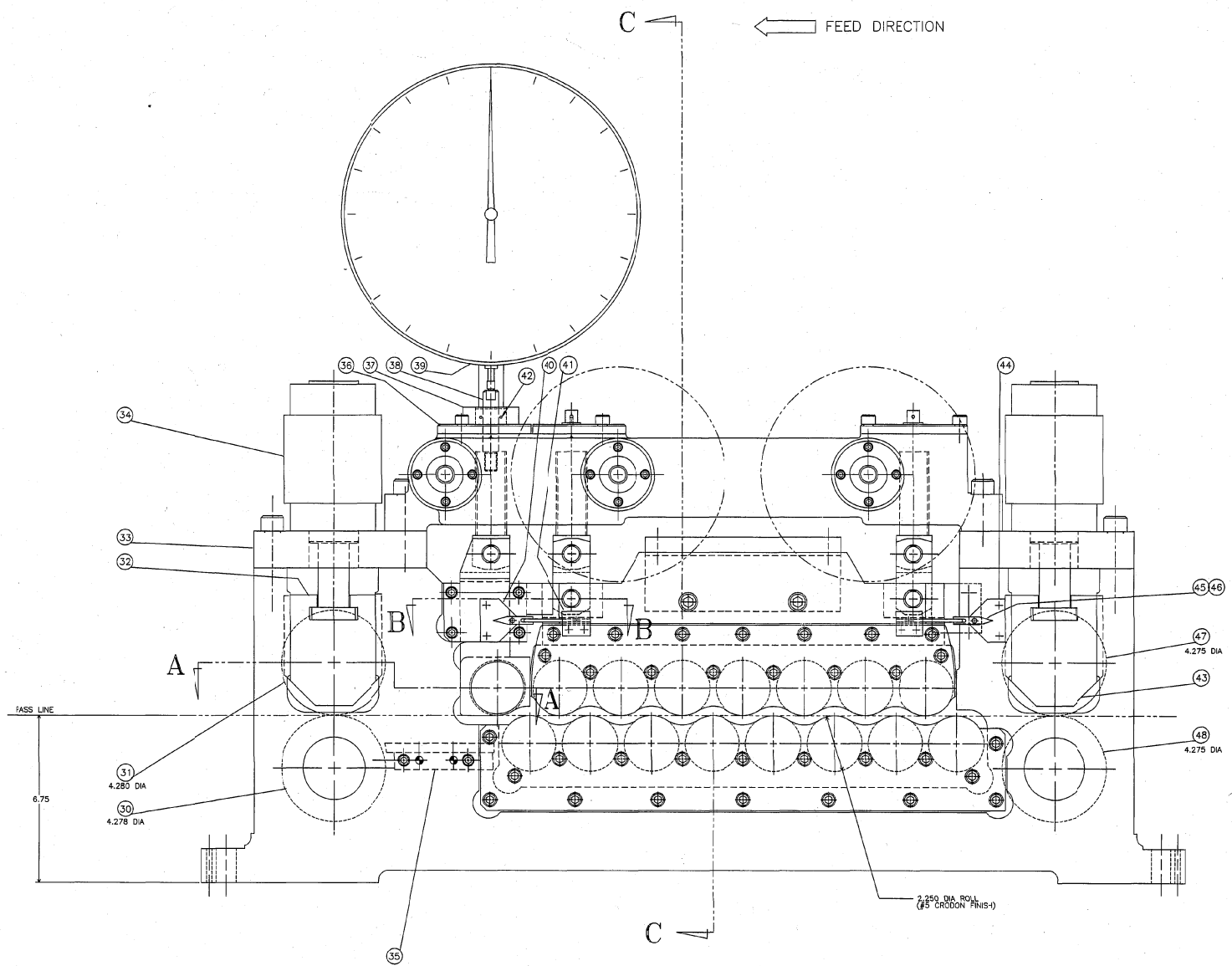


PLUNG LOCATION D-127860			
DATE	SYM	REV	BY
11-04-92	A	ADDED	NCN

(A) ENG. CROSS REF: D-273655 - 432-16PDS STRA.  
R-L METRIC 2-302950



DET NO	QTY	PART NO	DESCRIPTION	DRAW'G NO
48	1	126728	ASSY - ROLL - LOWER - ENTRY	C/049096
47	1	126733	ASSY - ROLL - UPPER ENTRY - RUBBER COVERED	-126732
46	2	034759	PIN - PIWOT	A-034759
45	2	034758	POINTER - INDICATOR	A-034758
44	1	049528	PLATE - INDICATOR DAL - R.H.	A-049528
43	2	104982	PLATE - PINCH ROLL GUARD	A-104982
42	1	091268	"O" RING "NATIONAL" #822712	
41	2	049094	BRACKET - POINTER PIN	A-049094
40	1	049527	PLATE - INDICATOR DAL - L.H.	A-049527
39	1	022453	DIAL INDICATOR	B-022453
38	1	024489	ROD - INDICATOR	A-024489
37	1	024432	BRACKET - INDICATOR	C-024432
36	1	022444	COVER - BRG - SPECIAL	B-022444
35	1	126726	DEFLECTOR - STOCK	B-024502
34	4	017275	CYL - AIR "ORTMAN-MILLER" MOD F	B-017275
33	4	024500	MOUNT - CYLINDER	B-024500
32	4	049097	BOX - BRG - UPPER ROLL	B-049097
31	1	126732	ASSY - ROLL - UPPER EXIT - RUBBER COVERED	C-126732
30	1	135943	ASSY - ROLL - LOWER EXIT	C-135943
29	1	049098	RET - REAR BRG BOX	A-049098
28	1	049091	RET - FRONT BRG BOX	A-049091
27	1	049093	RET - REAR BRG BOX - OVERSHOT ROLL	A-049093
26	1	049089	SPACER - OVERSHOT ROLL	A-049089
25	1	049092	BOX - BRG - OVERSHOT ROLL - REAR	B-049092
24	1	049090	BOX - BRG - OVERSHOT ROLL - FRONT	B-049090
23	1	091961	BUTTON - PLUG "DOT" #SS-50890	
22	8	091472	BRG - BALL "N.D." #295507	
21	2	092412	BUTTON - PLUG "CARR FASTENER" #SS-51111	
20	3	037555	SHAFT - ADJ - 37.50 LG	B-041949
19	6	017225	SLEEVE - COUPLING	A-017225
18	2	033992	WHEEL - HAND	B-033992
17	2	090424	HANDLE - "CINCONATI" #QA-3	
16	1	126725	BRIDGE - SIDE FRAME	D-024471
15	2	049084	SUPPORT - UPPER BRG BOX	C-049084
14	32	090269	BRG - BALL "N.D." #295505	
13	32	091270	RING - RET "WALDES" #5100-98	
12	15	049088	SPACER - STRA ROLL	A-049088
11	16	126724	ROLL - STRAIGHTENER	B-049087
10	1	049086	PLATE - UPPER BRG BOX - REAR	C-049086
9	1	049080	PLATE - UPPER BRG BOX - FRONT	C-049080
8	1	049083	PLATE - LOWER BRG BOX - REAR	C-049083
7	1	049078	PLATE - LOWER BRG BOX - FRONT	C-049078
6	1	049085	BOX - BRG - UPPER - REAR	C-049085
5	1	049079	BOX - BRG - LOWER - FRONT	C-049079
4	1	049082	BOX - BRG - LOWER - REAR	C-049082
3	1	049077	BOX - BRG - LOWER - FRONT	C-049077
2	1	049081	FRAME - MAIN - REAR	D-049081
1	1	049076	FRAME - MAIN - FRONT	D-049076

PARTS LIST

UNLESS OTHERWISE SPECIFIED FINISHED SURFACES HAVE: 125 MICRO INCH FINISH

UNLESS OTHERWISE SPECIFIED TOLERANCES ARE:  
 X .XX .XX  
 X.XX .XX  
 X.XXX .001"  
 X.XXXX .0005"

ANGLES OF 90° UNLESS SHARP CORNERS OR UNLESS OTHERWISE SPECIFIED

APPROX ALL DIMENSIONS UNLESS OTHERWISE SPECIFIED. THIS DOCUMENT CONTAINS UNPUBLISHED CONFIDENTIAL AND PROPRIETARY INFORMATION OF LITTELL. NO REPRODUCTION OR DISSEMINATION OF THIS DOCUMENT OR ANY PORTION OF THESE MATERIALS MAY BE MADE WITHOUT THE EXPRESS WRITTEN CONSENT OF LITTELL. UNLESS OTHERWISE SPECIFIED BY LITTELL.

CHKD [08-21-92] TAD  
 DRN [08-22-92] CRR  
 DES: [ ]

DATE: [ ] NAME: [ ]  
 VERSON INTERNATIONAL GROUP INC.

TITLE: LAYOUT - STRAIGHTENER HEAD PART NO. [ ]  
 MACHINE #442-16 STRA MACHINE D-127860

ORIG. NO. 82731-76 | SHT 1 OF 2 | SCALE 50:10

**LITTELL**