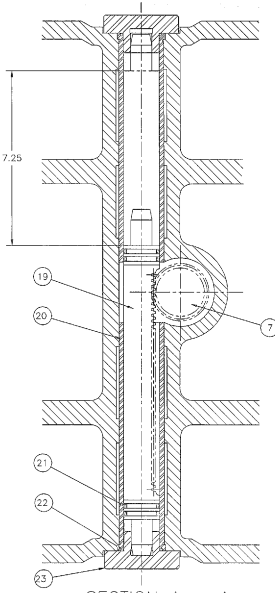
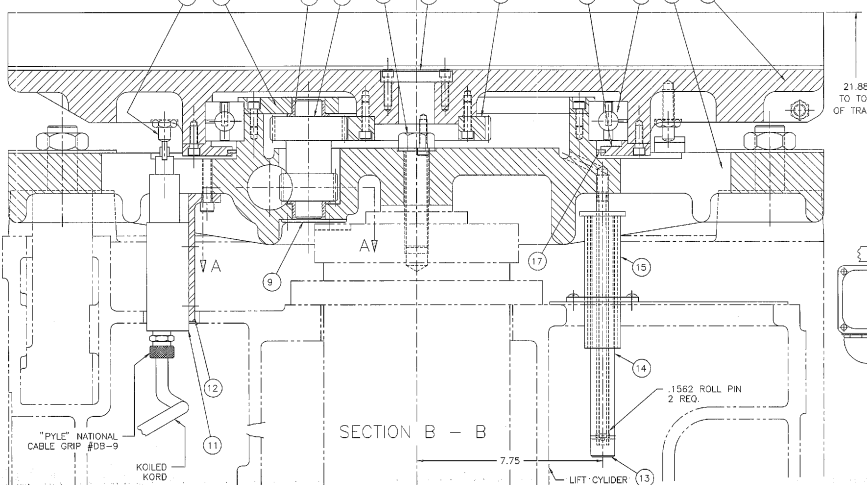


MAX. STROKE SHOWN 7.25  
OPER. STROKE 7.12

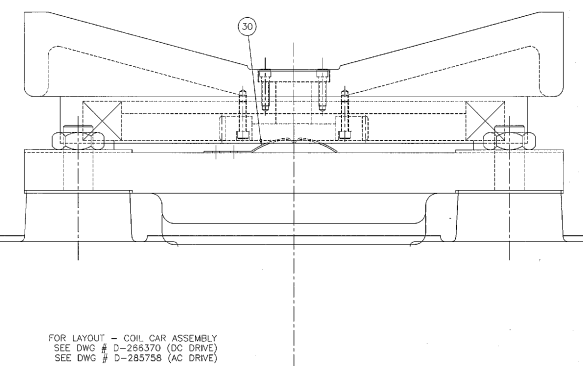


SECTION A - A

ITEM	QTY	DESCRIPTION	PART NO.	DRW. NO.	MATERIAL
30	1	POSITION LATCH	A-040902		
29	1	"VICKERS" RELIEF VALVE	A-028416		
28	1	STEEL WASHER	A-040059		
27	1	BLOCK VALVE	B-028487		
26	1	SCREW "MAX AIR"	K-092001		
25	1	COVER - SCREW ACCESS	A-026427		
24	1	POSITION LATCH	A-040902		
23	2	COVER - HYD. CYLINDER	A-026431		
22	2	"O"RING - "PARKER" #2-128	K-092553		
21	2	"O"RING - "PARKER" #2-128	K-093364		
20	2	SLEEVE - CYLINDER	B-029583		
19	1	PISTON WITH RACK	B-026426		
18	2	BUTTON "MONROE" #BR-506	K-091387		
17	1	WICKING - FELT STRIP	K-093257		
16	2	BRACKET - ADJ. STOP	B-073693		
15	1	TUBING - GUIDE	A-028464		
14	1	TUBING	A-086097		
13	1	PIPE DRAIN	A-086098		
12	1	BRACKET - MTG. "MICROSWITCH"	A-028866		
11	1	SWITCH "MICROSWITCH" #5ML7	A-246774		
10	2	SWITCH DOG "A-B" SWITCH #802T-DP	603020		
9	1	CAP - PINION	A-028463		
8	2	BUSHING "OILITE" #FF-1314-1	K-091330		
7	1	CLUSTER GEAR	B-026424		
6	1	GEAR - SADDLE DRIVE	B-026426		
5	1	RETAINER - BRG. SADDLE SUP.	C-026057		
4	1	RETAINER - BEARING SADDLE	C-026423		
3	1	BEARING "KAYDON" #B-5073-1	K-091331	B-242070	
2	1	SADDLE - SUPPORT	D-051501		
1	1	SADDLE WITHOUT NARROW COIL SUPP	D-051502		
		WITH NARROW COIL SUPP	D-238503		



SECTION B - B



FOR LAYOUT - COIL CAR ASSEMBLY  
SEE DWG # D-285370 (DC DRIVE)  
SEE DWG # D-285798 (AC DRIVE)

UNLESS OTHERWISE SPECIFIED		CONTRACT NUMBER		DATE		DRAWN BY		CHECKED BY		APPROVED BY	
FINISH	AS SHOWN	DWG NO.	D-029079	DATE	10-28-62	DESIGNER	W. J. O'NEILL	DATE	10-28-62	DRW. NO.	D-029079
TOLERANCES	AS SHOWN	DATE	10-28-62	DATE	10-28-62	DRW. NO.	D-029079	DATE	10-28-62	DRW. NO.	D-029079
FRACTIONS	AS SHOWN	DATE	10-28-62	DATE	10-28-62	DRW. NO.	D-029079	DATE	10-28-62	DRW. NO.	D-029079
DECIMALS	AS SHOWN	DATE	10-28-62	DATE	10-28-62	DRW. NO.	D-029079	DATE	10-28-62	DRW. NO.	D-029079
ANGLES	AS SHOWN	DATE	10-28-62	DATE	10-28-62	DRW. NO.	D-029079	DATE	10-28-62	DRW. NO.	D-029079
THREADS	AS SHOWN	DATE	10-28-62	DATE	10-28-62	DRW. NO.	D-029079	DATE	10-28-62	DRW. NO.	D-029079
WELDING	AS SHOWN	DATE	10-28-62	DATE	10-28-62	DRW. NO.	D-029079	DATE	10-28-62	DRW. NO.	D-029079
SCALE	AS SHOWN	DATE	10-28-62	DATE	10-28-62	DRW. NO.	D-029079	DATE	10-28-62	DRW. NO.	D-029079

UNLESS OTHERWISE SPECIFIED  
DIMENSIONS ARE IN INCHES  
TOLERANCES ARE AS SHOWN  
FRACTIONS ARE TO BE SHOWN  
DECIMALS ARE TO BE SHOWN  
ANGLES ARE TO BE SHOWN  
THREADS ARE TO BE SHOWN  
WELDING IS TO BE SHOWN  
SCALE IS TO BE SHOWN

SCALE: 3/4"=1'-0"