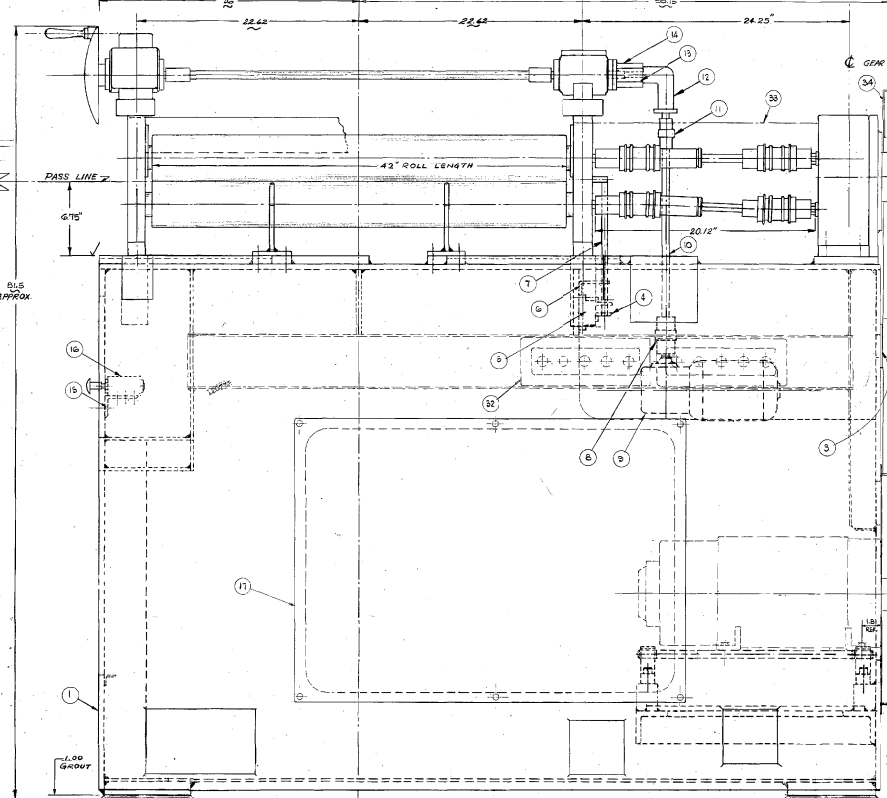
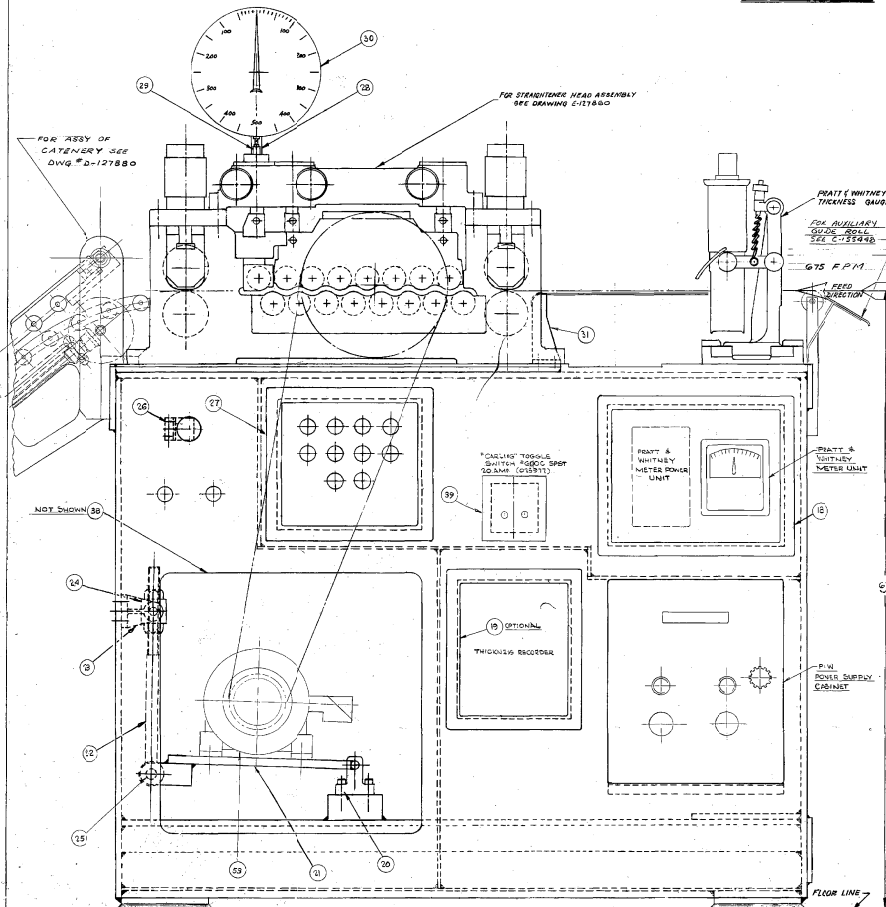


ITEM	DESCRIPTION	QTY
E12788	ASSY - DRIVE	1
30 100000	ROLLERS - DRIVE - UNIDIRAL #30-18 IN 35 TYPE AIF WITH 60° BEAM - STAYE SC LATE DIA. BONE 1921155	1
31 100000	ROLLERS - DRIVE - UNIDIRAL #31-18 IN 35-T VRE CDF WITH 60° BEAM - STAYE SC LATE DIA. BONE 1921155	1
32 100000	DELT TIMING - UNIDIRAL #32-18 IN 35 (20X2 PL) HUBER 1.617 0.670 0.017	1
33 100000	WHEEL - 6.17 0.670 0.017 35V - 250/1000 RPM - COILING # 03010 AT	1
1 E138437	BASE - STRAIGHTENER	1
34 C140277	GUARD - BELT	1



ITEM	DESCRIPTION	QTY
E12786	ASSY - DRIVE	1
D039200	LAYOUT - GEAR BOX	1
D073740	LAYOUT - STRAIGHTENER HEAD	1
D022442	LAYOUT - ADS - STORAGE	1
33 A141619	PLATE - TOGGLE SWITCH	1
38 A 046947	PLATE - COVER (B-026151)	1
37 B133947	COUPLING TAPE - LOWER PINN	1
30 B133949	COUPLING TAPE - DRIVE	16
35 B133946	COUPLING TAPE - PINN ROLL	3
33 D34818	GUARD - COUPLING	1
32 A 82167	PLATE - COVER (SIC TROUGH)	1
31 B18090	BRACKET - WIRE BRIDGE LH	2
30 B21453	INDICATOR - AMPS #124 SPECIAL	1
29 A021490	PIN - INDICATOR	1
28 C044393	BRACKET - INDICATOR	1
27 D378193	PANEL - CENTER	1
26 N 026100	BRACKET - PRESSURE GAUGE	1
25 A187476	PIN	1
24 A130798	BLOCK - PIVOT	1
23 N140038	BRACKET - ADJ. 100 (A-114501)	2
22 X024438	SOG - ADJUSTING (A-091416)	1
21 C140823	PLATFORM - MOTOR	1
20 N380048	BRACKET - PIVOT	2
19 X161044	PLATE - COVER (S-046150)	1
18 C209012	PANEL - ELECTRICAL	1
17 X021151	COVER - SIDE (S016148)	2
16 C09140	VALVE - HUNT VALVE CO-0031-14	1
15 N378193	BRACKET - AIR VALVE	1
14 B221801	GUIDE - LATCH	1
13 A124456	COUPLING	1
12 C01267	DRIVE UNIT - ANGLE GEAR #310	1
11 C01766	COUPLING - BGM #FC08-15	1
10 A124018	SHAFT - 11.5 LB	1
9 090935	GEARMOTOR - 1/2 HP 20V	1
8 C02690	BRACKET - TIGHTENING	1
7 X024438	SOG - SWITCH	1
6 B124487	BRACKET - GUIDE	1
5 C02667	LIMIT SWITCH - 50 D 1800-AN-01	1
4 A014793	CAM - SWITCH	2
3 A124370	COVER - WIRE CHANNEL	1
2 W187166	SOFT-TERMINAL & COVER (B-097240)	1
1 X024438	BASE - STRAIGHTENER (A1401)	1



ITEM	DESCRIPTION	QTY
1	TERMINAL 2019 ABOVE FLOOR LINE IN SECTION OF BOX	1