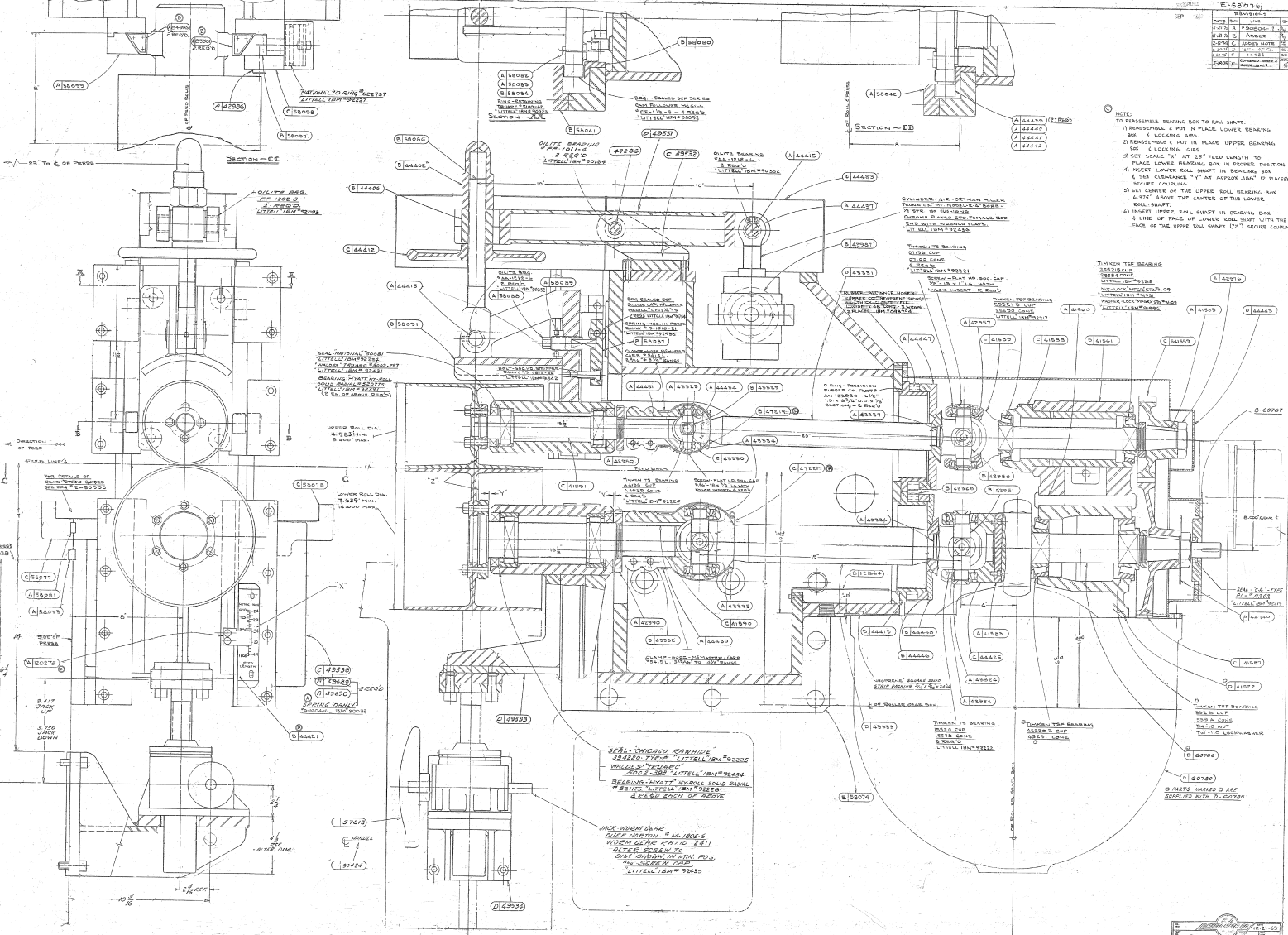


REV	BY	CHK	DATE	REVISION
1
2
3
4
5
6
7
8
9
10
11
12
13
14
15
16
17
18
19
20
21
22
23
24
25
26
27
28
29
30



NOTE:
 1) REASSEMBLE BEARING BOX TO ROLL SHAFT.
 2) REASSEMBLE & PUT IN PLACE LOWER BEARING BOX & LOWER ROLLER.
 3) REASSEMBLE & PUT IN PLACE UPPER BEARING BOX & LOWER ROLLER.
 4) SET CLEARANCE "Y" AT APPROX 1/16" & PLACE BEARING HOUSING.
 5) SET CENTER OF THE UPPER ROLL BEARING BOX & SET ABOVE THE CENTER OF THE LOWER ROLL SHAFT.
 6) LINE UP FACE OF LOWER ROLL SHAFT WITH THE FACE OF THE UPPER ROLL SHAFT (27) BEARING HOUSING

CONVERTER AIR SYSTEM HOUSING
 PREVENTION OF DEBRIS FROM
 BEING DRAWN INTO THE HOUSING
 THROUGH THE AIR INLET HOLES
 THROUGH THE AIR INLET HOLES
 THROUGH THE AIR INLET HOLES
 THROUGH THE AIR INLET HOLES

SEAL ON LOWER ROLLER SIDE OF THE BEARING HOUSING IS TO BE PLACED IN THE MIDDLE OF THE BEARING HOUSING AND NOT AT THE END OF THE BEARING HOUSING.
 SEAL ON LOWER ROLLER SIDE OF THE BEARING HOUSING IS TO BE PLACED IN THE MIDDLE OF THE BEARING HOUSING AND NOT AT THE END OF THE BEARING HOUSING.
 SEAL ON LOWER ROLLER SIDE OF THE BEARING HOUSING IS TO BE PLACED IN THE MIDDLE OF THE BEARING HOUSING AND NOT AT THE END OF THE BEARING HOUSING.

REV	BY	CHK	DATE	REVISION
1
2
3
4
5
6
7
8
9
10
11
12
13
14
15
16
17
18
19
20
21
22
23
24
25
26
27
28
29
30