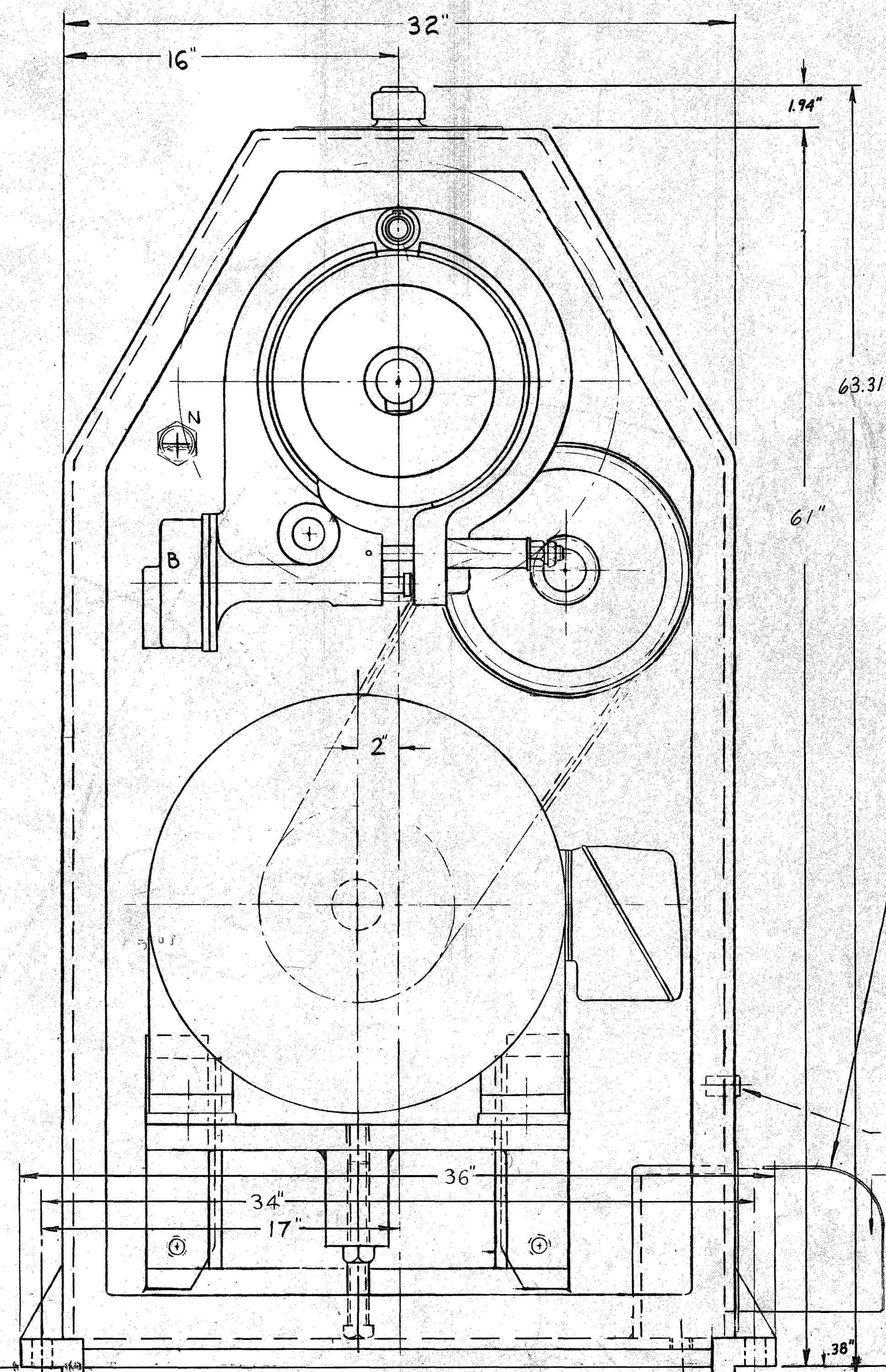
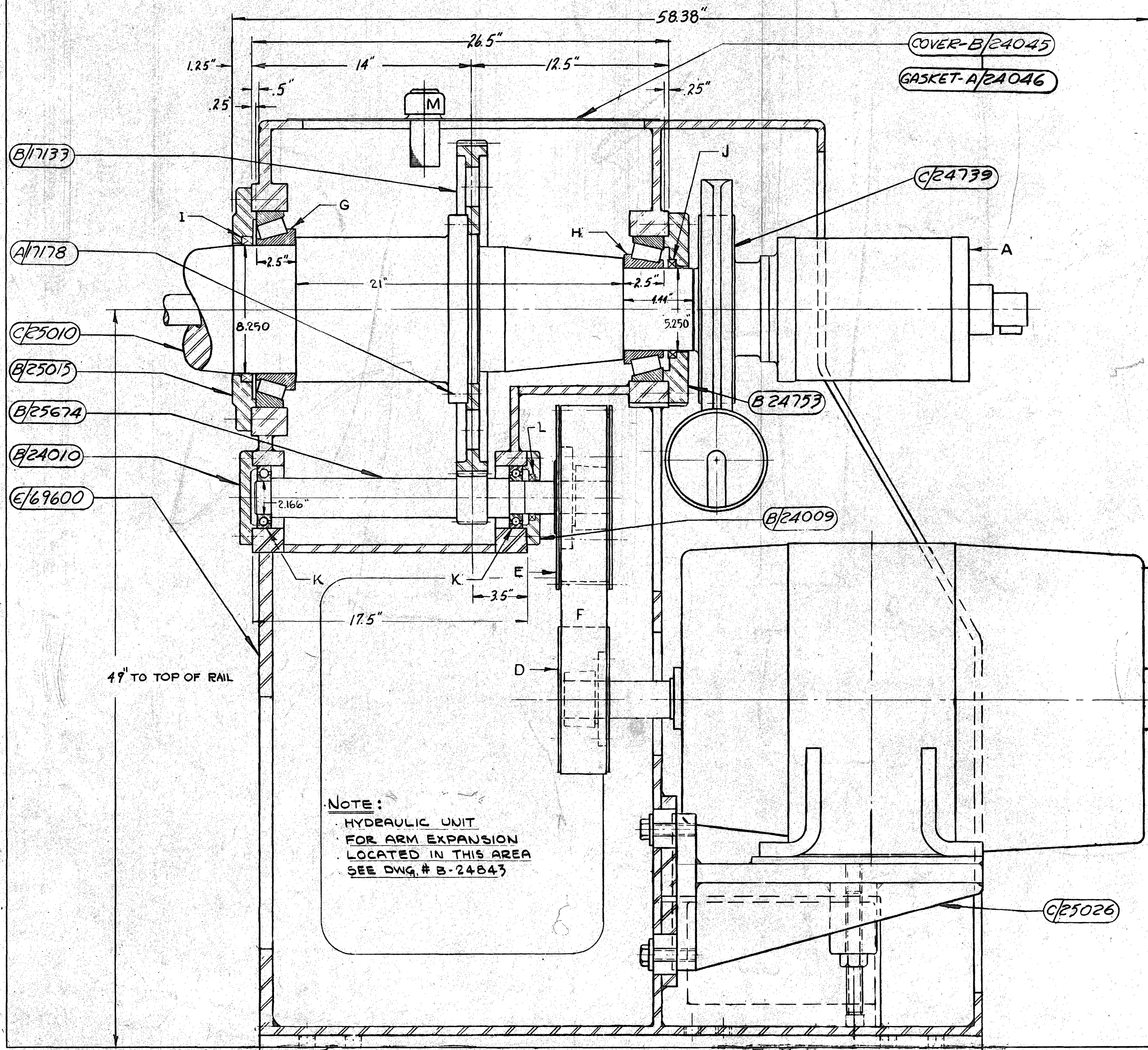
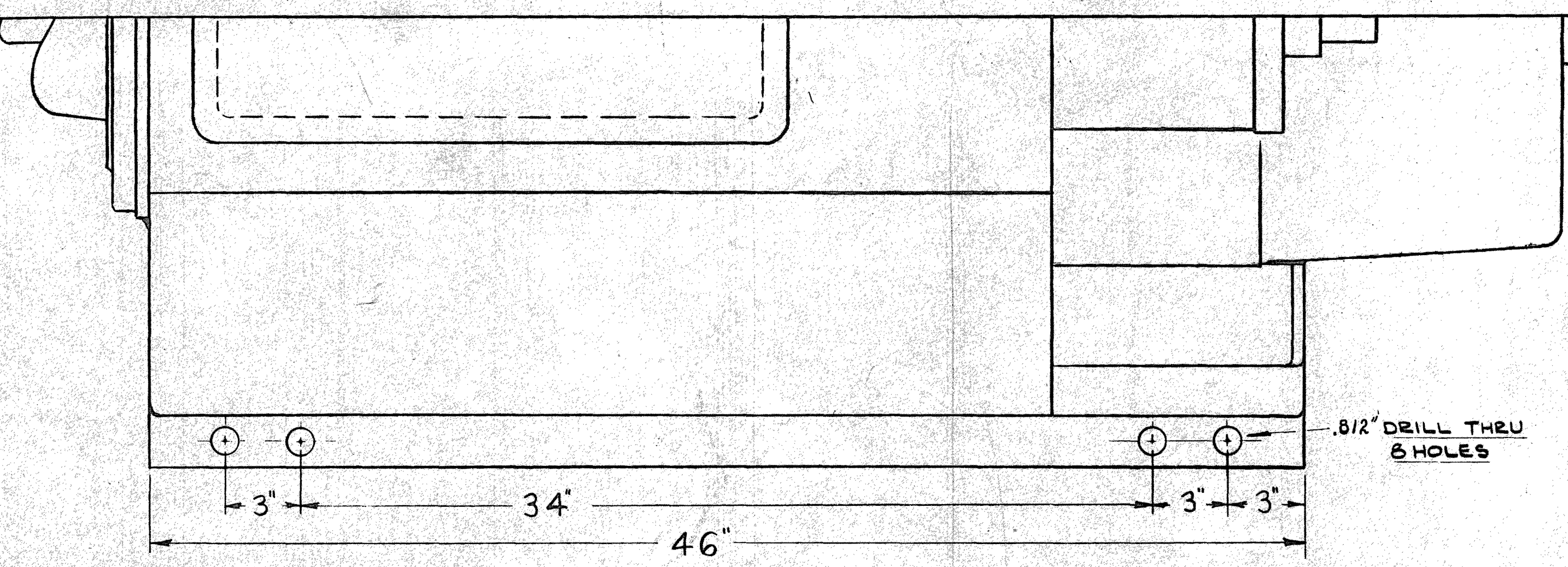


| MICROFILMED | | REVISIONS | |
|-------------|----|-----------|-----|
| DATE | BY | NO. | BY |
| JUL 1952 | A | 1 | LHE |

LIST OF COMMERCIAL PARTS

- A- "S-P" ROTATING HYDRAULIC CYLINDER, 8" BORE, 7" STROKE
- B- "FAWICK" TYPE CS BRAKE ELEMENT, SIZE #12CS 200
- C- "GENERAL ELECTRIC" 5 HP D.C. MOTOR, 1200-300 RPM, FRAME #CD-404
- D- "U.S. RUBBER" SPECIAL DRIVE PULLEY #34 XH 300
- E- "U.S. RUBBER" DRIVEN PULLEY #40 XH 300
- F- "U.S. RUBBER" TIMING BELT #700 XH 300 3/8" PITCH, 3" WIDE
- G- "TIMKEN" CONE #93B25A & CUP #93125
- H- "TIMKEN" CONE #95525 & CUP #95925
- I- "CHICAGO RAWHIDE" OIL SEAL #95011M588
- J- "CHICAGO RAWHIDE" OIL SEAL #G2558-M1
- K- "FAFNIR" BRG. #211W, 2 REQ.
- L- "GARLOCK KLOZURE" #G3X 1360 (A)
- M- "VICKERS" FILLER CAP #SP-113-B
- N- "GIT'S" SIGHT GAUGE #4045 - 1 1/2" P.I.



KEY
 DRG No. OR SIZE / PART No.

| | |
|--------------------------|----------------|
| DATE 4-4-68 | |
| SCALE 1/4" = 1" | |
| DWN BY D.A.G. | |
| CHK BY E.S.P. | |
| TITLE ASSY- BASE & DRIVE | |
| MACHINE # S 250 REEL | |
| ORIGINAL ORDER NUMBER | DWG. NO. 70700 |