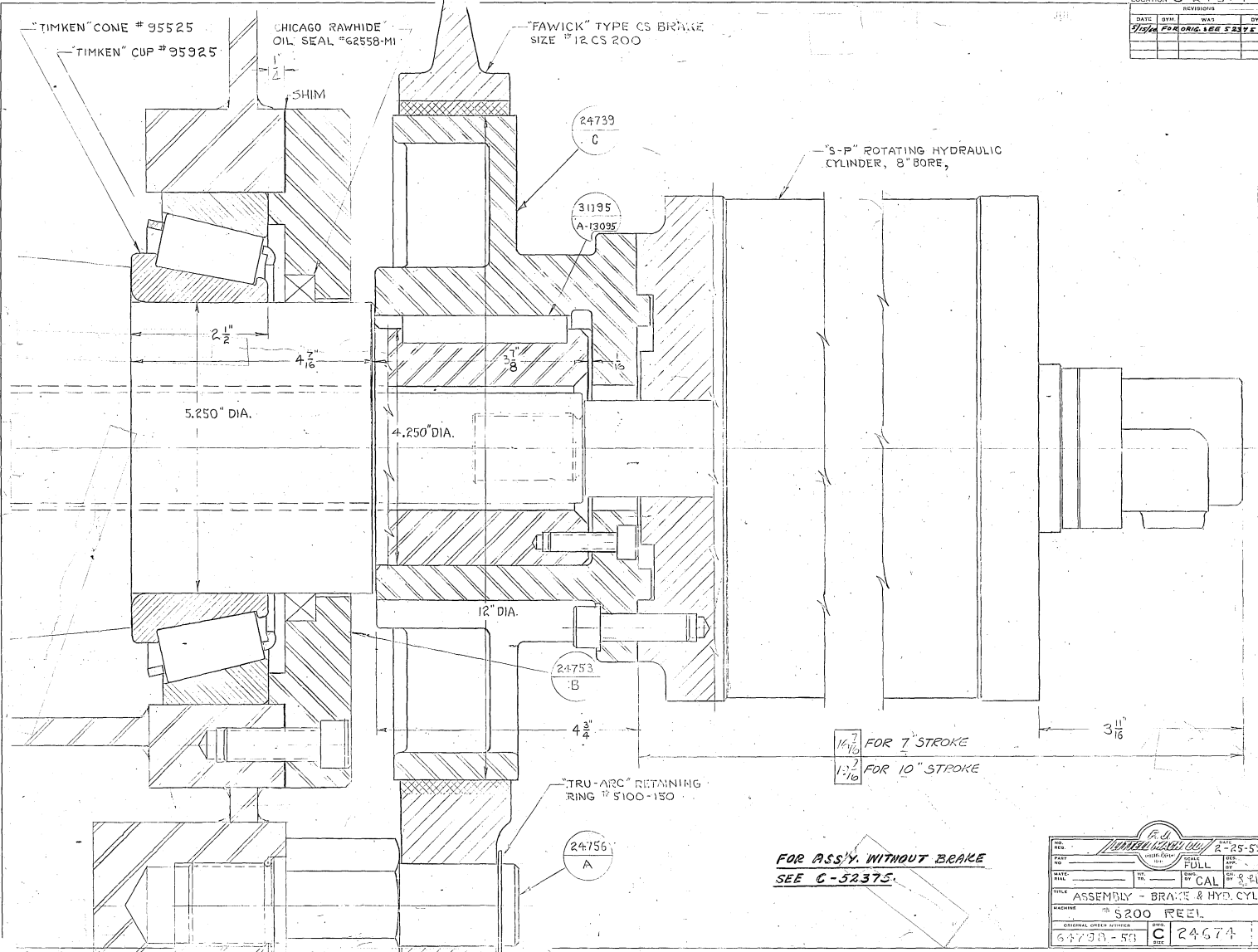


DRAWING LOCATION		C-24574	
REVISIONS			
DATE	BY	WAS	BY
FOR ORIGINAL DRAWING			



"TIMKEN" CONE # 95525

"TIMKEN" CUP # 95925

CHICAGO RAWHIDE OIL SEAL #62558-M1

SHIM

"FAWICK" TYPE CS BRAKE SIZE #12 CS 200

"S-P" ROTATING HYDRAULIC CYLINDER, 8" BORE,

24739
C

31195
A-13095

2 1/2"

4 7/16"

5.250" DIA.

4.250" DIA.

3 1/8"

1/8"

12" DIA.

24753
B

4 3/4"

1 1/16" FOR 7" STROKE

1 1/16" FOR 10" STROKE

3 1/8"

"TRU-ARC" RETAINING RING # 5100-130

24756
A

FOR ASS'Y WITHOUT BRAKE
SEE C-52375

REV. NO.		F. J. HUNTER MACH. CO.		245-59	
PART NO.		SCALE		REV.	
		FULL		BY	
DATE	BY	REV.	BY	DATE	BY
TITLE					
ASSEMBLY - BRAKE & HYD. CYL.					
MACHINE					
# 5200 REEL					
ORIGINAL ORDER NUMBER		C		24674	
64730-59					