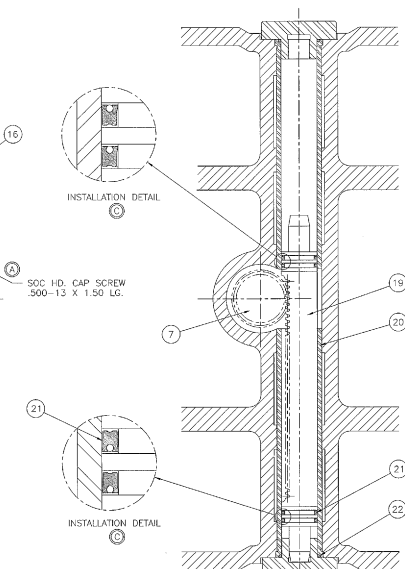
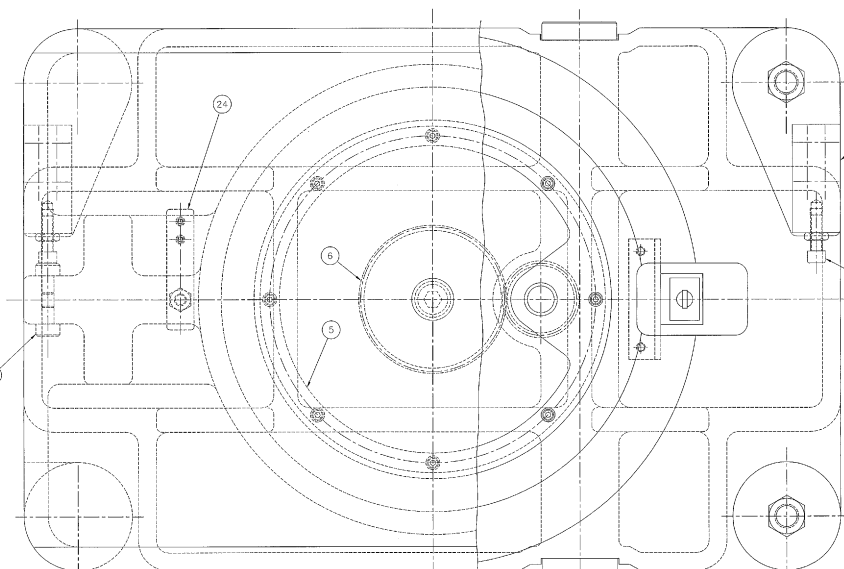
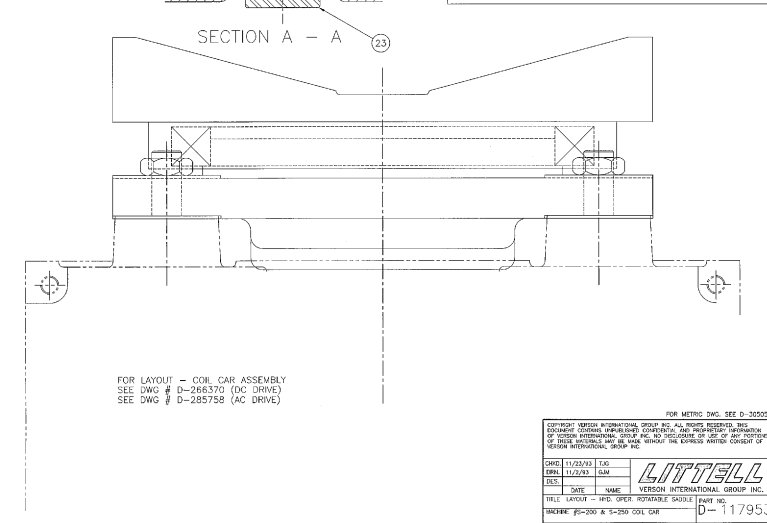
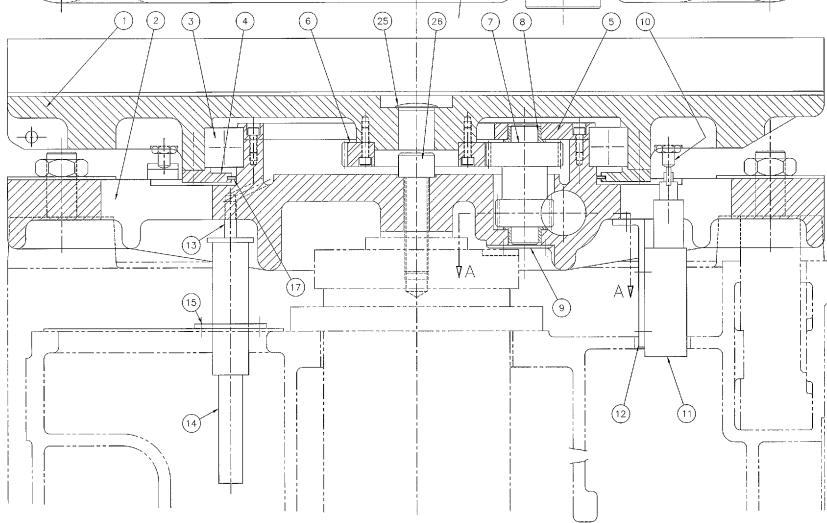


REVISION D-117953			
DATE	SYM	BY	BY
5/12/85	A	A-2644	WD/AR
12/22/85	A	NUMBER 42-718	LOG
10/29/86	C	SETUP 40505	GM
11/20/81	D	ADDED 238803	INCH
02/11/83	E	1/2 IN. A-008427	BR/MP



26	1	SCREW "MAX AR"	K-092001	
25	1	BUTTON - PLUG KEMSTER-CARR #506003	K-318130	
24	1	POSITION LATCH	A-049002	
23	2	COVER - HYD. CYLINDER	A-026431	
22	2	O RING "NATIONAL" #610082	K-092553	
21	4	SEAL "DARKER" POLYPAK #125012500	K-095364	
20	2	SLEEVE - CYLINDER	B-029583	
19	1	PISTON WITH RACK	B-026425	
18	2	WICKING "MONROE" #BR-506	K-091387	
17	1	BUTTON - FELT STRIP	K-093257	
16	2	BRACKET - ADJ. STOP	B-073693	
15	1	TUBING - GUIDE	A-029464	
14	1	TUBING	A-086087	
13	1	PIPE DRAIN	A-086088	
12	1	BRACKET - MTC. "MICROSWITCH"	A-026805	
		"A-B" SWITCH	A-246774	
		"MICROSWITCH" #5ML7	K-091647	
11	1	SWITCH "A-B" SWITCH #602T-DP	603020	
10	2	SWITCH DOG	A-026433	
9	1	CAP - PINION	A-029463	
8	2	BUSHING "OILITE" #FF-1314-1	K-091330	
7	1	CLUSTER GEAR	B-026424	
6	1	GEAR - SADDLE DRIVE	B-026426	
5	1	RETAINER - BRG. SADDLE SUPP.	C-026057	
4	1	RETAINER - BEARING SADDLE	C-026423	
3	1	BEARING "KAYDON" #B-5073-1	K-091331	B-242070
2	1	SADDLE - SUPPORT	D-051501	
1	1	SADDLE WITHOUT NARROW COIL SUPP	D-051902	
		WITH NARROW COIL SUPP	D-239803	



FOR LAYOUT - COIL CAR ASSEMBLY  
SEE DWG # D-286370 (DC DRIVE)  
SEE DWG # D-285758 (AC DRIVE)

FOR METRIC DWG. SEE D-305056

REVISIONS AND MODIFICATIONS SHOULD BE AS NOTED HEREON. THIS DOCUMENT CONTAINS UNCLASSIFIED INFORMATION. ANY INFORMATION CONTAINED HEREIN IS UNCLASSIFIED EXCEPT WHERE SHOWN OTHERWISE. DATE AND REASON FOR DECLASSIFICATION IS CONTAINED IN THE APPROPRIATE SECTION OF THE DOCUMENT. GROUP INC.

DATE	BY	REASON
11/23/93	EG	
11/22/93	GM	

DATE: 11/23/93  
BY: EG  
REASON: REVISIONS TO DRAWING

TRUCKS #2-200 & 54-250 COIL CAR  
D-117953

DRG. NO. 00000-XX | SHT 1 OF 1 | SCALE: 50:1=1.00