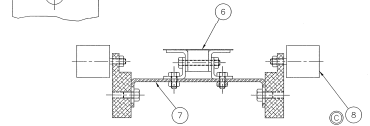
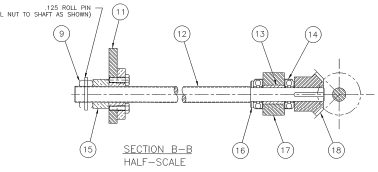


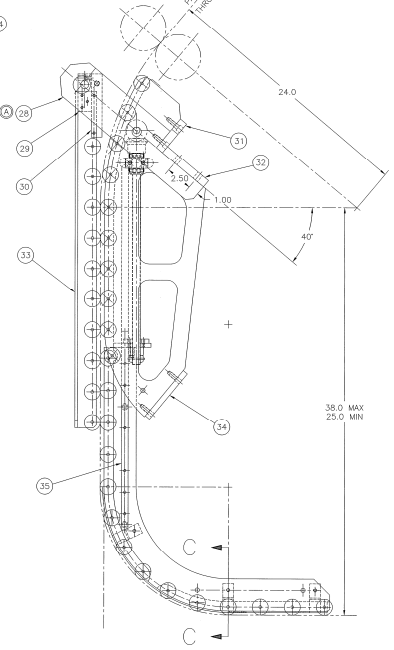
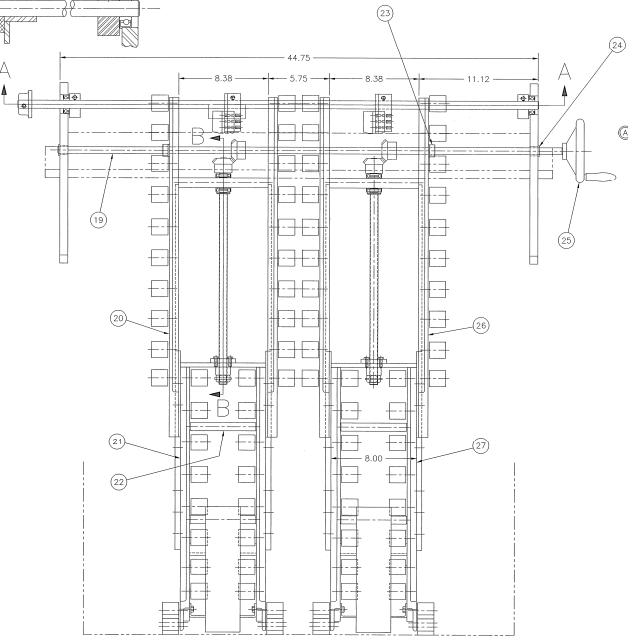
SECTION A-A
HALF-SCALE



SECTION C-C
HALF-SCALE



SECTION B-B
HALF-SCALE



35	4	122158	KEY-GUIDE	B-122158
34	1	119946	PLATE-MOUNTING-FRAME	B-107756
33	2	108536	ARM-CONTROL	C-108536
32	1	127863	PLATE-MOUNTING-VERTICAL	B-127863
31	1	127862	PLATE-MOUNTING-HORIZONTAL	B-127862
30	2	108537	DEFLECTOR-STOCK	A-108537
29	2	074428	CLAMP-CONTROL ARM	A-074428
28	2	161851	PLATE-CATENARY SIDE, METRIC	B-104172
27	2	119941	ARM-CATENARY L.H. STD.	C-119941
26	2	119943	FRAME-CATENARY L.H.	C-119943
25	1	092472	HANDWHEEL W/ROTATING HANDLE	
24	6	092148	"DOLITE" BUSHING #PT-843	
23	2	090149	"HOLLOWELL" COLLAR .625 I.D. x 1.12 O.D. x .50	B-111992
22	8	111992	SHAFT-TIE	B-111992
21	2	119942	ARM-CATENARY R.H. STD.	C-119942
20	2	119944	FRAME-CATENARY R.H.	C-119944
19	1	127857	SHAFT-ADJUSTING	B-074432
18	4	092770	*ROW MITER GEAR #PLK129Y	A-074427
17	2	074427	BLOCK-ADJ. SCREW BEARING	A-074427
16	2	034584	STEEL WASHERS	B-034600
15	2	074414	NUT-CATENARY ADJ.	A-074414
14	4	092789	"NICE" THRUST BEARING #206	
13	2	090342	"DOLITE" BUSHING #AA-532-1	
12	2	122159	SCREW-CATENARY ADJ.	B-074411
11	2	119937	PLATE-ADJ. NUT CATENARY	B-119937
10				
9	2	222261	NUT, HEX, FULL STL FIN, LH 750-16	
8	136	287204	ROLL "FARLANE" #RR-215-60	
7	4	119949	BRACKET-MAGNETIC BAR	A-119949
6	2	119951	"BOUNDING" CURVED MAGNETIC BAR	B-119951
5	1	090567	"SQUARE D" LIMIT SWITCH #R007-AW12-CAI	
4	2	090728	"NICE" BEARING #5991	
3	2	074428	CLAMP-STOP	A-074428
2	1	127861	SHAFT-75 DIA	B-032116
1	1	083608	CAM	A-083608

DET	QTY	PART NO	DESCRIPTION	DWG NO
PARTS LIST				

SEE
FOR METRIC SEE D-303160
FOR 54.0" WIDE SEE D-266230

DESIGNED BY		CHECKED BY		DATE	
DRAWN BY		SCALE		SHEET NO.	
APPROVED BY		DATE		JOB NO.	
PROJECT NAME		DRAWING NO.		REV.	

LITTELL
VERSON INTERNATIONAL GROUP INC.
FORM D-127880