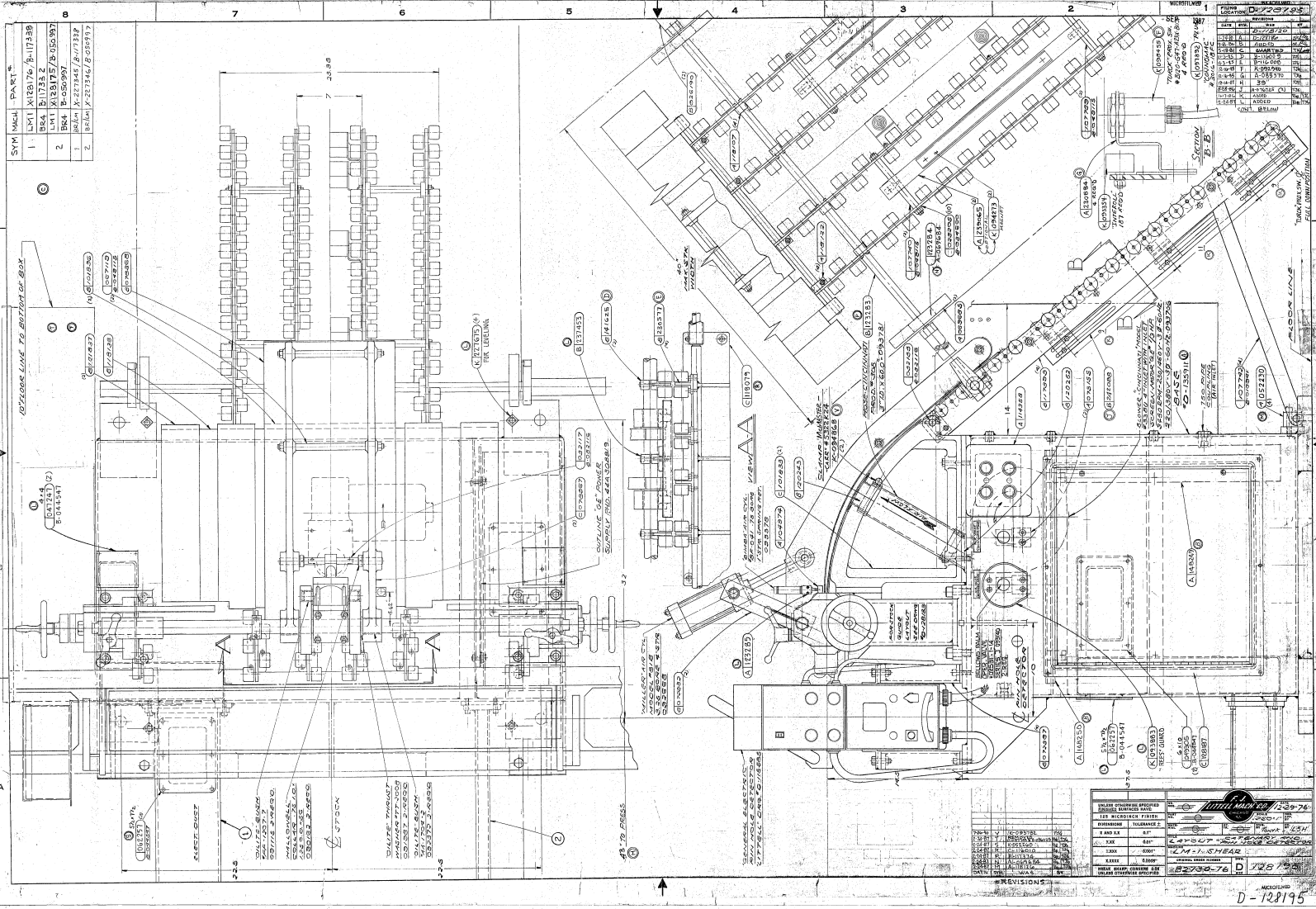


SYM	Weld	PART
1	LW1	Weld 76 1/2-117338
2	BCL	B 1733 Z / B 555331
3	BCL	B 552307
4	BCL	B 227446 / B 771337
5	BCL	B 227446 / B 255337

OUTLINE LINE TO RIGHT OF BOX



NO.	REV.	DESCRIPTION	BY	CHKD.	DATE
1	1	AS SHOWN			
2	1	REVISION			
3	1	REVISION			
4	1	REVISION			
5	1	REVISION			
6	1	REVISION			
7	1	REVISION			
8	1	REVISION			
9	1	REVISION			
10	1	REVISION			
11	1	REVISION			
12	1	REVISION			
13	1	REVISION			
14	1	REVISION			
15	1	REVISION			
16	1	REVISION			
17	1	REVISION			
18	1	REVISION			
19	1	REVISION			
20	1	REVISION			
21	1	REVISION			
22	1	REVISION			
23	1	REVISION			
24	1	REVISION			
25	1	REVISION			
26	1	REVISION			
27	1	REVISION			
28	1	REVISION			
29	1	REVISION			
30	1	REVISION			

1	2	3	4	5	6	7	8	9	10	11	12	13	14	15	16	17	18	19	20	21	22	23	24	25	26	27	28	29	30
1	2	3	4	5	6	7	8	9	10	11	12	13	14	15	16	17	18	19	20	21	22	23	24	25	26	27	28	29	30

SHEAR CUTTING POWER
 1 1/2 HP
 2 1/2 HP
 3 1/2 HP
 4 1/2 HP
 5 1/2 HP
 6 1/2 HP
 7 1/2 HP
 8 1/2 HP
 9 1/2 HP
 10 1/2 HP
 11 1/2 HP
 12 1/2 HP
 13 1/2 HP
 14 1/2 HP
 15 1/2 HP
 16 1/2 HP
 17 1/2 HP
 18 1/2 HP
 19 1/2 HP
 20 1/2 HP
 21 1/2 HP
 22 1/2 HP
 23 1/2 HP
 24 1/2 HP
 25 1/2 HP
 26 1/2 HP
 27 1/2 HP
 28 1/2 HP
 29 1/2 HP
 30 1/2 HP

SHEAR CUTTING POWER
 1 1/2 HP
 2 1/2 HP
 3 1/2 HP
 4 1/2 HP
 5 1/2 HP
 6 1/2 HP
 7 1/2 HP
 8 1/2 HP
 9 1/2 HP
 10 1/2 HP
 11 1/2 HP
 12 1/2 HP
 13 1/2 HP
 14 1/2 HP
 15 1/2 HP
 16 1/2 HP
 17 1/2 HP
 18 1/2 HP
 19 1/2 HP
 20 1/2 HP
 21 1/2 HP
 22 1/2 HP
 23 1/2 HP
 24 1/2 HP
 25 1/2 HP
 26 1/2 HP
 27 1/2 HP
 28 1/2 HP
 29 1/2 HP
 30 1/2 HP

SHEAR CUTTING POWER
 1 1/2 HP
 2 1/2 HP
 3 1/2 HP
 4 1/2 HP
 5 1/2 HP
 6 1/2 HP
 7 1/2 HP
 8 1/2 HP
 9 1/2 HP
 10 1/2 HP
 11 1/2 HP
 12 1/2 HP
 13 1/2 HP
 14 1/2 HP
 15 1/2 HP
 16 1/2 HP
 17 1/2 HP
 18 1/2 HP
 19 1/2 HP
 20 1/2 HP
 21 1/2 HP
 22 1/2 HP
 23 1/2 HP
 24 1/2 HP
 25 1/2 HP
 26 1/2 HP
 27 1/2 HP
 28 1/2 HP
 29 1/2 HP
 30 1/2 HP

SHEAR CUTTING POWER
 1 1/2 HP
 2 1/2 HP
 3 1/2 HP
 4 1/2 HP
 5 1/2 HP
 6 1/2 HP
 7 1/2 HP
 8 1/2 HP
 9 1/2 HP
 10 1/2 HP
 11 1/2 HP
 12 1/2 HP
 13 1/2 HP
 14 1/2 HP
 15 1/2 HP
 16 1/2 HP
 17 1/2 HP
 18 1/2 HP
 19 1/2 HP
 20 1/2 HP
 21 1/2 HP
 22 1/2 HP
 23 1/2 HP
 24 1/2 HP
 25 1/2 HP
 26 1/2 HP
 27 1/2 HP
 28 1/2 HP
 29 1/2 HP
 30 1/2 HP