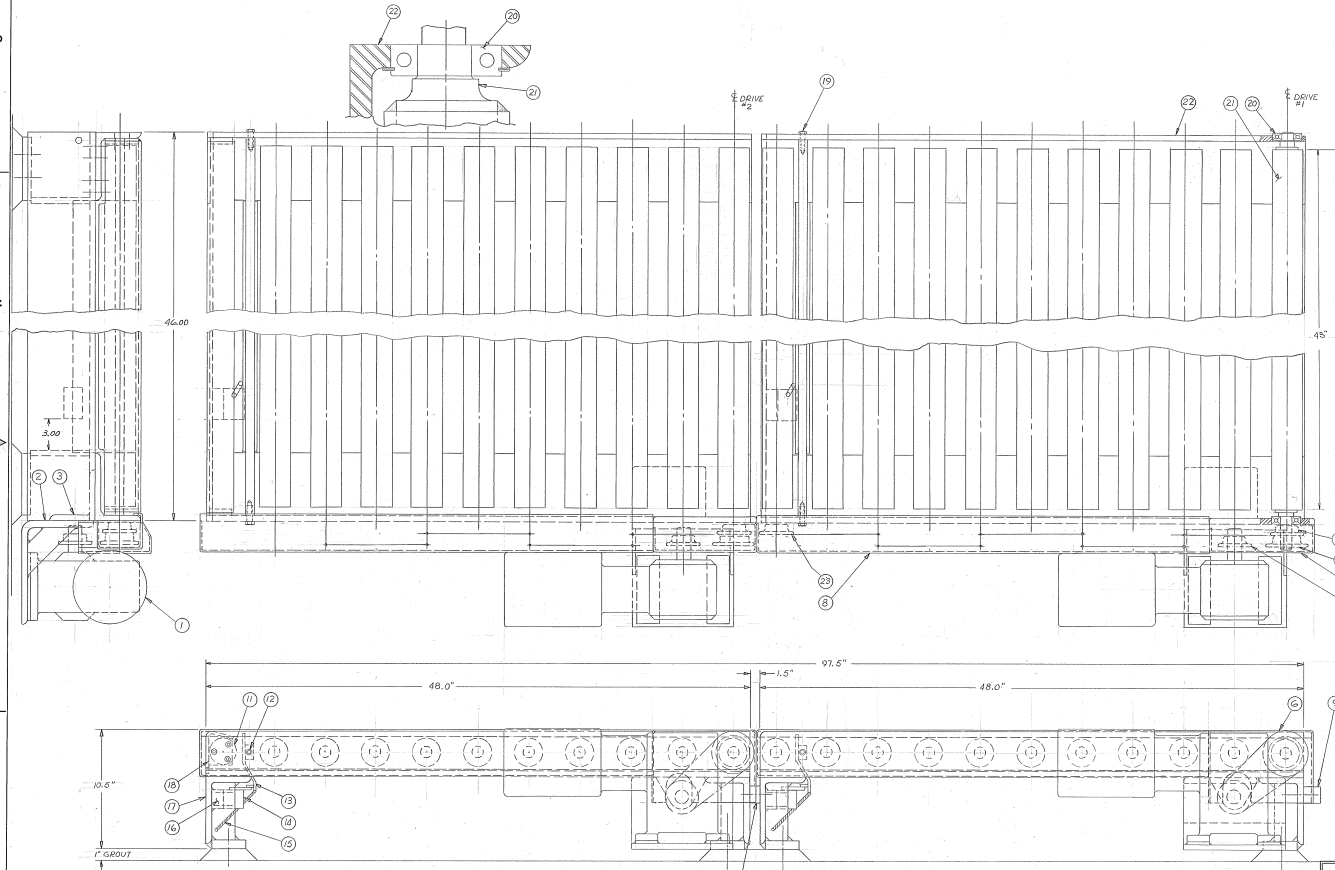


PLANS		SECTION		REVISION	
DATE	BY	NO.	BY	NO.	BY



23	SPROCKET-DRIVEN-MFRS STD 300R	000000	18
22	FRAME-SIDE-DISCHARGE CONV.	B133356	4
21	ASST-CONV ROLL	C-128003	21
20	BRG "N.D." #2-499506	093731	42
19	SCREW-SHOULDER		4
18	BRACKET-CONV. STOP	C-128006	2
17	BEAM-SUPPORT-DISCHARGE CONV.	B133357	4
16	PLATE-TAPPING-L.S.	B128026	2
15	SPRING-LITERM-LE "LLOOSE-10	000000	2
14	SH-LIM. 5/8" O' 9007 TIRE B-5462-CAI	093806	2
13	PLATE-SWING-(L.S.) CONV.	B-126784	2
12	BUSHING-"DILITE" PFF-620-1	091444	4
11	BLUE-CONV. STOP BRACKET	A-128009	4
10	SPACER-CONV. TO CONV.	X-188032	2
9	SPACER-CONV. TO STACKER	B-126783	2
8	GUARD-SPROC-DISCHARGE CONV.	B-134402	2
7	GUARD-DISCHARGE CONV. DRIVE	B-134401	2
6	CHAIN-ROLLER-"MFRS STD" 40-50	090011	000000
5	SPROCKET-DRIVEN-MFRS STD. BRIDGE	000000	2
4	SPROCKET-DRIVE-"MFRS STD. #10-1000-14-400100001	000000	2
3	BRACKET-MOTOR BRACKET	B-133358	2
2	BRACKET-MOTOR-CONV. DRIVE	B133359	2
1	MOTOR-"KVAULTING" ESC 190T 1000 KW 1800 RPM 50 HZ 3 PH 208V 3 W 1.5	000000	2
NO.	DESCRIPTION	PART NO.	QTY

NOTES:
 1) QUANTITIES SHOWN IN THE MATERIAL LIST ARE FOR ONE DISCHARGE CONVEYOR STATION ONLY.
 2) THE LOCATION OF CONVEYOR DRIVE SPROCKETS ARE INSIDE BETWEEN STATIONS 3 & 4.

MODEL CONVEYOR SYSTEM CONVEYOR SYSTEM 125 HICKORY AVENUE DUNBAR, PA 15028 PH 724/837-2200 FAX 724/837-2201 WWW WWW	PROJECT NO. 131648 DRAWING NO. 83249.77 DATE 11/13/08 SCALE 1:1 SHEET NO. 131648