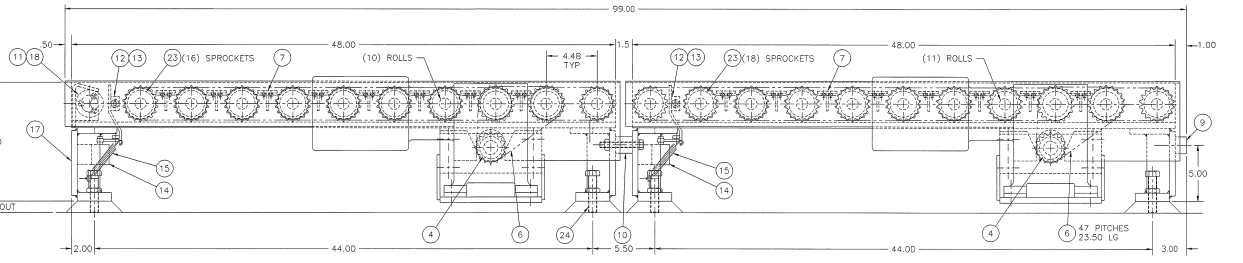
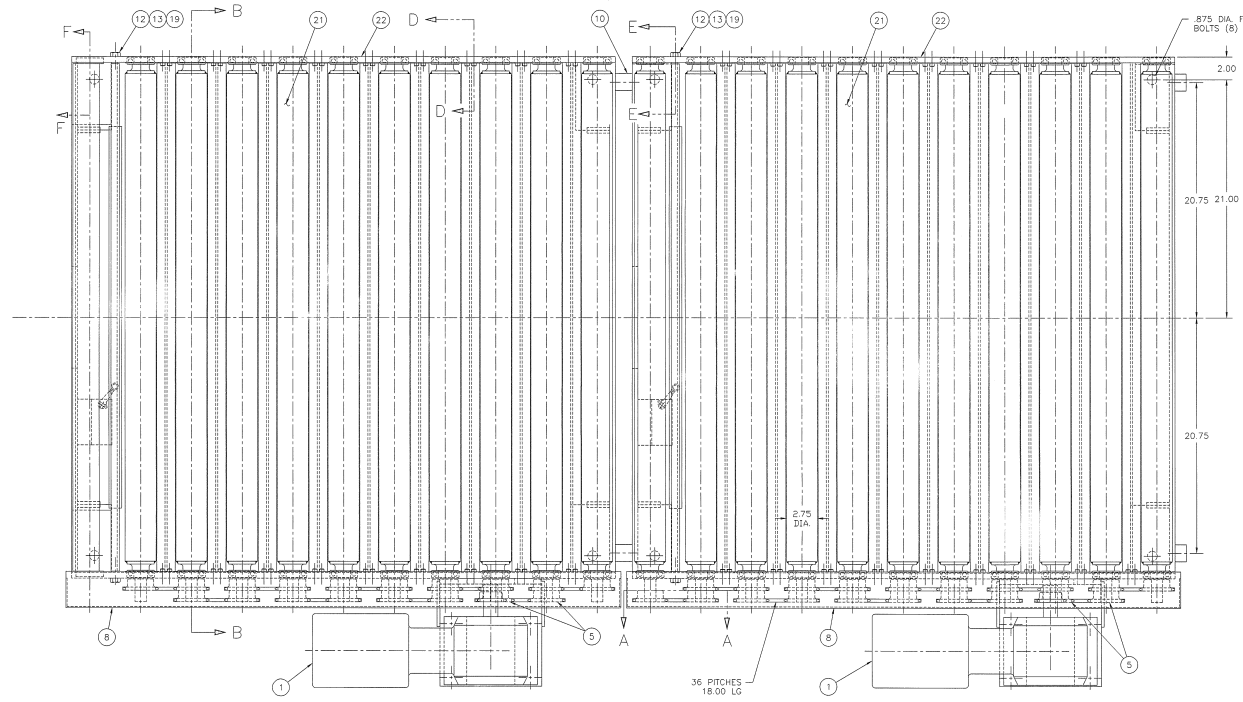


DATE	BY	CHKD	BY
03-28-94	A	ROD VERT	SG
06-10-90	A	CONVEYOR 1	SG
06-21-90	E	1-1000V-1012V	SG



25	B-143385	BRACE-GUARD	2	4
24	K-006100	SET SCREW .750"-10 X 3.25 LG	8	24
23	K-094289	SPRKT-"MFG-STD" DRIVEN #40B1B.	34	156
22	B-133356	FRAME-SIDE DISCHARGE CONV.	4	12
21	C-128003	ASSEMBLY-CONVEYOR ROLL	21	-
20	K-093731	BEARING-"N.D." #Z-499506	42	216
19	K-750977	HEX HD SCREW .500"-13 X 2.00 LG	4	8
18	C-128005	BRACKET-CONV. STOP	2	4
17	C-133357	BEAM-SUPPORT DISCHARGE CONV.	4	12
16	B-128025	PLATE-TAPPING (L.S.)	2	5
15	K-094451	SPRING-"LEE" EXTENSION PART #L-006E-10	2	4
14	K-093805	SWITCH-"SQUARE D" LIMIT-9007 TYPE B5482-C4	3	4
13	B-126784	PLATE-SWING-(L.S.) CONV.	2	4
12	K-091444	BUSHING-"OILITE" #FF-620-1	4	8
11	A-128029	PLUG-CONV. STOP BRACKET	4	8
10	B-121729	SPACER-CONV. TO CONV. 1.50 TK.	2	4
9	K-243734	SPACER-CONV. TO STACKER 1.00 TK.	2	4
8	B-126782	GUARD-SPROCKET-DISCHARGE CONV.	2	8
7	B-140039	BAR-TEE #M1020 1/8 x 1.75 x 1.75 x 44.88 LG	18	56
6	K-090911	CHAIN-"MFG-STD" ROLLER #40-SOP AS REQ'D/INT	4	8
5	A-216790	SPROCKET-DRIVEN #40B19 (SPECIAL)	4	8
4	K-094290	SPRKT-"MFG-STD" 1.25 BORE PART #A0B1B.#40B15.	2	4
3	B-143473	BRKT-MOTOR MFG. SUPPORT	2	4
2	B-133359	BRKT-MOTOR-CONV. DRIVE	2	4
1	K-094016	MOTOR-"WINKSMITH" CH MOTOR/OUTPUT 1/2 HP W/ 1750 RPM #MACTW-3/4 HP W/ 1750 RPM 50:1 RATIO FRAMES#3 (POLL 2000, 20)	2	4

PARTS LIST		INQ RTRN	
ITEM	PART NO.	DESCRIPTION	PRO/BGM
COMPANY: VERNER INTERNATIONAL GROUP INC. ALL RIGHTS RESERVED. THIS DOCUMENT IS THE PROPERTY OF VERNER INTERNATIONAL GROUP INC. AND IS TO BE USED ONLY FOR THE PROJECT AND SITE SPECIFICALLY IDENTIFIED HEREIN. IT IS TO BE RETURNED TO VERNER INTERNATIONAL GROUP INC. UPON COMPLETION OF THE PROJECT.			
DATE	03-28-94	BY	SG
DATE	06-10-90	BY	SG
DATE	06-21-90	BY	SG
SCALE	AS SHOWN	SCALE	AS SHOWN

NOTE: THIS DRAWING REPLACES D-140035

METRIC - D-299985

