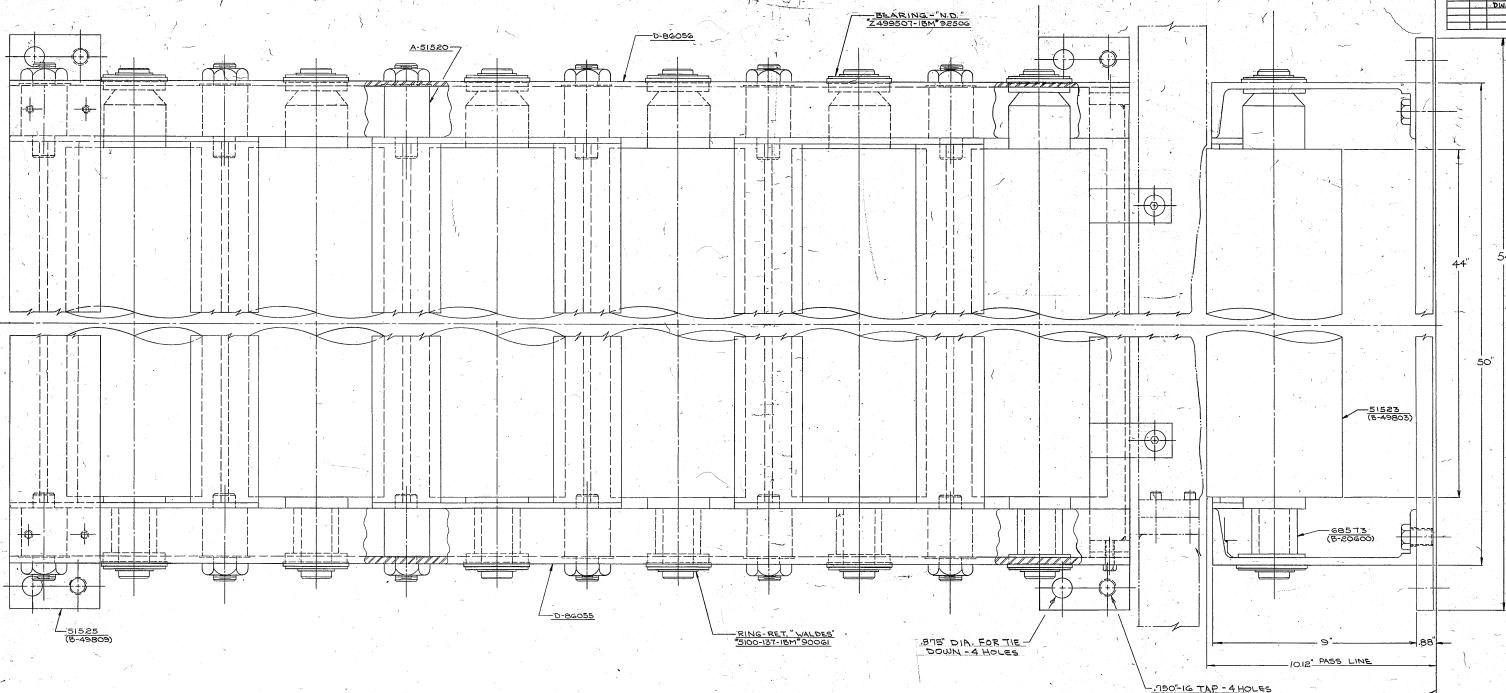


PROJECT		D-86058	
DATE	BY	REVISION	BY



44'
54'
50'

S1525 (8-49805)

68573 (8-20460)

S1525 (8-49805)

D-86058

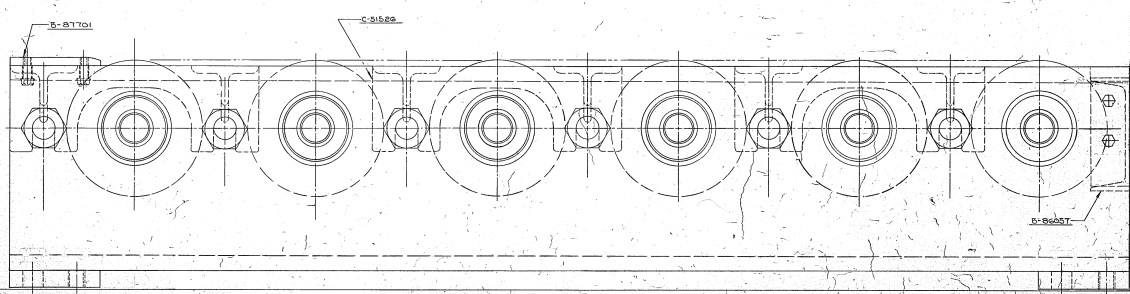
RING-RET. VALVES 5000-317-REV. 50010

3/8" DIA. FOR TIE DOWN - 4 HOLES

1/80-16 TAP - 4 HOLES FOR LEVELING SCREWS

FLOOR LINE

FEED DIRECTION



SOLDS CONTAINED UNLESS OTHERWISE SPECIFIED ALL DIMENSIONS IN INCHES UNLESS OTHERWISE SPECIFIED FINISHES AS SHOWN UNLESS OTHERWISE SPECIFIED	SHEET NO. 2 OF 2 TITLE D-86058 PART NO. ASSY - IDLE CONVERTER QUANTITY 300-36-4 STACKER DATE 10/13/55 DRAWN BY TGT:SS - TI CHECKED BY D-86058	
--	--	--