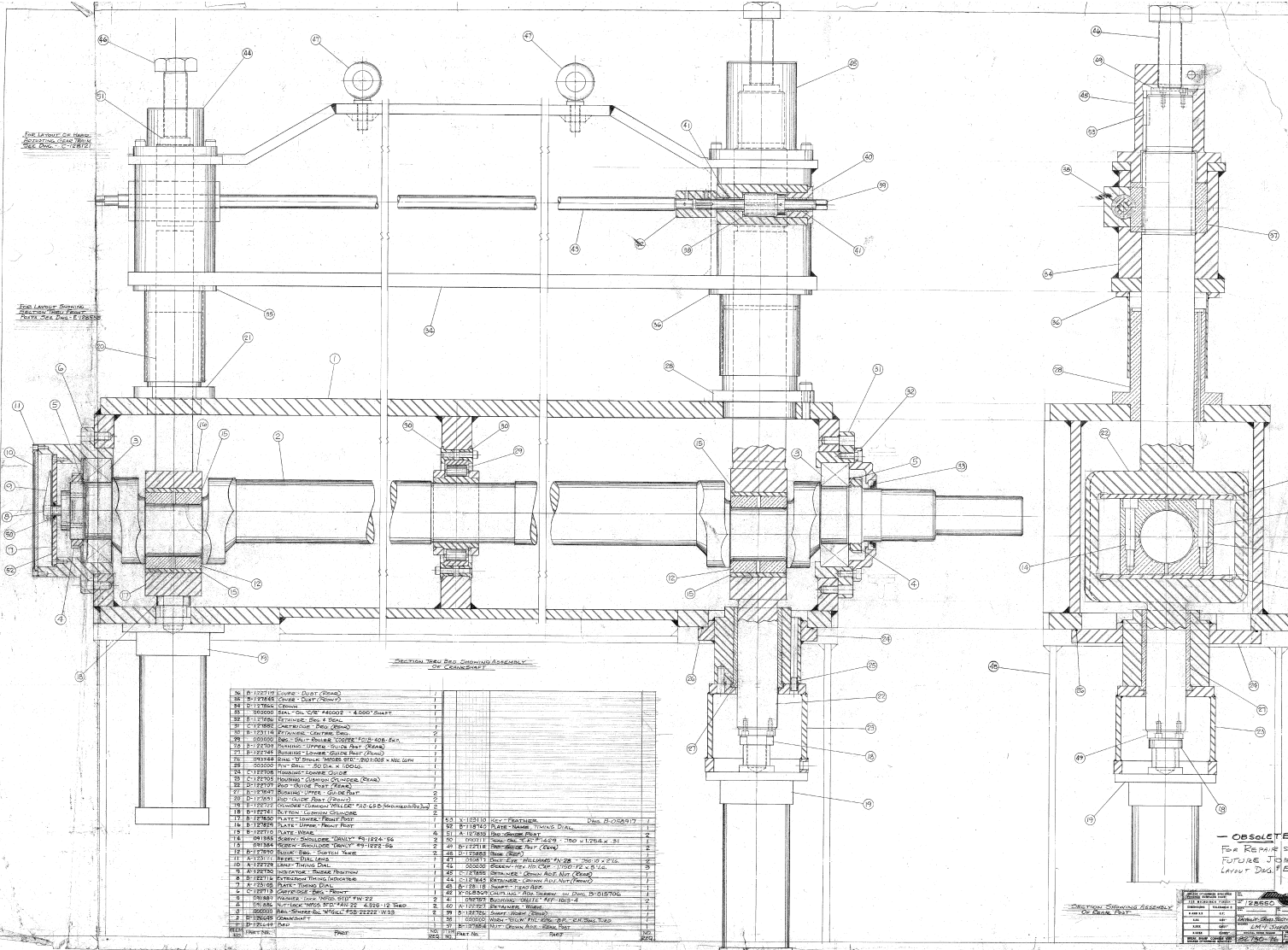


FOR LAMINAR FLOW
 SECTION - UPPER PART
 PARTS SEE PAGE E 125530

FOR LAMINAR FLOW
 SECTION - LOWER PART
 PARTS SEE PAGE E 125530



SECTION - UPPER PORT CONTROL ASSEMBLY
 OF CONTROL VALVE

1	122719	COUPLER - BALL (2000)	1	41	110110	PLATE - BRASS	1
2	122719	COUPLER - BALL (2000)	1	42	110110	PLATE - BRASS	1
3	122719	COUPLER - BALL (2000)	1	43	110110	PLATE - BRASS	1
4	122719	COUPLER - BALL (2000)	1	44	110110	PLATE - BRASS	1
5	122719	COUPLER - BALL (2000)	1	45	110110	PLATE - BRASS	1
6	122719	COUPLER - BALL (2000)	1	46	110110	PLATE - BRASS	1
7	122719	COUPLER - BALL (2000)	1	47	110110	PLATE - BRASS	1
8	122719	COUPLER - BALL (2000)	1	48	110110	PLATE - BRASS	1
9	122719	COUPLER - BALL (2000)	1	49	110110	PLATE - BRASS	1
10	122719	COUPLER - BALL (2000)	1	50	110110	PLATE - BRASS	1
11	122719	COUPLER - BALL (2000)	1	51	110110	PLATE - BRASS	1
12	122719	COUPLER - BALL (2000)	1	52	110110	PLATE - BRASS	1
13	122719	COUPLER - BALL (2000)	1	53	110110	PLATE - BRASS	1
14	122719	COUPLER - BALL (2000)	1	54	110110	PLATE - BRASS	1
15	122719	COUPLER - BALL (2000)	1	55	110110	PLATE - BRASS	1
16	122719	COUPLER - BALL (2000)	1	56	110110	PLATE - BRASS	1
17	122719	COUPLER - BALL (2000)	1	57	110110	PLATE - BRASS	1
18	122719	COUPLER - BALL (2000)	1	58	110110	PLATE - BRASS	1
19	122719	COUPLER - BALL (2000)	1	59	110110	PLATE - BRASS	1
20	122719	COUPLER - BALL (2000)	1	60	110110	PLATE - BRASS	1
21	122719	COUPLER - BALL (2000)	1	61	110110	PLATE - BRASS	1
22	122719	COUPLER - BALL (2000)	1	62	110110	PLATE - BRASS	1
23	122719	COUPLER - BALL (2000)	1	63	110110	PLATE - BRASS	1
24	122719	COUPLER - BALL (2000)	1	64	110110	PLATE - BRASS	1
25	122719	COUPLER - BALL (2000)	1	65	110110	PLATE - BRASS	1
26	122719	COUPLER - BALL (2000)	1	66	110110	PLATE - BRASS	1
27	122719	COUPLER - BALL (2000)	1	67	110110	PLATE - BRASS	1
28	122719	COUPLER - BALL (2000)	1	68	110110	PLATE - BRASS	1
29	122719	COUPLER - BALL (2000)	1	69	110110	PLATE - BRASS	1
30	122719	COUPLER - BALL (2000)	1	70	110110	PLATE - BRASS	1
31	122719	COUPLER - BALL (2000)	1	71	110110	PLATE - BRASS	1
32	122719	COUPLER - BALL (2000)	1	72	110110	PLATE - BRASS	1
33	122719	COUPLER - BALL (2000)	1	73	110110	PLATE - BRASS	1
34	122719	COUPLER - BALL (2000)	1	74	110110	PLATE - BRASS	1
35	122719	COUPLER - BALL (2000)	1	75	110110	PLATE - BRASS	1
36	122719	COUPLER - BALL (2000)	1	76	110110	PLATE - BRASS	1
37	122719	COUPLER - BALL (2000)	1	77	110110	PLATE - BRASS	1

— OBSOLETE —
 FOR REPAIRS ONLY
 FUTURE JET'S USE
 LIMIT Dwg. E-122-70

SECTION - LOWER PORT CONTROL ASSEMBLY OF CONTROL VALVE		PART NO.	
1	122719	1	122719
2	122719	2	122719
3	122719	3	122719
4	122719	4	122719
5	122719	5	122719
6	122719	6	122719
7	122719	7	122719
8	122719	8	122719
9	122719	9	122719
10	122719	10	122719
11	122719	11	122719
12	122719	12	122719
13	122719	13	122719
14	122719	14	122719
15	122719	15	122719
16	122719	16	122719
17	122719	17	122719
18	122719	18	122719
19	122719	19	122719
20	122719	20	122719
21	122719	21	122719
22	122719	22	122719
23	122719	23	122719
24	122719	24	122719
25	122719	25	122719
26	122719	26	122719
27	122719	27	122719
28	122719	28	122719
29	122719	29	122719
30	122719	30	122719
31	122719	31	122719
32	122719	32	122719
33	122719	33	122719
34	122719	34	122719
35	122719	35	122719
36	122719	36	122719
37	122719	37	122719