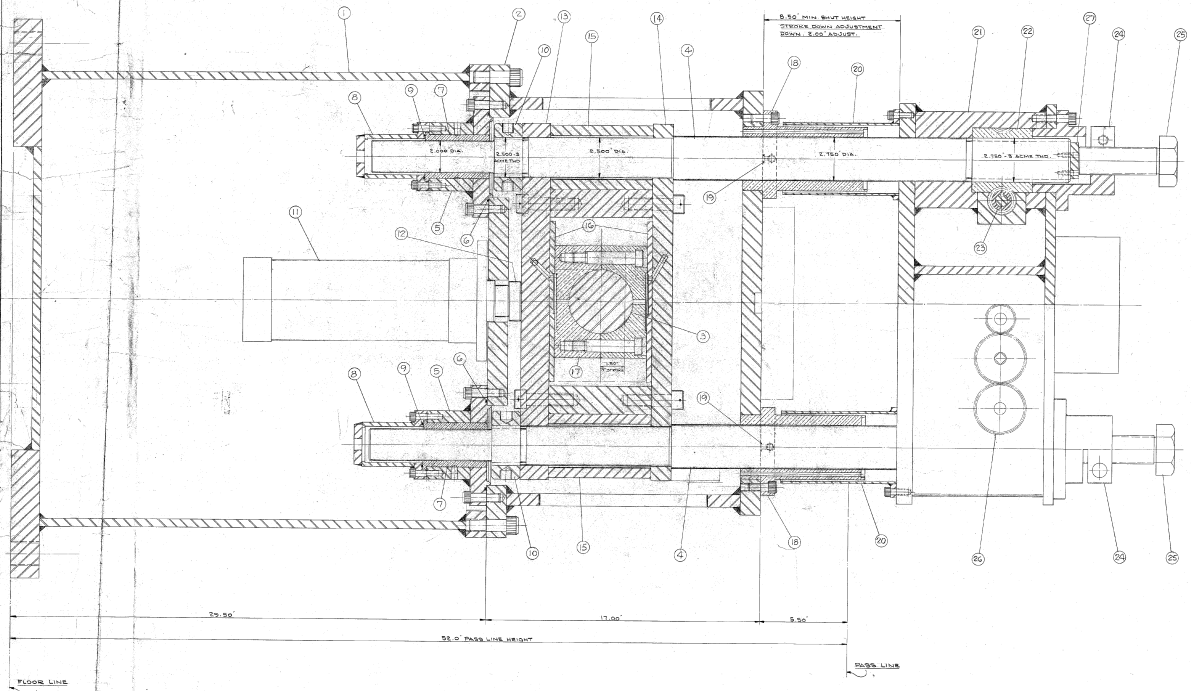


NO.	QTY	DESCRIPTION	UNIT	REMARKS
1	1	1/2" DIA. BRASS	1	
2	1	1/2" DIA. BRASS	1	
3	1	1/2" DIA. BRASS	1	
4	1	1/2" DIA. BRASS	1	
5	1	1/2" DIA. BRASS	1	
6	1	1/2" DIA. BRASS	1	
7	1	1/2" DIA. BRASS	1	
8	1	1/2" DIA. BRASS	1	
9	1	1/2" DIA. BRASS	1	
10	1	1/2" DIA. BRASS	1	
11	1	1/2" DIA. BRASS	1	
12	1	1/2" DIA. BRASS	1	
13	1	1/2" DIA. BRASS	1	
14	1	1/2" DIA. BRASS	1	
15	1	1/2" DIA. BRASS	1	
16	1	1/2" DIA. BRASS	1	
17	1	1/2" DIA. BRASS	1	
18	1	1/2" DIA. BRASS	1	
19	1	1/2" DIA. BRASS	1	
20	1	1/2" DIA. BRASS	1	
21	1	1/2" DIA. BRASS	1	
22	1	1/2" DIA. BRASS	1	
23	1	1/2" DIA. BRASS	1	
24	1	1/2" DIA. BRASS	1	
25	1	1/2" DIA. BRASS	1	
26	1	1/2" DIA. BRASS	1	
27	1	1/2" DIA. BRASS	1	
28	1	1/2" DIA. BRASS	1	
29	1	1/2" DIA. BRASS	1	
30	1	1/2" DIA. BRASS	1	
31	1	1/2" DIA. BRASS	1	
32	1	1/2" DIA. BRASS	1	



DATE	1/2/76
BY	...
CHECKED	...
APP'D	...
SCALE	1:1
TITLE	LAYOUT SHEET FOR PARTS
PROJECT	...
NO.	...
REV.	...
DATE	1/2/76
BY	...
CHECKED	...
APP'D	...
SCALE	1:1
TITLE	LAYOUT SHEET FOR PARTS
PROJECT	...
NO.	...
REV.	...