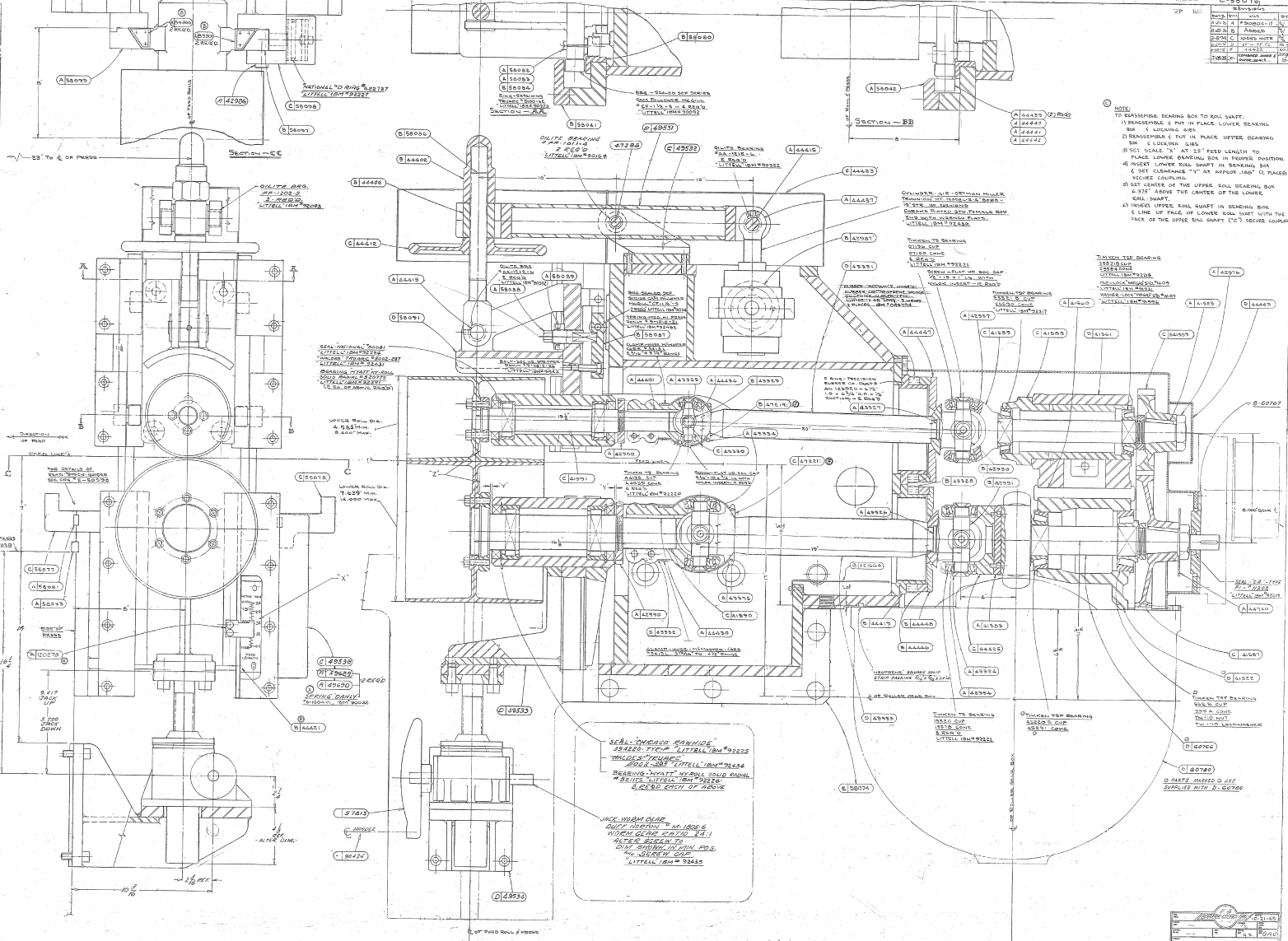


E-58016		REVISED	
NO.	DATE	BY	CHKD.
1	10/20/50	W. J.
2	11/15/50
3	12/15/50
4	1/15/51
5	2/15/51
6	3/15/51
7	4/15/51
8	5/15/51
9	6/15/51
10	7/15/51
11	8/15/51
12	9/15/51
13	10/15/51
14	11/15/51
15	12/15/51



- NOTE:
- 1) BRASS SHAFT & PUT IN PLACE LOWER BEARING BOX & LOWER BALL.
 - 2) BRASS SHAFT & PUT IN PLACE UPPER BEARING BOX & LOWER BALL.
 - 3) SET SCREW "X" AT 1/2" FEED LENGTH TO PLACE LOWER BEARING BOX IN PROPER POSITION.
 - 4) INSERT LOWER BALL SHIRT IN BEARING BOX & SET CLEARANCE "Y" AT APPROX. 1/64" & PLACE TOGGLE COUPLING.
 - 5) SET CENTER OF THE UPPER BALL BEARING BOX & 1/32" ABOVE THE CENTER OF THE LOWER BALL SHAFT.
 - 6) INSERT UPPER BALL SHIRT IN BEARING BOX & LINE UP FACE OF LOWER BALL SHIRT WITH THE FACE OF THE UPPER BALL SHIRT (C7). SECURE COUPLING.

SEAL MEDGES REMOVE 52452. FILE 52452. LITTELL I/M 92452
 TIGER'S HEAD
 SEALS AND LITTELL I/M 92452
 BEARING "H" TIGER'S HEAD SEALS
 SEALS LITTELL I/M 92452
 1/32" END OF ABOVE

ACK WITH OIL
 OILY MIXTURE TO W. 1000-6
 WHEN OIL IS SET (1-1)
 ALSO BEARING
 OIL SPRING IN OIL PANS
 W. 1000-6
 LITTELL I/M 92452

E-58016		REVISED	
NO.	DATE	BY	CHKD.
1	10/20/50	W. J.
2	11/15/50
3	12/15/50
4	1/15/51
5	2/15/51
6	3/15/51
7	4/15/51
8	5/15/51
9	6/15/51
10	7/15/51
11	8/15/51
12	9/15/51
13	10/15/51
14	11/15/51
15	12/15/51