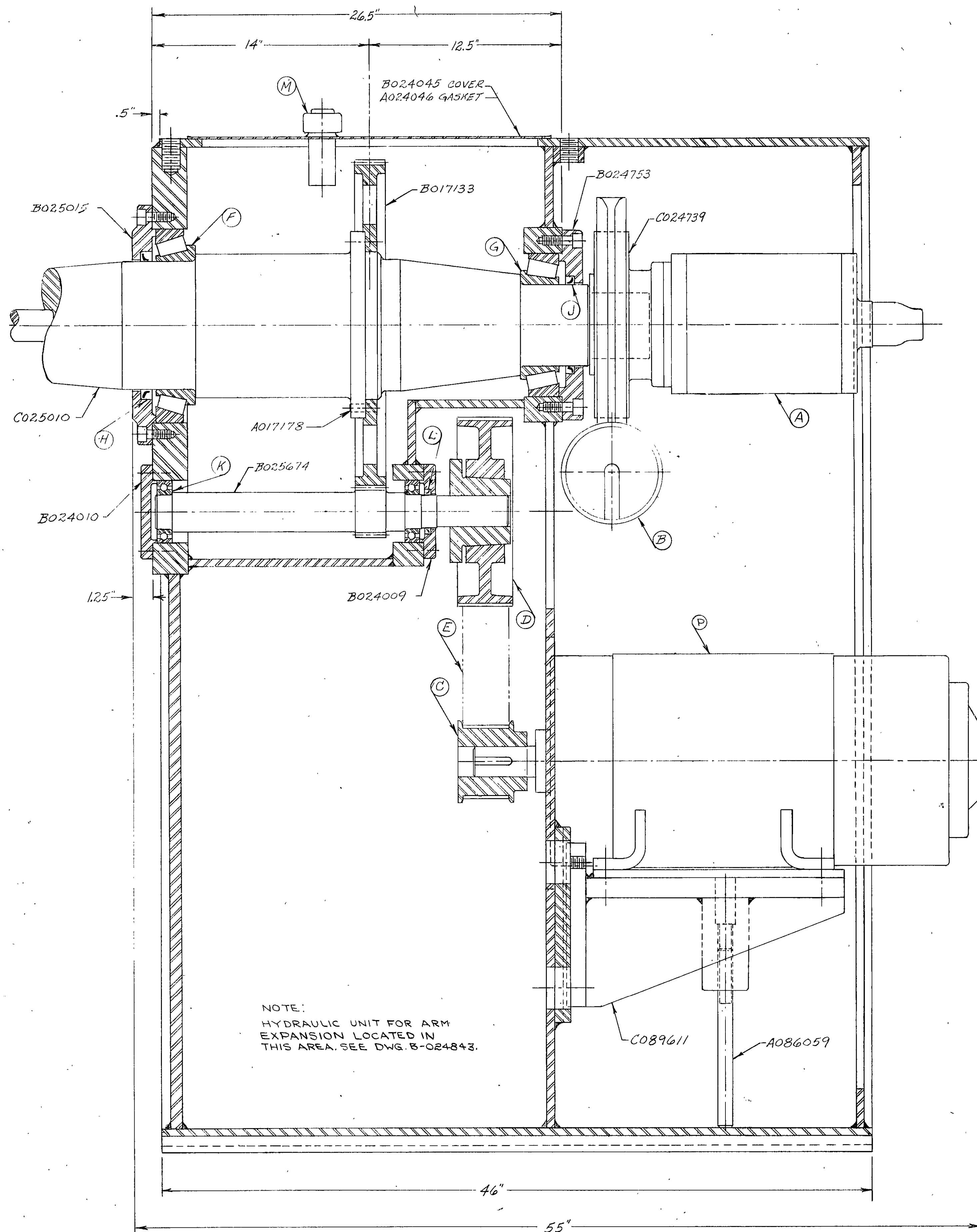
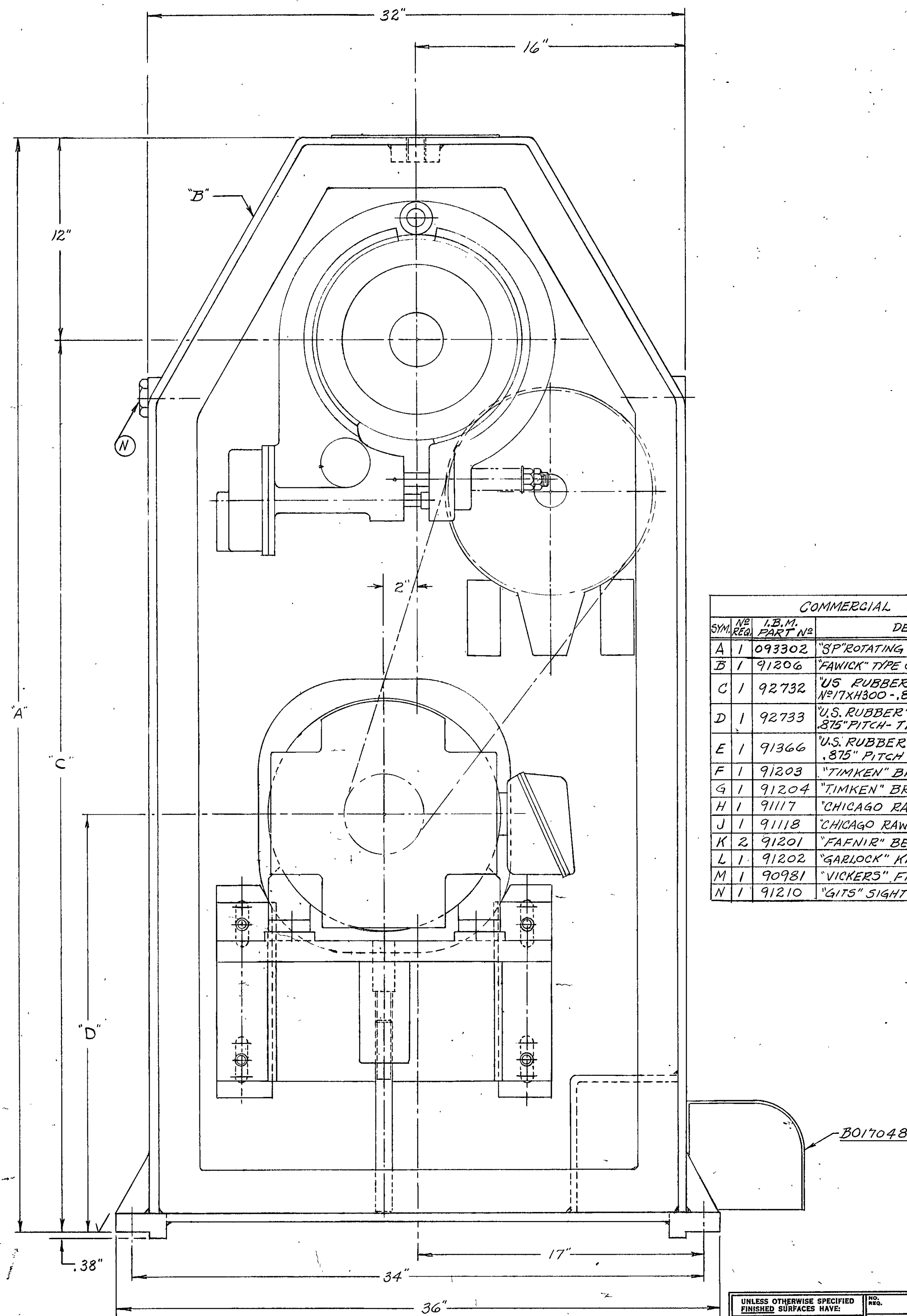


FILING LOCATION **D-104970**

| REVISIONS | | | |
|-----------|-----|-----------|-----|
| DATE | BY | WAS | BY |
| 10-24-72 | FOR | ORIG. SEE | ELV |
| | | D104980 | |



NOTE:
HYDRAULIC UNIT FOR ARM
EXPANSION LOCATED IN
THIS AREA. SEE DWG. S-024843.



| SYM. NO. REQ. | | I.B. M. PART NO. | | DESCRIPTION |
|---------------|---|------------------|--|-------------|
| A | 1 | 093302 | "SP" ROTATING HYD. CYLINDER - 8" BORE - 7" STROKE | |
| B | 1 | 91206 | "FAWICK" TYPE C3 BRAKE ELEMENT NO 1203200 | |
| C | 1 | 92732 | "US RUBBER" SPECIAL DRIVE PULLEY NO 17XH300 - .875" PITCH - 1.875" BORE - TYPE 6F | |
| D | 1 | 92733 | "US RUBBER" DRIVEN PULLEY NO 44XH300 .875" PITCH - TYPE 9W - WITH QD STYLE "F" BUSH. | |
| E | 1 | 91366 | "US RUBBER" TIMING BELT NO 700XH300 .875" PITCH - 3" WIDE | |
| F | 1 | 91203 | "TIMKEN" BRG. NO 93825A & 93125 | |
| G | 1 | 91204 | "TIMKEN" BRG. NO 95525 & 95925 | |
| H | 1 | 91117 | "CHICAGO RAWHIDE" OIL SEAL NO 82522 | |
| J | 1 | 91118 | "CHICAGO RAWHIDE" OIL SEAL NO 52451 | |
| K | 2 | 91201 | "FAFNIR" BEARING NO 211W | |
| L | 1 | 91202 | "GARLOCK" KLOSURE OIL SEAL NO 63X1360 | |
| M | 1 | 90981 | "VICKERS" FILLER CAP NO SP-113-B | |
| N | 1 | 91210 | "GITS" SIGHT GAGE NO 4056 - 1 1/2 P.I. | |

| | | | |
|---|-------------|-----------------------|--------|
| UNLESS OTHERWISE SPECIFIED FINISHED SURFACES HAVE: | | DATE | |
| 125 MICROINCH FINISH | | 10-24-72 | |
| DIMENSIONS | TOLERANCE ± | SCALE | BY |
| X AND X.X | 0.1" | 3" = 1'-0" | ELV |
| X.XX | 0.01" | TITLE | |
| X.XXX | 0.001" | ASSEMBLY | |
| X.XXXX | 0.0005" | MACHINE | |
| BREAK SHARP CORNERS 0.03 UNLESS OTHERWISE SPECIFIED | | ORIGINAL ORDER NUMBER | |
| | | 79913-72 | |
| | | DWG. NO. | 104970 |
| | | DATE | |