

JUL 1967 PARTS LIST (B)

DATE	SYN	WAS	BY	DATE	SYN	WAS	BY
4/6/67	F	RT105-08-070-B	SSA	10/5/83	A	RT105-08-070-B	WAS
4/23/68	B	ADDED 21. 13 NC TAP	SSA	4/23/68	B	ADDED 21. 13 NC TAP	SSA
10/18/68	D	ADDED VIEW	SSA	10/18/68	D	ADDED VIEW	SSA
3/26/69	E	ADDED QUANTITY	SSA	3/26/69	E	ADDED QUANTITY	SSA

ITEM	QTY	PART NAME	CONVERTED PART NO.
1	1	REAR COVER	RT101-08-D
2	1	FRONT COVER	RT102-08-070-D
3	1	CYLINDER TUBE	RT103-08-070-D (213222)
4	1	PISTON	RT101-08-D
5	1	PISTON ROD	(202461) RT100-08-070-102
6	1	PISTON PACKING	(K-097763) RT105-08-A
7	1	O RING	(K-097764) RT107-08-A
8	2	GUIDE PIN	RT108-08-07A
9	2	O RING	(K-097765) RT109-A
10	2	O RING	(K-097766) RT110-08-A
11	2	O RING	(K-097767) RT111-A
12	1	ROD PACKING	(K-097768) RT112-20-A
13	1	ROD BEARING	(202465) RT115-08-20-B
14	1	RETAINING RING	(202464) RT114-08-A
15	AS REQ'D	COVER SCREW	RT115-08-A 5/8-11NC x 1/4 LG.
16	1	COUPLING HOUSING	(205148) RT116-C
17	1	COUPLING SHAFT	(205149) RT117-C
18	1	COUPLING CAP	(205150) RT118-A
19	2	BALL BEARING	(202463) RT119-A FAFNIR 9109 PP
20	8	O RING	(K-097769) RT120-A PRECISION R. BEBEER PEG COMPOUND 1538
21	1	SPACER	(205152) RT121-A
22	2	COUPLING CAPSCREW	(205153) RT122-A 10-24UNC x 1/2 LG.
23	1	RETAINING RING	(205154) RT124-A WALDEES TRU-ARC NS 5100-177
24	2	BACK UP RING (PISTON)	(202466) RT124-08A CHGO. SAWHIDE
25	1	BACK UP RING (ROD)	(K-097770) RT125-20A CHGO. SAWHIDE 491337
26	6	BACK UP RING (COUPLING)	(K-097771) RT126-A PARKER
27	1	O RING	(K-097772) RT125-A UNIFORM DASH HOSE 1/28 x 2.00 LOGE NOHL
28	1	COUPLING SHAFT RETAINER	RT300-334A
29	1	RETAINER CAPSCREW	RT126 A

CREANE HOVA-CUP
1/8" ID x 3.00" L
VALVE SEAL
ARP 258 NS 345

NAT. SEAL
ARP 559 NS 210

NAT. SEAL
ARP 558 NS 210

NAT. SEAL
ARP 557 NS 210

NAT. SEAL
ARP 268 NS 113

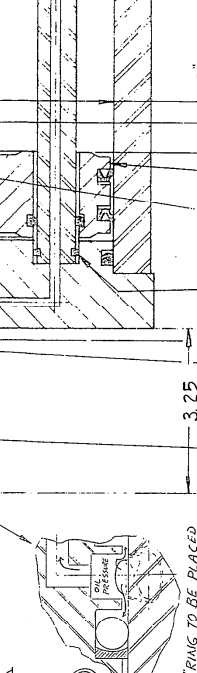
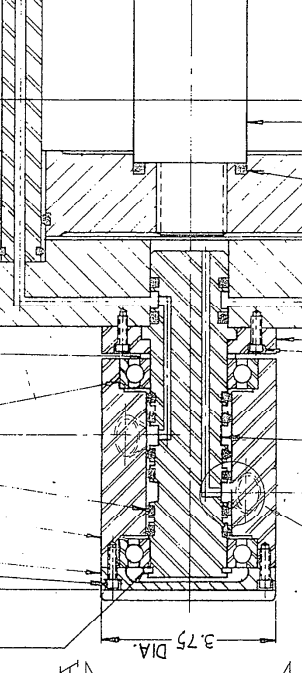
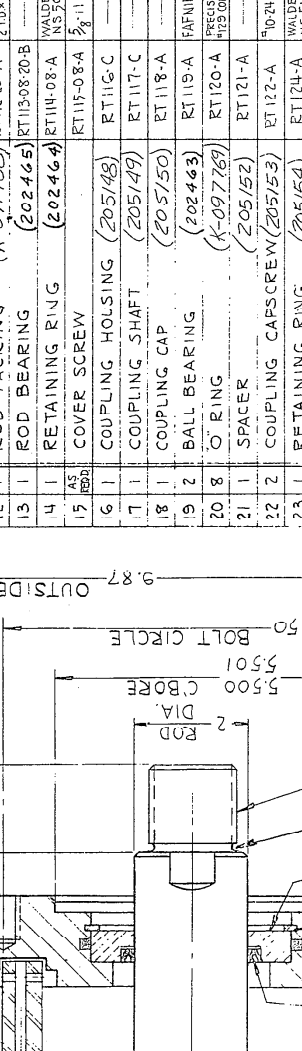
CREANE HOVA-CUP
2.10" x 2.34" O.D. x 1/8"

WALDEES TRU-ARC
NS 5100-177
5/8-11NC x 1/4 LG.

FOR F.J. LITTELL MACHINE
8" BORE x 7" STROKE
COMPLETE CYLINDER ASSY
LITTELL I.B.M. # 093596

WHEN ORDERING PARTS
SPECIFY:

1) PART NUMBER
2) PART NAME
3) MODEL NUMBER
4) SERIAL NUMBER
5) QUANTITY



SECTION AA-AA

BORE: 8" STROKE: 7"

REF. LITTELL PART NO.

OPTIONAL RETAINING BAR GUIDE AS SHOWN

UNLESS OTHERWISE SPECIFIED:
SMOOTH TO R2.5
HOLE DIMENSIONS TO R4
ALL DIMENSIONS UNLESS OTHERWISE SPECIFIED ARE TO BE CONCENTRIC
WITH OTHER DIMENSIONS UNLESS OTHERWISE SPECIFIED
REMOVE ALL BURRS AND DRILL ALL SHARP EDGES.

I.B.M. # 093612 - PACKING KIT - CONSISTING OF

ITEM NO.	DESCRIPTION	QTY	REF. NO.
6	PISTON PACKING	1	RT106-08-A 097763
7	O RING - ROD BEARING	1	RT107-08-A 097764
9	O RING - GUIDE FIN	1	RT109-A 097765
10	O RING - FRONT & REAR COVER	2	RT110-08-A 097766
11	O RING - GUIDE PIN	1	RT111-A 097767
12	ROD PACKING	1	RT112-20-A 097768
20	O RING - COUPLING	1	RT120-A 097769
25	BACK UP RING - ROD	1	RT125-20-A 097770
26	BACK UP RING - COUPLING	1	RT126-A 097771
27	O RING - PISTON ROD	1	RT125-A 097772

DATE: 14 JUNE 76

APPROVED BY:

DRAWING NUMBER
RT-300-32

LITTELL DRG # C-126070