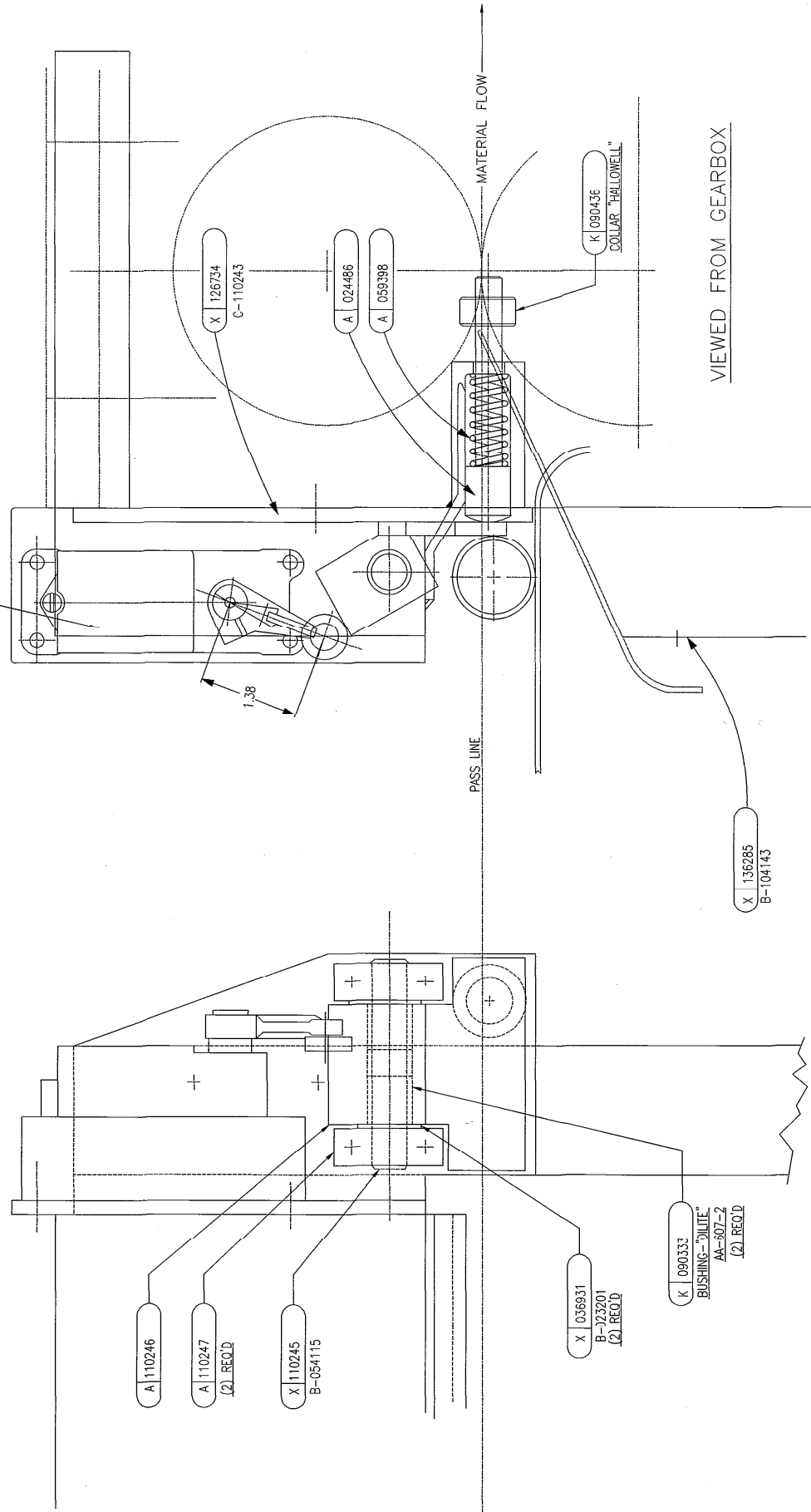


FLING LOCATION C-143999			
DATE	SYM	WAS	BY
5/8/81	A	K-090567	SC/JUC

C-110244

K 1095277
SWITCH - LIMIT "S.O.D."
#9007-ANT2-BA-1



A 110246

A 110247
(2) REQD

X 110245
B-054115

X 036931
B-23201
(2) REQD

K 090333
BUSHING - "DILITE"
AA-907-2
(2) REQD

X 136285
B-104143

X 126734
C-110243

A 024486

A 059398

K 090436
DOLLAR "HALLOWELL"

VIEWED FROM GEARBOX

ENG CROSS REF:
D-274680 - "A-B" SWITCH
FOR LT TO RT FEED DIRECTION
SEE C-281104
FOR METRIC TH'DS
SEE D-288394

UNLESS OTHERWISE SPECIFIED FINISHED SURFACES HAVE:		CHGD.	8/29/79	JUC
DIMENSIONS	TOLERANCE ±	DRN.	8/29/79	ROG
X AND .XX	0.1"	DES.		
X.XX	0.01"	TITLE	LAYOUT - CLEANING ROLL SAFETY SWITCH	
X.XXX	0.001"	DATE		
X.XXXX	0.0005"	MACHINE	#-3B STRAIGHTENER	
ANGLES ± 0°		ORIG. NO.	84200	
BREAK SHARP CORNERS 0.03		SHT	1 OF 1	
UNLESS OTHERWISE SPECIFIED		SCALE	FULL	

LITTELL
INTERNATIONAL GROUP INC.
PART NO. C-143999