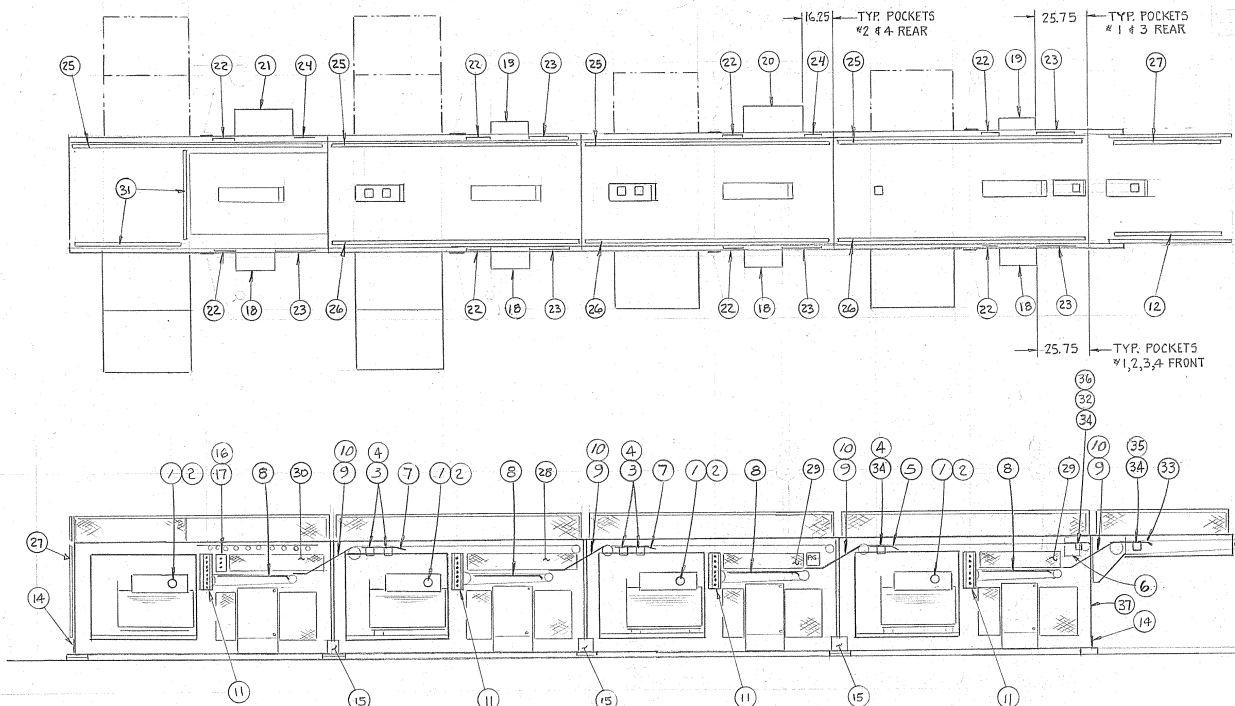


2B	B-135955	GUARD-HINGED 8"x48.5"	1	30	X-150697 B-135952	GUARD-HINGED 8"x44.5"	1
29	X-161828 B-135955	GUARD-HINGED 8"x57.5"	2	31	X-136838 B-135957	GUARD-#4 STATION 12"x48"	2

32	X-239019 A-206271	BRACKET-MTG-"TURCK" SENSOR	1
33	X-257256 B-206272	DEFLECTOR-PROXIMITY "TURCK"	1

C-257260			
REVISIONS			
DATE	BY	WAR	BY
---	---	C-268973	---
---	---	Z12-227	---
9/9/80	A	2226273	25/100
MICROFILMED			
NOV 1988			



13	B-135956	GUARD- BACK END	1	27	X-135862 B-135957	GUARD-ENTRY REAR 12.00"x42.5"	1
12	X-135961 B-135955	GUARD-ENTRY FRONT 12.00"x42.5"	1	26	X-135958 B-135957	GUARD-TOP FRONT 12.00"x119.0"	3
11	B-162892	PLATE- PUSHBUTTON 8 HOLES	8	25	B-135957	GUARD-TOP REAR 12.00"x119.0"	4
10	C-131204	PLATE-CHUTE STU. STL.	4	24	X-125966 C-128858	GUARD- 26.50"x19.00"	2
9	C-131203	BRACKET - SUPPORT CHUTE	4	23	X-125959 C-128858	GUARD- 26.50"x19.00"	6
8	X-150688 B-138873	DEFLECTOR- CONV. #3 f 4	4	22	X-128860 C-128858	GUARD- 26.50"x12.00"	8
7	B-206272	DEFLECTOR- PROX #2 f 3 (2 SWITCHES)	2	21	D-204470	BOX - TERMINAL 12" DP x 28" WD # 4 R	1
6	X-252331	PLATE- SAFETY (STATION #1- FRONT) (B-140301)	1	20	X-204471 D-204470	BOX - TERMINAL 12" DP x 28" WD # 2 R	1
5	A-266309	DEFLECTOR ENTRY #2 GATE (1 SWITCH)	1	19	X-212319 D-212318	BOX - TERMINAL 5 1/4" DP x 18" WD #1 f 3 R	2
4	A-206271	BRACKET- PROX. SWITCH	5	18	D-212318	BOX - TERMINAL 8" DP x 18" WD (FRONT)	4
3	K-098455	SW-"TURCK" PROX. # B120-647-A23X - B1131	4	17	K-204731	BOX "HOFFMAN" 3 HOLES #E-3PB	1
2	B-212296	BRACKET- PROX. SWITCH	4	16	X-102852 B-206450	PLATE P.B. BOX MTG	1
1	K-204776	SW-"TURCK" PROX. # B1-10-630-A22X - B1131	4	15	A-161193	COVER-FRAMES ELECTRICAL	6
0	PART NO.	DESCRIPTION	NO. REQ'D	14	A-201155	COVER-ENDS SIDEFAMES	4

34	K-254358	SW" TURCK" PROX # B1-20-647-AN4X-B1141(0)	3
35	X-248318 A-206271	BRACKET-MTG-"TURCK" SENSOR (SHORT)	1
36	A-257255	DEFLECTOR-PROX #1 HOLD	1
37	B-251834	GUARD-ENTRY CONV. - LOWER	1

NOTE:
FOR "TURCK" A.C. SWITCH SEE C-212327
"PECO" PROX. DWG. SEE C-152450

UNLESS OTHERWISE SPECIFIED FINISHED SURFACE FINISH	125 MICROINCH FINISH	DATE	10-26-88
DIMENSIONS	TOLERANCE ±	BY	WJG
X AND Y	0.1"	CHKD	WJG
XXX	0.01"	DATE	11-7-88
XXXX	0.001"	LAYOUT, PEOP./TEAM BOX/GUARDS	
XXXXX	0.0005"	500 x 40 - 2 STACKER	
XXXXXX	0.0002"	ORIGINAL ORDER NUMBER	89299-88
BREAK SHARP CORNERS 0.02 UNLESS OTHERWISE SPECIFIED		DATE	C 257260