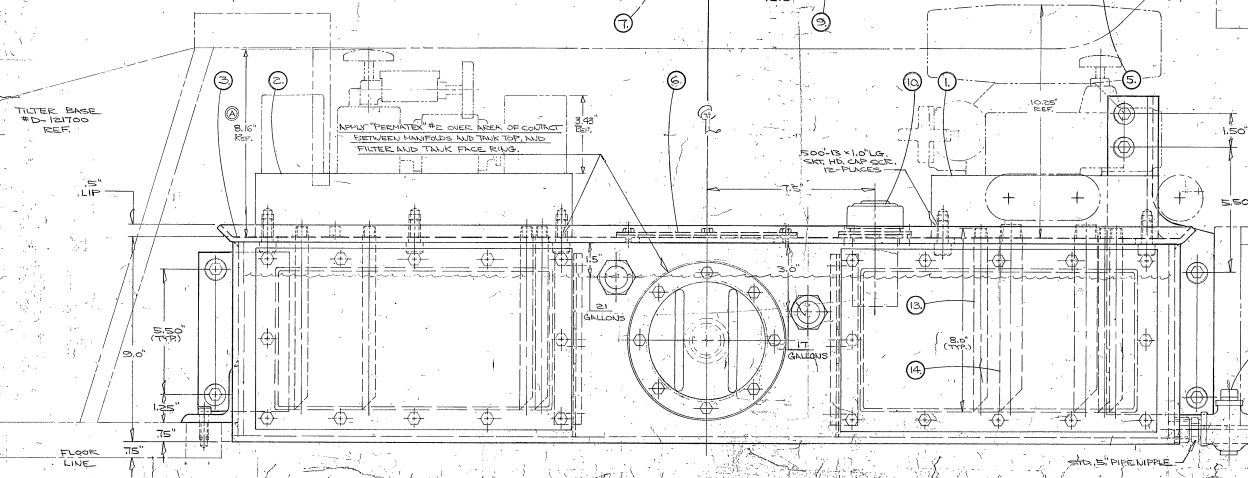


ITEM	REQ	PART NO	DESCRIPTION
1	1	C-12155	60HR ASSY MANIFOLD
		C-12154	50HR HIGH PRESSURE
2	1	C-12155	60HR ASSY MANIFOLD
		C-12154	50HR LOW PRESSURE
3	1	B-12153	TANK-HYDRAULIC
4	2	B-12154	BAFFLE-OIL TANK 8" X 15.5"
5	2	—	COVER-OIL TANK FRONT 8" X 14" SEE TANK WELDMENT "D-12153"
6	1	X-121556	COVER-OIL TANK TOP 8" X 16" ON DWG. # B-010519
7	1	093859	FILTER "ROSS" DIV. OF "F.H. MODEL # 10-T-141-HC-3-DT-3-S WALL MFD. SUBMERSIBLE. MECH. INDICATOR SUCTION FILTER WITH MAGNETS, 1/8" IFT OUTLET PORT, 74 MICRON.
8	1	092555	HOSE-SUCTION "PARKER" HOSE AS FOLLOWS: (1) HOSE # SBI-20, 101' LG. (1) FITTING # OHS-20-20, 1/2" NPT (1) FITTING # OHS-20-20, 3/4" NPT (1) ADAPTOR # OHS-20-20 (2) CLAMP # SBIHC-20 GAUGE-SIGHT GGS # B2020454
9	2	030948	GAUGE-SIGHT GGS # B2020454
10	1	030981	FILTER-OIL TANK "MOORE" # SP-113-C, COMBINATION VENT.
11	1	033607	COCK-"ORANGE" # 300 SQ. HD., 5" IFT
12	1	022203	WASHER-BAFFLE (2X 1/2" X 1/2") ON DWG. # B-12154
13	T	P.S.	PIPE-.25" STD. BLK. SCHED. #40 THD. ONE END, 45" CUT OTHER END, 5.0' LG.
14	2	P.S.	PIPE-.15" STD. BLK. SCHED. #40 THD. ONE END, 45" CUT OTHER END, 5.0' LG.



DATE	BY	CHKD	APP'D
12/15/50	W. J.
12/15/50
12/15/50

LAYOUT-HYDRAULIC TANK
 COL. TITLERS
 12/15/50