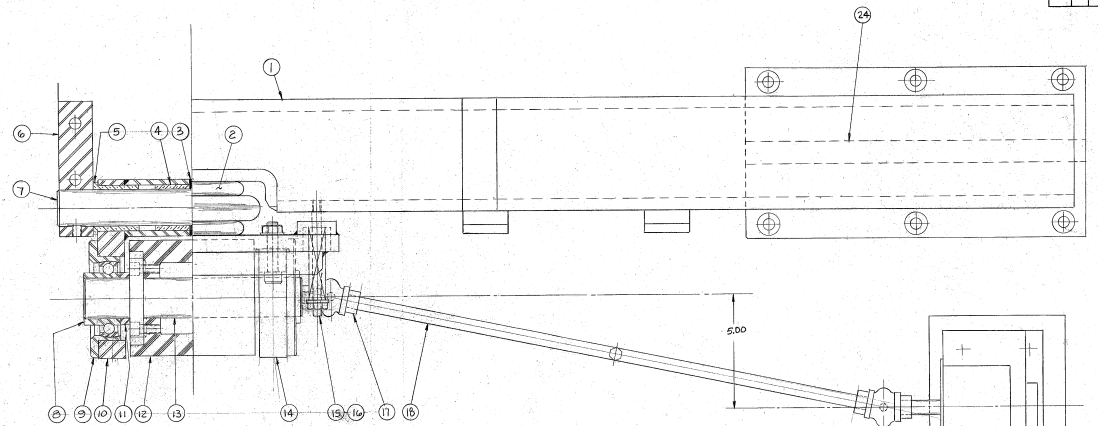


ITEM NO.	PART AN.	DESCRIPTION	QTY
1	D-160721	BEAM-UPPER ROLL SUPPORT	1
2	K-092871	ACTUATOR TROUSERS AIRSTRONG #16	1
3	X-062899	WASHER - BRASS (B-032890)	1
4	K-093466	BUSHING "WHITE" #A-2304-B	2
5	K-093123	BUSHING "WHITE" FLANGED #FF-2000	2
6	A-116664	SUPPORT SHAFT	1
7	X-150702	SHAFT-EXT. (A-116663)	1
8	K-094516	BRG. "MCGILL" WIDE INNER RIMS #MS-25-12	2
9	B-128589	RETAINER - BRG.	2
10	X-160723	ARM-TROUSER (L.H.) (C-111669)	1
11	X-122591	SPACER (B-23175)	2
12	B-262845	ROLL - UPPER 6.50 EA. (MFG)	1
13	D-160727	SHAFT-UPPER ROLL (C-111670)	1
14	K-050726	ARM-TROUSER (R.H.) (A-017087)	2
15	X-128001	SPUD-SPRING (A-017087)	2
16	K-093123	SPRING "DAVLEY" #D-1214-26	2
17	K-094883	SHUNT-UPPER ROLL #MS-25 1/2 HEX BUSHING	1
18	K-161853	SHAFT-KEY-DR. DRIVE (B-18522)	1
19	K-091106	ENCODER "DYNAPAR" ROTAPULSER SERIES 50 - MODUL #E2P-ME-16-T-D	1
20	A-158573	PLATE-MTG. ROTAPULSER	1
21	K-091126	JUNT-UPPER ROLL #16-762 1/2 HEX 1 1/2 BRG.	1
22	B-160726	BRACKET-ACTUATOR & SPRINGS (CN)	1
23	C-081819	LEADING UPPER SUPPORT BRKT (CN)	1
24	A-178584	KEY - UPPER ROLL SUPPORT	1
25	X-128595	KEY - SHAFT SUPPORT (B-08346)	2
26	C-152470	BRACKET-EXT. REAR GUIDE MANDRELL	1

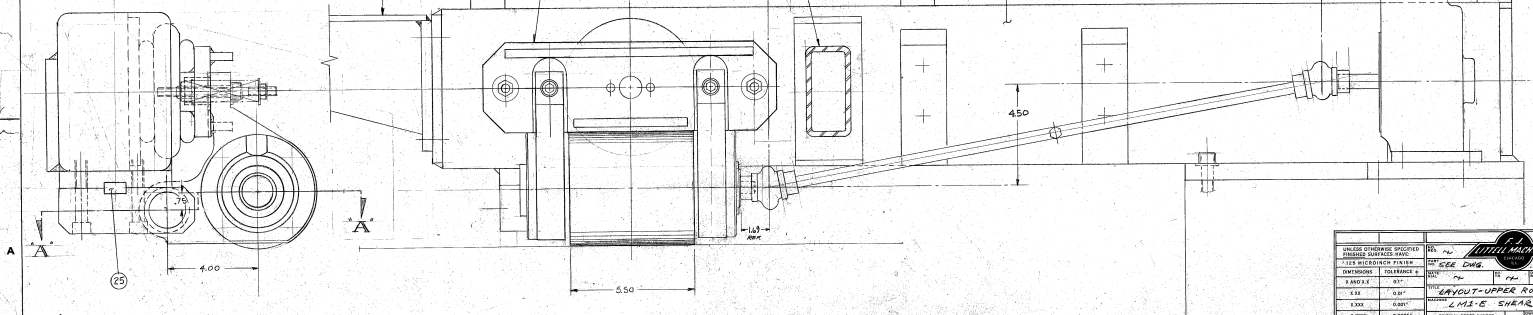
* ITEM NO 20 USED ON B7270-83

C



SECTION A-A

B



A

UNLESS OTHERWISE SPECIFIED DIMENSIONS ARE IN INCHES			REV. 1770	DATE 1770	BY 22
SEE DIMS			REV. 2518	DATE 25/07/83	BY 18
DESIGNED BY	INTEGRATED BY	REV. 1770	DATE 1770	BY 22	
DRAWN BY	CHECKED BY	REV. 2518	DATE 25/07/83	BY 18	
APPROVED BY		TITLE		PART NO.	
APPROVED BY		LAYOUT-UPPER ROLL		160720	
APPROVED BY		2-160720-83		REV. 1	
APPROVED BY		87270-83		REV. 1	
APPROVED BY		160720		REV. 1	