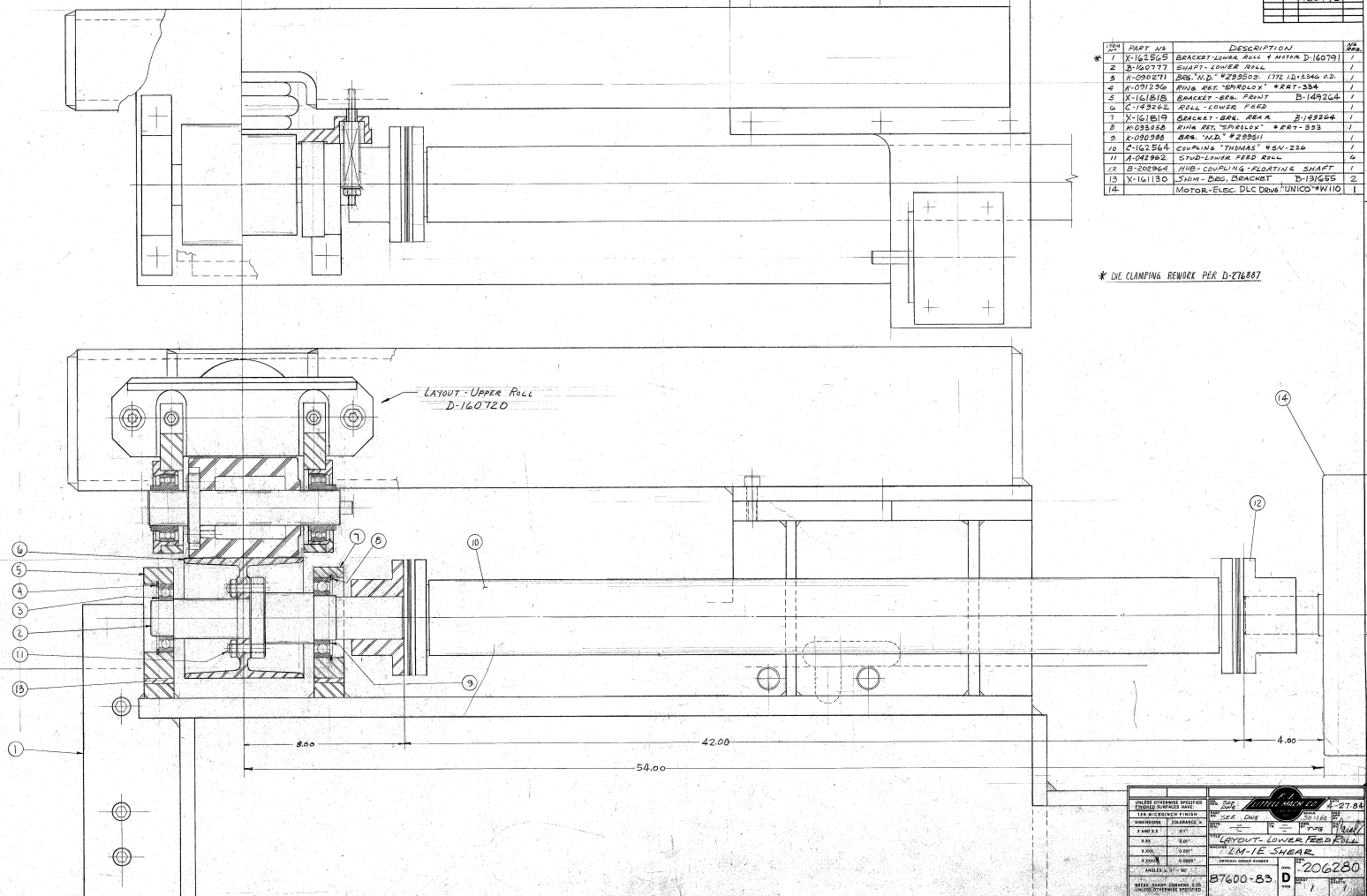


REV	DATE	BY	CHKD

ITEM	PART NO	DESCRIPTION	QTY
1	X-1625C5	BRACKET-LOWER ROLL # NOSTA D-16079	1
2	B-160777	SHAFT-LOWER ROLL	1
3	K-000271	ROD-1/2" X 22000 TITE 1D-15340 OD	1
4	A-091230	RIMB RET. "SPRLOD" #RT-334	1
5	X-161815	BRACKET-BRN FRONT B-149264	1
6	C-149262	ROLL-LOWER FEED	1
7	X-161815	BRACKET-BRN REAR B-149264	1
8	K-003652	RIMB RET. "SPRLOD" #RT-333	1
9	K-000288	BRN. NUT #22901	1
10	C-160266	COUPLING THIMBLE WSN-226	1
11	A-042962	STUD-LOWER FEED ROLL	6
12	B-202964	NIB-COUPLING-FLOATING SHAFT	1
13	X-161180	SHIM-BRN BRACKET D-151655	2
14		MOTOR-ELEC. DDC DRIVE UNICO #W110	1

* DE CLAMPING REMOVED PER D-276887



DALLEZ OVERHAUL SPECIFIC DIMENSIONS IN PARENTHESES (IN MILLIMETERS) FIRST	REV. NO. 1 DATE 01/14/84 BY WJG CHECKED WJG APPROVED WJG SPECIAL ORDER NUMBER PART NUMBER 206280 QUANTITY 1
PART NAME LAYOUT-LOWER FEED ROLL	PROJECT NUMBER 87600-83