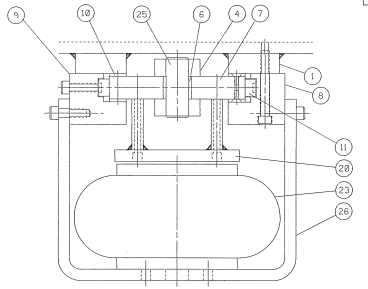
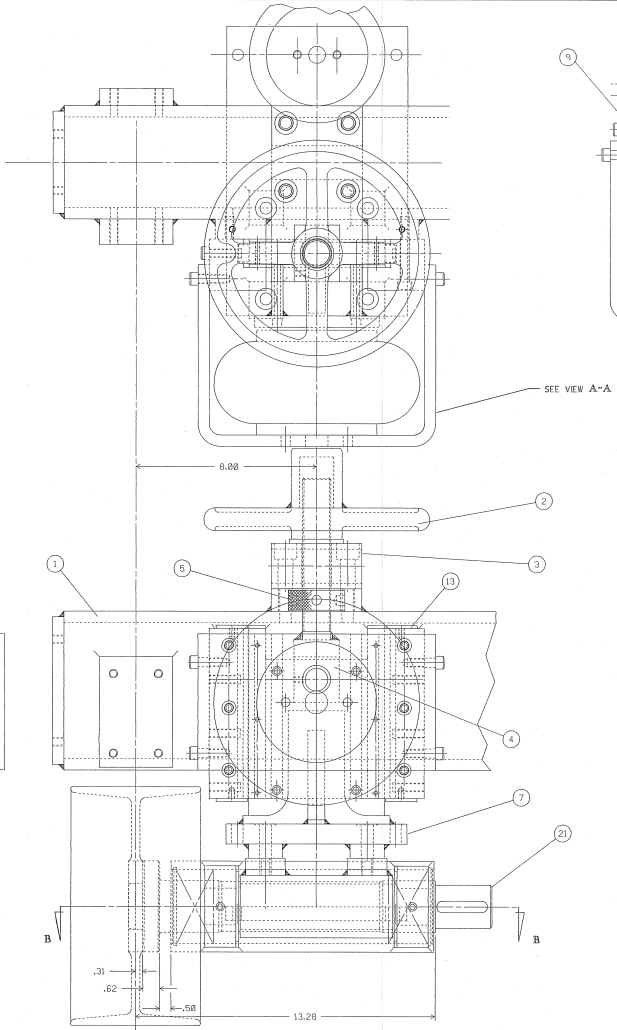
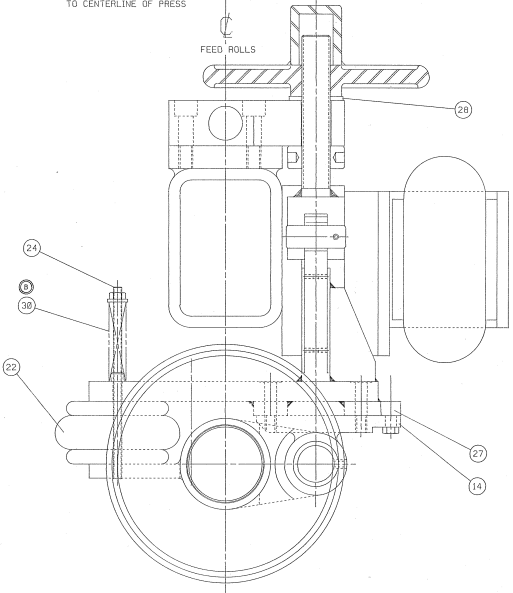


SECTION B-B

18.00  
 TO CENTERLINE OF PRESS  
 4.00



QTY	PART NO	DESCRIPTION	QTY
30	C-092454	SPRING - "DUALY" #1812-11 1.80 O.D. X .50 I.D. X 2.00 LG	1
29	A-842962	STUD	6
28	X-227985	WASHER-"OLLITE"-THRUST #TT-2304-82	1
27	C-218616	BEARING-CAM FOLLOWER-"MCGILL"-XCFE-7/8-B	2
26	B-238558	BRACKET-AIR ACTUATOR	1
25	X-865055	SHAFT-LIFTER	B-819037
24	X-109494	STUD-SPRING	A-817047
23	X-095517	ACTUATOR-FIRESTONE-AIRSTROKE #116	1
22	C-092871	ACTUATOR-FIRESTONE-AIR STROKE #16	1
21	X-218614	SHAFT-UPPER ROLL	B-118677
20	15		
19	C-094322	BEARING-"MCGILL" CAGEROLL #MR-36-RS	2
18	C-091796	RING-RETAINER-"SPIROLDEX" #RR1-303	4
17	X-218612	SHAFT-LIFTER 1.62 DIA. X 10.00 LG. B-064878	1
16	C-205654	BEARING-HOUSING-UPPER ROLL	1
15	C-093113	BUSHING-"OLLITE"-FF-2000 1.62 I.D. X 2.00 O.D. X 2.00 LG.	2
14	B-205652	BRACKET-SUPPORT-UPPER ROLL	1
13	A-205660	PLATE-RETAINER	4
12	X-093522	SPRING-"DUALY" #9-1284-11 .75 O.D. X .38 I.D. X 1.00 LG.	6
11	A-238568	BAR-CLAMPING-VERTICAL	2
10	A-205658	PLATE-WEAR-SLIDE	4
9	B-205656	GIB-SLIDE BRACKET-LEFT	1
8	B-205657	GIB-SLIDE BRACKET-RIGHT	1
7	C-205653	SLIDE-UPPER ROLL BRACKET	1
6	C-090350	BUSHING-"OLLITE"-#A-1212-2 1.00 I.D. X 1.25 O.D. X 1.00 LG.	1
5	A-205651	NUT-LOCK-UPPER ROLL	1
4	B-205650	ROD-ADJUSTING-UPPER ROLL	1
3	B-225649	BRACKET-HANDWHEEL SHAFT	1
2	B-225648	HANDWHEEL-ADJUSTING-UPPER ROLL	1
1	D-205647	GEAM-UPPER ROLL SUPPORT	1

DIMENSIONS UNLESS OTHERWISE SPECIFIED ARE IN INCHES DIMENSIONS IN PARENTHESES ARE IN MILLIMETERS TOLERANCES: FRACTIONS DECIMALS .XX .0050 .XXX .0025 .XXXX .0015 .XXXXX .0010 ANGLES ± 30° UNLESS SHOWN OTHERWISE	SEE DRAWING FOR DIMENSIONS ASS'Y-UPPER FEED ROLL BR-4 PRESS 87840-84 18365-85	DATE: 08-11-88 DESIG: D-216707 REV: 1 BY: JTB CHECKED: JTB APPROVED: JTB
--	---	---