

PLAN VIEW OF:
HIGH SPEED CONVEYOR
(UPPER LEVEL)

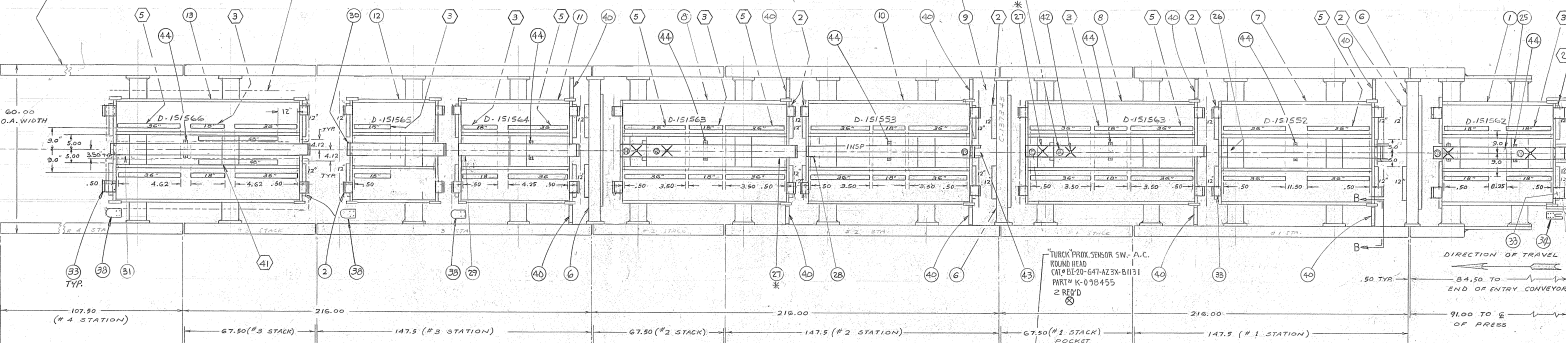
PLATE-BELT SUPPORT (SHIPPED ON OTHER FRAMES)
MAGNETS, PARALLEL WITH TRAVEL DIRECTION,
ARE MTD. UNDER BELT SUPPORT PLATES*
LEADING, PERPENDICULAR TO TRAVEL DIRECTION,
ARE MTD. ON "BELT SUPPORT FRAMES"

R. FOR BR-S TYPE DEFLECTOR
X-15156 (Q.M. 10, B-21861)

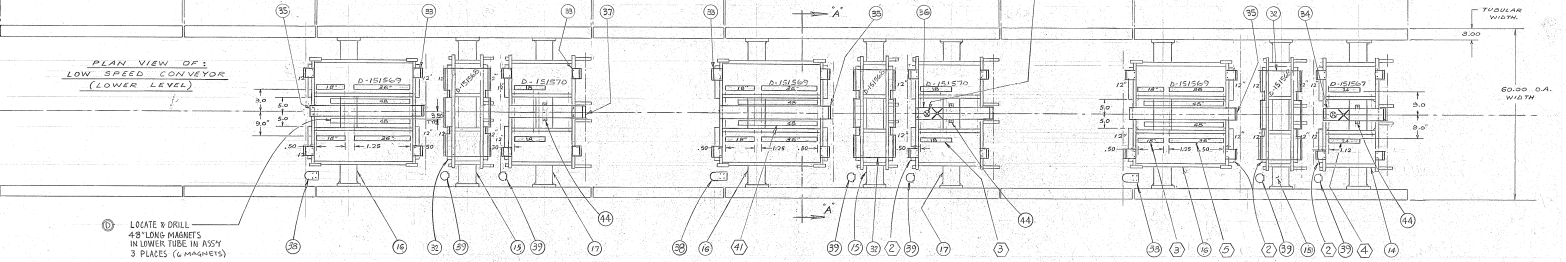
INSPECTION TRAY
LOCATED ABOVE THIS AREA
SEE DWG. 4-D-188027

TURKOK PROXIMITY SENSOR SWITCH-D.C.
ROUND HEAD, COIL # BE-25-GST-WPK-B114(D.C.)
PART # K-211254
2" X 8"

PROJ. LOCATIONS, ERS. NOV 1997
SHEET CLASSIFICATION
#1 OPEN PROJ. TO 4" WEAR 4.6" B1"
#1 HOLD PROJ. TO 4" HOLD PROJ. 33.15"
#1 HOLD PROJ. TO 4" GATE PROJ. 4.06"
#1 OPEN PROJ. TO "C. OPEN PROJ. 2.28"



PLAN VIEW OF:
LOW SPEED CONVEYOR
(LOWER LEVEL)

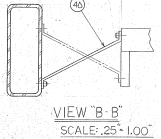
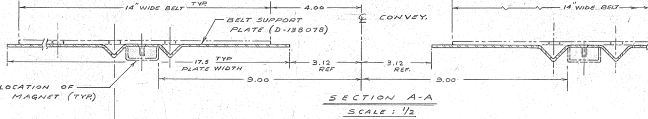


LOCATE 8 DRILL
48" LONG MAGNETS
IN WELLS THREE IN RISE
3 PLACES (4-MAGNETS)

LOCATION, LENGTH AND AMOUNT OF MAGNETS REQ'D IN "STACKER"

ITEM NO.	FRAME-BELT SUPPORT		PLATE-BELTS SUP. MTD. ON EACH FRAME		MAGNETS REQ'D FOR EACH FRAME (MAGNETS FROM "INDUSTRIAL MAG. INC.")		17 1/2"	18 1/4"	19 1/4"	20 1/4"	21 1/4"	22 1/4"	23 1/4"	24 1/4"	25 1/4"	26 1/4"	27 1/4"	28 1/4"	29 1/4"	30 1/4"	31 1/4"	32 1/4"	33 1/4"	34 1/4"	35 1/4"	
	DESCRIPTION	PART #	NO. REQ.	PART #	NO. REQ.	17 1/2"																				18 1/4"
1	SUPPORT-BELT CONV-ENTRY	D-15162	1	D-136255	2	2	2	2	2	2	2	2	2	2	2	2	2	2	2	2	2	2	2	2	2	2
2	SUPPORT-BELT ROLLER-UP	C-137843	3	C-137843	975	3	2	2	2	2	2	2	2	2	2	2	2	2	2	2	2	2	2	2	2	2
3	SUPPORT-BELT CONV. #1	D-15162	1	138908	90"	2	2	2	2	2	2	2	2	2	2	2	2	2	2	2	2	2	2	2	2	2
4	SUPPORT-BELT CONV. #2	D-15163	2	138907	97.50"	4	2	2	2	2	2	2	2	2	2	2	2	2	2	2	2	2	2	2	2	2
5	SUPPORT-BELT CONV. #3	D-15163	1	138907	97.50"	2	2	2	2	2	2	2	2	2	2	2	2	2	2	2	2	2	2	2	2	2
6	SUPPORT-BELT CONV. #4	D-15164	1	138909	67.5"	2	2	2	2	2	2	2	2	2	2	2	2	2	2	2	2	2	2	2	2	2
7	SUPPORT-BELT CONV. #5	D-15165	1	138911	51.75"	2	2	2	2	2	2	2	2	2	2	2	2	2	2	2	2	2	2	2	2	2
8	SUPPORT-BELT CONV. #6	D-15166	1	D-15078	107.5"	2	2	2	2	2	2	2	2	2	2	2	2	2	2	2	2	2	2	2	2	2
9	SUPPORT-BELT CONV. #7	D-15167	1	138913	81.75"	2	2	2	2	2	2	2	2	2	2	2	2	2	2	2	2	2	2	2	2	2
10	SUPPORT-BELT CONV. #8	D-15168	3	D-138653	45"	6	4	2	2	2	2	2	2	2	2	2	2	2	2	2	2	2	2	2	2	2
11	SUPPORT-BELT CONV. #9	D-15169	3	138910	67.5"	6	4	2	2	2	2	2	2	2	2	2	2	2	2	2	2	2	2	2	2	2
12	SUPPORT-BELT CONV. #10	D-15170	2	138912	39.25"	2	2	2	2	2	2	2	2	2	2	2	2	2	2	2	2	2	2	2	2	2
TOTAL AMOUNT OF MAGNETS						63	18	3	2	2	2	2	2	2	2	2	2	2	2	2	2	2	2	2	2	2

14	X-15158	PLATE-DEFLECTOR-SUPPORT	10
15	X-218624	BRACKET-MTG-TURKOK SENSOR A-206271	4
16	A-218627	BRACKET-MTG-TURKOK PROJ. SW	8
17	X-09303	MAGNET-INDUSTRIAL-26" X 48" X 48"	4
18	A-152939	BRACKET-STEADY CONV. ROLL	10
19	B-131827	SUPPORT BRG. DRIVE ROLL	12
20	B-138083	PLATE-BELT CONV. ROLL DRIVE	18
21	X-150337	DEFLECTOR-INDUSTRIAL-18" X 15" X 50"	1
22	X-218655	DEFLECTOR-INDUSTRIAL-LOW-B-218624	1
23	X-152405	DEFLECTOR-#101315	B-152402
24	B-218624	DEFLECTOR-INDUSTRIAL-ORDN. BLOWER	1
25	A-140047	PLATE-DEFLECTOR-CONV.	56
26	D-138650	PLATE-BELT SUPPORT	3
27	X-151595	DEFLECTOR-UPPER-27"	B-151592
28	X-151594	DEFLECTOR-UPPER-36"	B-151592
29	X-151593	DEFLECTOR-UPPER-45"	B-151592
30	X-218623	DEFLECTOR-UPPER-55"	B-152402
31	B-218619	DEFLECTOR-UPPER-65" X 2" W/3 PROX.	2
32	B-151592	DEFLECTOR-UPPER-#1	1
33	B-218618	DEFLECTOR-ENTREN W/2 PROXIMITIES	1



NOTE:
ITEM (4) IS TO BE LOCATED
IN EAST 1/2 EITHER OF THE
DESIGNATIONS SHOWN IN
(10) PLACES

ADDITIONAL MAGNET DATA:
VENDOR: INDUSTRIAL MAG. INC.
SERIES: MP-2000 W/SHOE CHANNEL TYPE
SIZE: 18" WIDE X 56" THICK

DATE	BY	CHKD	APP'D	NO.	REV.
11-15-93					

INDUSTRIAL MAG. INC.

INDUSTRIAL MAG. INC. LAYOUT-MAGNET LOCATIONS

1700-40 A STATION H.S. STACK

216735