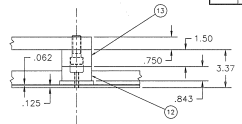
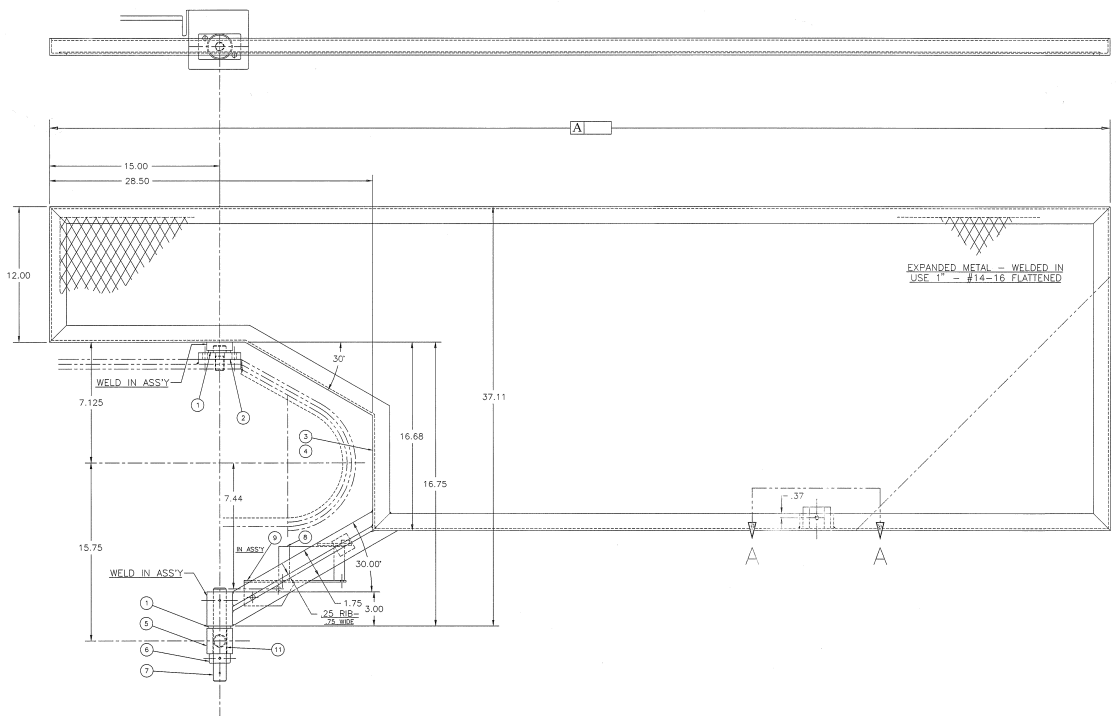
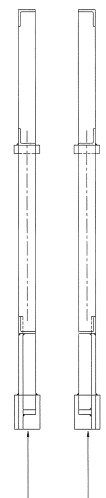


FORM NO. D-229674			
DATE	SIZE	ISS.	BY
8-21-81	151586	1/2	
8-28-81	QUARTER	1/2	



SECTION A-A



FEED DIRECTION	MIN FL	FRONT GUARD	REAR GUARD	A
R to L	18"	C-285886	C-285887	
	20"	C-229675	C-229676	60
L to R	18"	C-279487	C-279488	
	20"			
R to L	18"	C-297237	C-296078	78
L to R				

QTY	PART NO.	PART NO.	NO.
1	K-092300	BUSH - THRUST "OLITE" #TT-1303-2 (.75 x 1.38 x .12)	4
2	A-138881	PLATE - PIVOT ENTRY CONVEYOR	2
3	SEE	GUARD - HINGED ENTRY CONVEYOR - FRONT	1
4	CHART	GUARD - HINGED ENTRY CONVEYOR - REAR	1
5	A-138879	ANCHOR - PIVOT	2
6	K-090162	COLLAR - STL. "HALLOWELL" (.75 x 1.25 x .56)	2
7	B-138880	SHAFT - PIVOT GATE .75" DIA. x 5.50 LG.	2
8	K-090567	SW-LIM-"SO.D" 9007 - "CLASS" 9007 L.S. TYPE AW12-CA	1
9	A-151468	R - L BRACKET - LIMIT SWITCH	1
	A-288386	L - R	1
11	K-094729	BUSH - "OLITE" #A-839-7 (.753 x .878 x 1.50)	1
12	K-094730	MAGNET - "BUNTING" #OU-610	2
13	A-138883	BLOCK - MAGNET ENTRY CONVEYOR	2

LITTELL
 VERSION INTERNATIONAL GROUP INC.
 10000 QUAPP CONVEYOR BLVD
 MISSISSAUGA, ONTARIO L4X 1V7
 CANADA
 DATE: 11/20/80
 DRAWN BY: JJK
 CHECKED BY: JJK
 SCALE: 1/8" = 1"