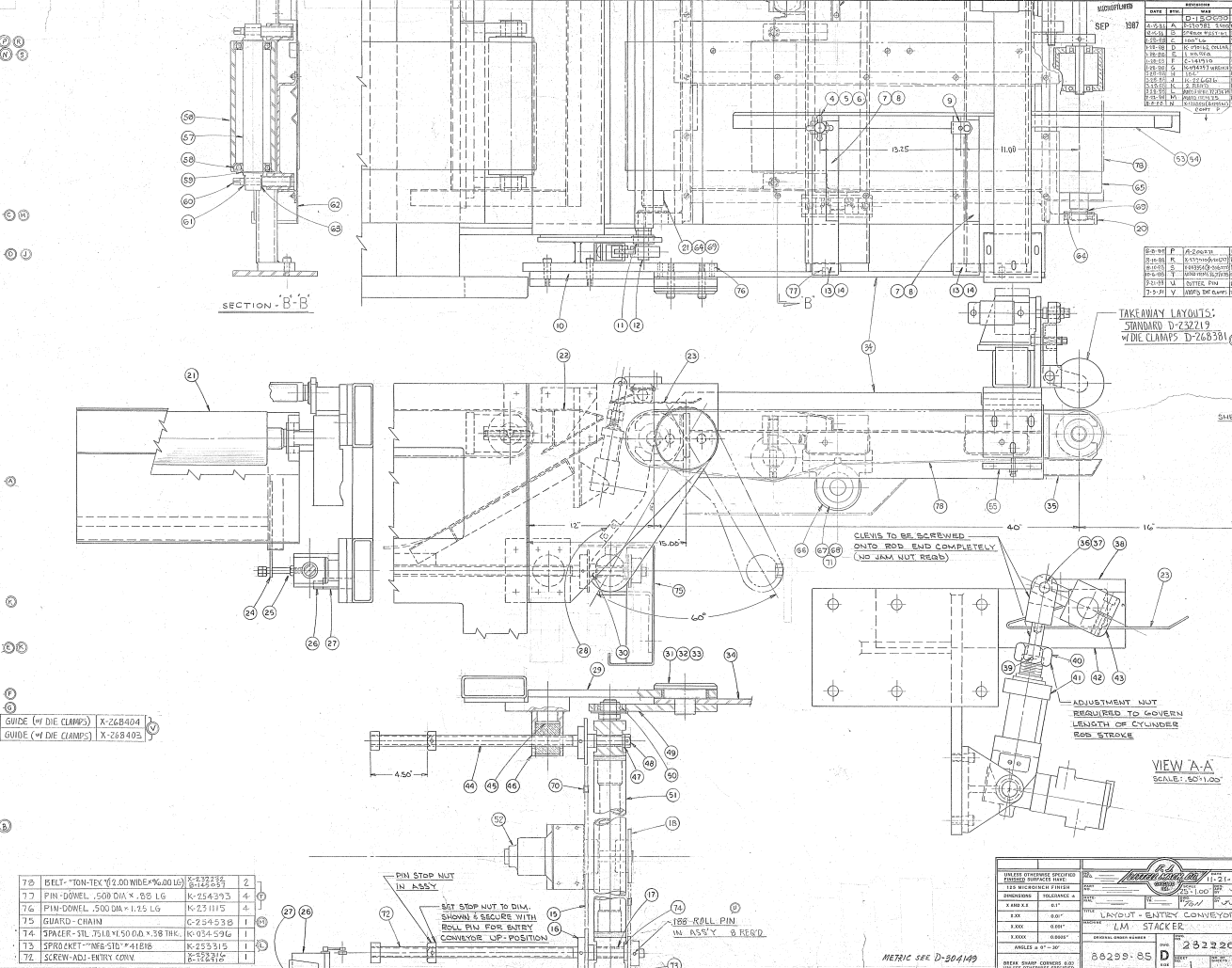


SYW	DESCRIPTION	PLANT NO.	QTY
1	SM TORCH PROX #202-674E5X	K-098455	1
2	BRACKET PROX. GATE & DEFLECT	K-098455	1
3	DEFLECTOR - PROXIMITY	K-098455	1
4	WOOD-HAND "BIRWELK" TUBES	K-098455	4
5	STUD-HAND KNOBS	A-049452	4
6	BUSHING-THRUST-OLITE-TY1002	K-094258	4
7	SCALE-FRONT	A-116055	2
8	SCALE-REAR	A-116056	2
9	POINTER - STOCK GUIDE	A-126722	4
10	SPACER - 1/2" x 5"	B-126716	2
11	BEARING-BALL "BALLMASTER" TM	K-098256	4
12	SHAFT - GATE PIVOT	C-116707	4
13	SUPPORT-SIDE GUIDE BAR	A-126721	4
14	BAR - STOCK GUIDE	B-126720	4
15	CHAIN-ROLLER-MFG'S STD #61	K-091589	4
16	SPROCKET-MFG'S STD #1824-B	K-094826	2
17	BUSHING-OLITE #F-1011-6	K-090264	4
18	SPROCKET-MFG'S STD #4135-1	K-253314	1
19	CONVEYOR SHAFT BOX & ENTRY	D-215147	2
20	SUPPORT-CONVEYOR ENTRY	D-230948	1
21	ASSY - ENTRY CONV. ROLL	K-098256	1
22	GUIDE-STATIONARY-ENTRY CONV.	D-215147	1
23	GATE-DEFLECTOR-INCLINE	C-126771	4
24	BAR-CHUTE SUPPORT	A-126724	2
25	SCREW-HEX HD CAP - 500-19-1550	K-090000	2
26	SW LING "50" T "90" #25482-CA1	K-079506	1
27	PLATE-TAPPING-LS	B-126725	1
28	BLOCK-STOP-ENTRY CONV.	A-126510	2
29	PLATE-ENTRY CONV. SUPPORT	C-141902	2
30	BEG-THRUST ALTHA #E-5	K-090110	2
31	BUSHING-OLITE "AL-6500 (CAP)	A-207428	2
32	WASHER-BRASS - 1/2" x 4" x 6"	B-126726	4
33	RETAINER RING	B-126705	2
34	PLATE-ENTRY CONV. SIDE SUPP	C-141902	2
35	GUARD-ENTRY CONV.	D-237177	1
36	PIN-CYL. CURVE'S-GATE	K-098256	1
37	RING-BELT-WALDES" #500-50	K-090922	8
38	BAR-TIE BRG.	A-126718	8
39	PLUG-BRASS	A-126741	1
40	NUT-HEX ADJUSTMENT	A-148225	1
41	CYL-BELOW'S WASHDR "880-902"	K-079506	1
42	BRACKET-TIE (FRONT)	C-141648	4
43	ARM-GATE	C-091228	4
44	SCREW-ADJ. ENTRY CONV.	K-098256	1
45	INSERT-BRE ADJ. SCREW	A-126711	2
46	BRACKET-INSERT	B-141915	2
47	WASHER-STEEL-TS 10 x 12000 x 12	K-090000	1
48	NUT-CASTE-HEX FULL MFG'S STD #6	K-090203	1
49	ARM-ENTRY CONV. BECT.	B-141914	2
50	BEARING-SM "ER-20"	K-090498	2
51	SHAFT-ADJ. SCREW ENTRY CONV.	C-251824	1
52	MOTOR-AIR GATE #4AM-RV-TS-GR2	K-251829	1
53	GUIDE-ENTRY-FRONT (STANDARD)	X-126756	1
54	GUIDE-ENTRY-REAR (STANDARD)	X-126755	1
55	BLOCK-SUPPORT-BEAM-ADJ.	B-237474	2
56	ROLL-1DLER	B-111644	2
57	SHAFT-DUAL CONVEYOR ROLL	C-215397	2
58	BRG-BALL "NO" #29950	K-090272	4
59	RING-RET "SPIRALOX" F810K	K-092453	4
60	SCREW-TAKE UP IDLER ROLL	A-230938	4
61	RING-RET "TRUAC" #500-62	K-090923	4
62	PLATE-BELT SUPPORT	D-126415	2
63	BUSH-THRUST-OLITE-TY1002-1	K-094441	4
64	BRG-BALL "NO" #29950	K-090272	4
65	ROLL-1DLER-CONVEYOR	C-290932	1
66	ASSY-1DLER ROLL-LOWER	C-290934	1
67	HOUSING-BEARING	D-227067	2
68	BRG-BALL "NO" #29950	K-091472	2
69	SPACER-CONVEYOR ROLL	K-098256	4
70	LINK-MFG'S STD #TH	K-232317	1
71	LINK-RET. WASHDR #500-281	K-079523	2



SHEET 04 OF 05  
SEP 1987

REV	BY	CHK	DATE
001	...	...	...
002	...	...	...
003	...	...	...
004	...	...	...
005	...	...	...
006	...	...	...
007	...	...	...
008	...	...	...
009	...	...	...
010	...	...	...
011	...	...	...
012	...	...	...
013	...	...	...
014	...	...	...
015	...	...	...
016	...	...	...
017	...	...	...
018	...	...	...
019	...	...	...
020	...	...	...
021	...	...	...
022	...	...	...
023	...	...	...
024	...	...	...
025	...	...	...
026	...	...	...
027	...	...	...
028	...	...	...
029	...	...	...
030	...	...	...
031	...	...	...
032	...	...	...
033	...	...	...
034	...	...	...
035	...	...	...
036	...	...	...
037	...	...	...
038	...	...	...
039	...	...	...
040	...	...	...
041	...	...	...
042	...	...	...
043	...	...	...
044	...	...	...
045	...	...	...
046	...	...	...
047	...	...	...
048	...	...	...
049	...	...	...
050	...	...	...
051	...	...	...
052	...	...	...
053	...	...	...
054	...	...	...
055	...	...	...
056	...	...	...
057	...	...	...
058	...	...	...
059	...	...	...
060	...	...	...
061	...	...	...
062	...	...	...
063	...	...	...
064	...	...	...
065	...	...	...
066	...	...	...
067	...	...	...
068	...	...	...
069	...	...	...
070	...	...	...
071	...	...	...

D-232220  
86229-85  
1