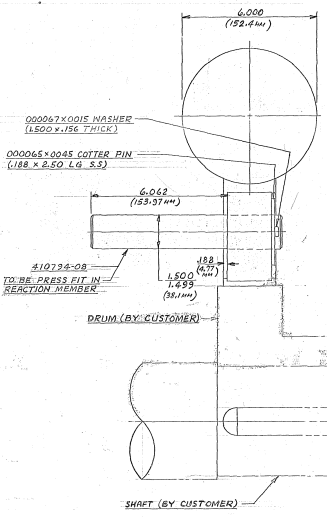
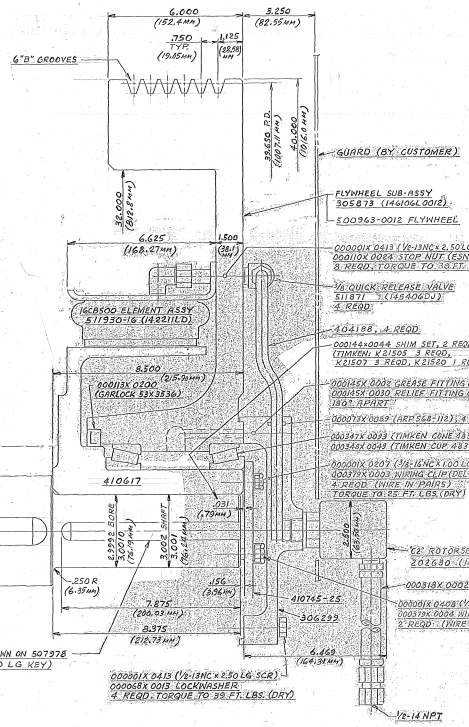


VIEW OF BRAKE
SCALE: NONE



DRUM (BY CUSTOMER)

SHAFT (BY CUSTOMER)



GUARD (BY CUSTOMER)

FLYWHEEL SUB-ASSY
305873 (146106.0018)
500963-0018 FLYWHEEL

00001X 0413 (1/2-13NC X 2.50 LG HEX HD SCR)
00001X 0008 (TOR. NUT (2.500 FINE THD))
4 REOD, TORQUE TO 38 FT. LBS (DRY)

1/2-10NC RELEASE VALVE
511871 (145406DU)
4 REOD

000144-0044 SHIM SET 4 REOD
00001X 0250 (1.8500)
00001X 0250 (1.8500) 4 REOD

00001X 0005 (GRASS FITTING (ALUMINUM))
00001X 0005 (RELIEF FITTING (ALUMINUM))
180° FLIPKEY

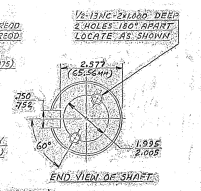
00001X 0049 (HEX S4-112) 4 REOD
00001X 0049 (TIMKEN ONE 28333) 2 REOD
00001X 0049 (TIMKEN ONE 28333) 2 REOD

00001X 0107 (1/2-13NC X 2.50 LG SCR)
00001X 0005 (WIRING CLIP (DELCO DL35))
4 REOD (WIRE IN PAIRS)
TORQUE TO SET FT. LBS (DRY)

00001X 0408 (1/2-13NC X 2.50 LG SCR)
00001X 0005 (WIRING CLIP (DELCO DL35))
4 REOD (WIRE IN PAIRS)
TORQUE TO SET FT. LBS (DRY)

00001X 0002
00001X 0408 (1/2-13NC X 2.50 LG SCR)
00001X 0005 (WIRING CLIP (DELCO DL35))
4 REOD (WIRE IN PAIRS)
TORQUE TO SET FT. LBS (DRY)

00001X 0413 (1/2-13NC X 2.50 LG SCR)
4 REOD, TORQUE TO 39 FT. LBS (DRY)



END VIEW OF SHAFT

REV		DATE	BY	CHKD
1	INITIALS	DATE	INITIALS	DATE
<p>BR-5 SHC-22</p> <p>89210-88</p> <p>D 251780</p>				

F. J. LITTELL MACH. CO.
CHICAGO, IL

DO NOT SCALE THIS DRAWING

	DATE: 11/27/80 TIME: 10:00 AM DRAWN BY: J. LITTELL CHECKED BY: J. LITTELL APPROVED BY: J. LITTELL TITLE: 16C6500 CLUTCH & 15CTE237 BRAKE FOR LM-1 SHEAR (REF. PSPA 8)	FILE NO.: 89210-88 PROJ. NO.: 251780 SHEET NO.: 1 OF 1	
	PART NAME: 16C6500 CLUTCH & 15CTE237 BRAKE FOR LM-1 SHEAR (REF. PSPA 8)	QUANTITY: 1	MATERIAL: 304 STAINLESS STEEL
	SPEC. DETAIL: 304 STAINLESS STEEL	TOLERANCES: UNLESS OTHERWISE SPECIFIED DIMENSIONS: FRACTIONS TO NEAREST 1/16 INCH DECIMALS TO NEAREST 0.0005 INCH ANGLES: TO NEAREST 5 MINUTES	FINISH: POLISHED
	WEIGHT: 1.25 LBS VOLUME: 0.0005 CU IN SURFACE AREA: 0.0005 SQ IN	PART NO.: 850207 QTY: 1 DATE: 11/27/80	PART NO.: 10207 QTY: 1 DATE: 11/27/80