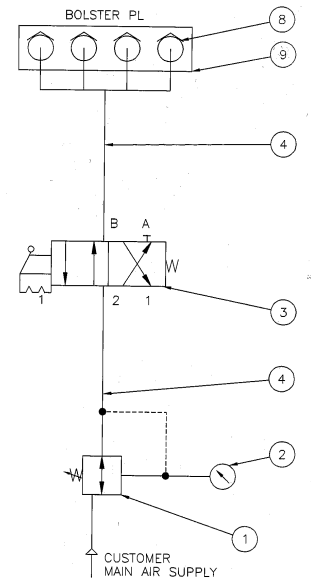
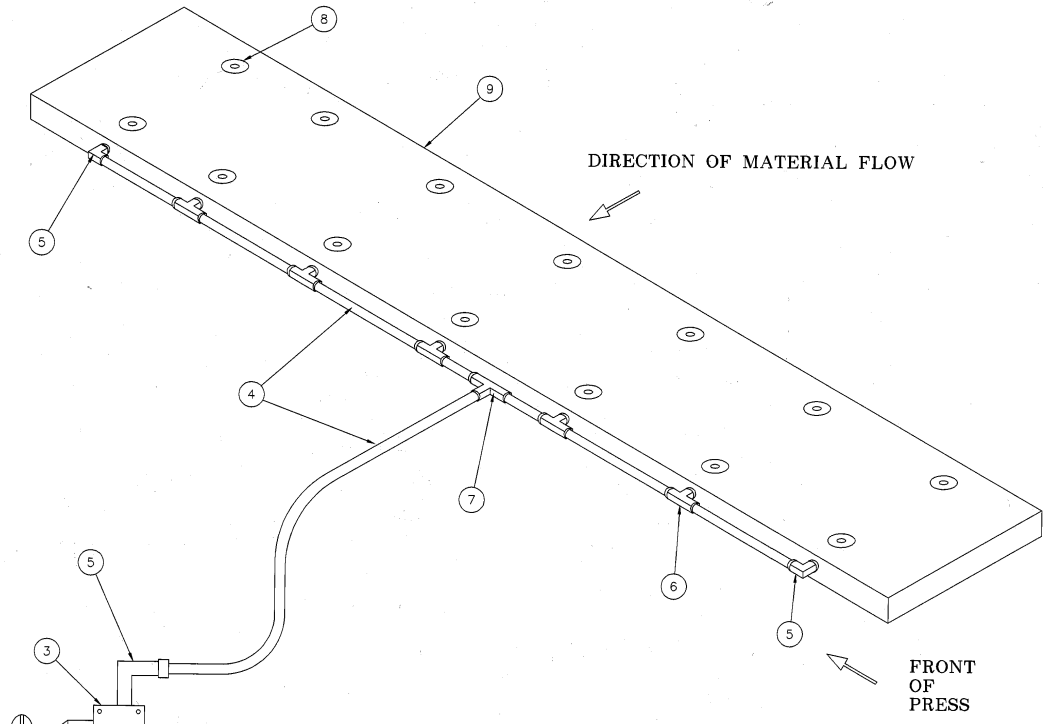


FLNG LOCATION C-247962			
DATE	SYM	WAS	BY
12/18/87	A	K-091853	TJG



PICTORIAL DIAGRAM-PNEUMATIC

GRAPHICAL DIAGRAM-PNEUMATIC

- LITTELL TO PIPE BOLSTER COMPLETE AS SHOWN.
- TUBING BETWEEN BOLSTER, AIR VALVE AND REGULATOR TO BE SHIPPED AS A SEPARATE ITEM FOR MOUNTING BY CUSTOMER. (APPROX. 4 FT. LG TUBING)

ITEM	PART NO.	DESCRIPTION	QTY
9	000000	PLATE-BOLSTER (CUSTOM DESIGNED PER CUSTOMERS DIE MOUNTING REQUIREMENT)	1
8	097023	VALVE-BALL "GITS" STYLE S #00553 .125 NPT	14
7	097398	TEE-UNION "PARKER"-INTRU-LOK #4-4-4-SB12-B .25" TUBING PORTS	1
6	097399	TEE- MALE BRANCH-"PARKER" INTRU-LOK #4-4-4-SB12-B .250 PORTS & .250" PT	5
5	237240	ELBOW-"PARKER-HANNIFIN"-MALE #4-4CB12-B .250 TUBE TO .250" NPT	6
4	227179	TUBING-"POLYPENCO" NYLAFLOW PRESSURE PLASTIC TUBING .250- O.D. X 8 FT. LG.	1
3	091224	VALVE-"HANNIFIN" AIR STRAIGHT HANDLE LOCK TYPE CC5M3-25-S	1
2	093948	GAUGE-"NORGREN" AIR #18-013-209 0-60 PSI	1
1	093934	REGULATOR-"NORGREN" #R11-200-RNL .250" NPT 2-125 PSI	1

(A)

COPYRIGHT VERSON INTERNATIONAL GROUP INC. ALL RIGHTS RESERVED. THE DOCUMENT CONTAINS UNPUBLISHED CONFIDENTIAL AND PROPRIETARY INFORMATION OF VERSON INTERNATIONAL GROUP INC. NO DISCLOSURE OR USE OF ANY PORTIONS OF THESE MATERIALS MAY BE MADE WITHOUT THE EXPRESS WRITTEN CONSENT OF VERSON INTERNATIONAL GROUP INC.

CHKD 08/10/00	TJG	LITTELL
DRN 08/10/87	RU	
DES.		
DATE	NAME	VERSON INTERNATIONAL GROUP INC.
TITLE LAYOUT-AIR FLOAT BOLSTER(MECH/PNEU)		PART NO. C-247962
MACHINE SCROLL SHEETING LINE		SHT 1 OF 1
ORIG. NO. 88090-78	SCALE: NONE	