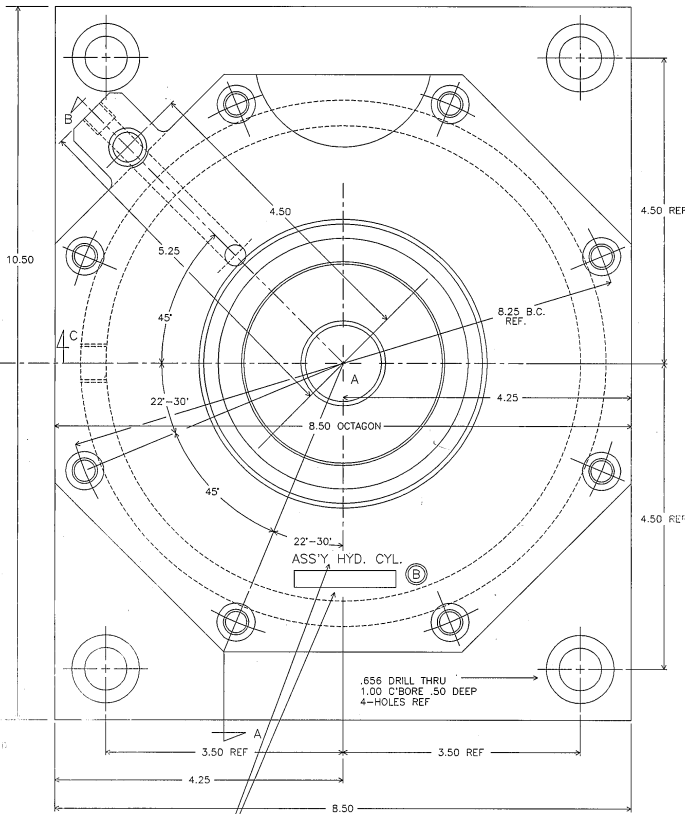
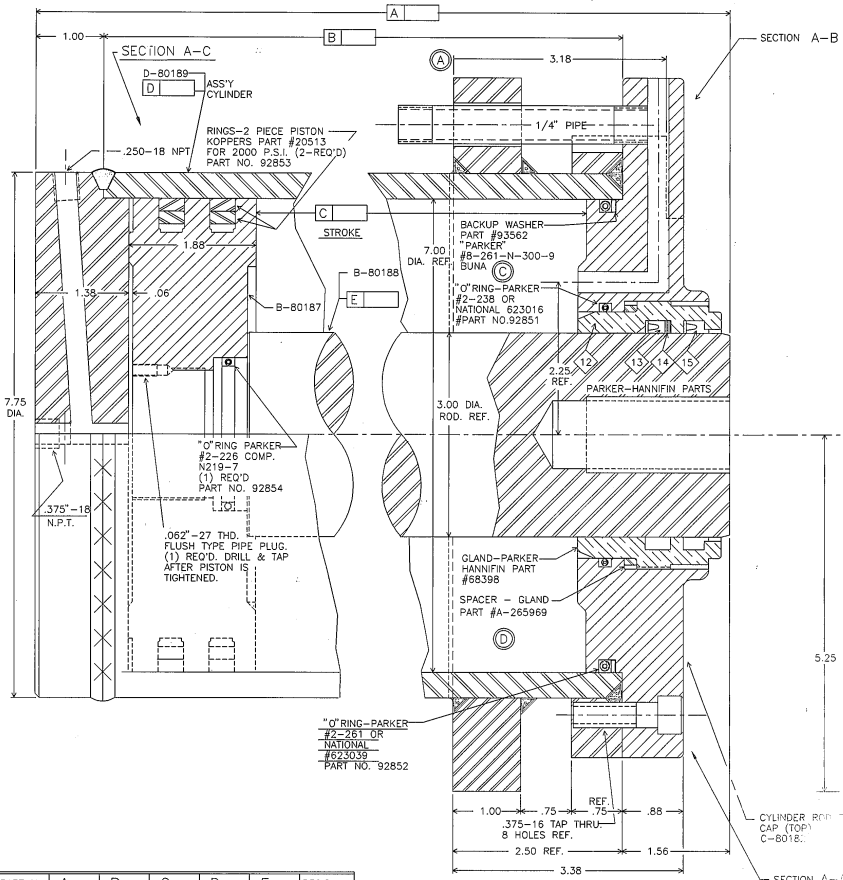


DATE	SYM	WAS	BY
05/19/71		CHARTED	TEG
07/11/74	A	ADDED	GAU
06/04/76	B	ADDED	PC
06/23/78	C	ADD CAT#	JUG
08/16/88		REDRAWN	CZ



PART No	A	B	C	D	E	REO'D
080180	23.50	20.94	18.125	080189	080188	
087410	29.50	26.94	24.125	087415	087411	
111756	26.50	23.94	21.125	110798	111757	
127406	12.50	9.94	7.125	129576	129575	
148200	20.88	18.32	15.50	148201	148202	
304582	27.50	24.94	22.125	305903	304584	

PARKER-HANNIFIN PARTS					
ITEM	PART NO.	DESCRIPTION	LITTELL PART NO.	NO. REQ'D PER UNIT	REO'D
12	68398	GLAND	92846	1	
13	49009-0300	LIPSEAL, GLAND	92848	1	
14	71254-0300	BACK-UP WASHER	92850	1	
15	47000-0300	WIPERSEAL	92849	1	

STAMP PART NO

COPYRIGHT VERSON INTERNATIONAL GROUP INC. ALL RIGHTS RESERVED. THIS DOCUMENT CONTAINS UNPUBLISHED CONFIDENTIAL AND PROPRIETARY INFORMATION OF VERSON INTERNATIONAL GROUP INC. NO DISCLOSURE OR USE OF ANY PORTIONS OF THESE MATERIALS MAY BE MADE WITHOUT THE EXPRESS WRITTEN CONSENT OF VERSON INTERNATIONAL GROUP INC.

Chkd: 11/01/89 TJG  
 DPN: 08/14/89 RUL  
 DES:

**LITTELL**  
 VERSON INTERNATIONAL GROUP INC.

TITLE ASSEMBLY - CYLINDER  
 PACKAGE: 5284 THRU 5288  
 PART NO. C-080180  
 SCALE: 1:1