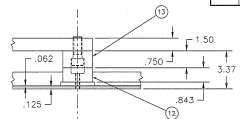
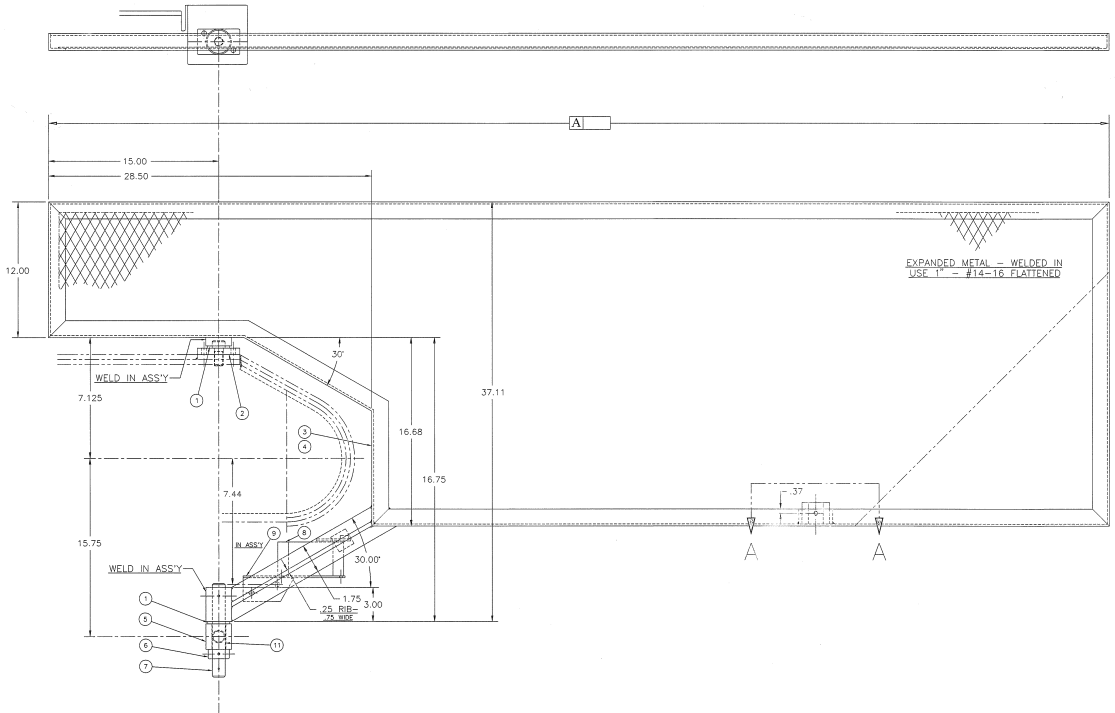
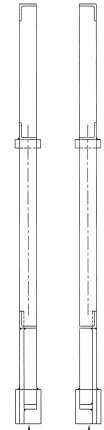


REVISED D-229674			
DATE	BY	CHKD	BY
8-21-85	LS1688	JVG	
8-28-85	QUINTEZ	JVG	



SECTION A-A



FEED DIRECTION	MIN FL	FRONT GUARD	REAR GUARD	A
R to L	18'	C-285886	C-285887	60
	20'	C-229675	C-229676	
L to R	18'	C-279487	C-279488	78
	20'			
R to L	18'	C-297237	C-296078	
L to R				

QTY	PART NO.	PART NO.	QTY
1	K-092300	BUSH - THRUST "OLITE" #TT-1303-2 (.75 x 1.38 x .12)	4
2	A-138881	PLATE - PIVOT ENTRY CONVEYOR	2
3	SEE	GUARD - HINGED ENTRY CONVEYOR - FRONT	1
4	CHART	GUARD - HINGED ENTRY CONVEYOR - REAR	1
5	A-138879	ANCHOR - PIVOT	2
6	K-090162	COLLAR - STL "HALLOWELL" (.75 x 1.25 x .56)	2
7	B-138880	SHAFT - PIVOT GATE .75" DIA x 5.50 LG.	2
8	K-090567	SW-LIM-"SQ.D" 9007 - "CLASS" 9007 L.S. TYPE AW12-CA1	1
9	A-151468	R - L BRACKET - LIMIT SWITCH	1
	A-288386	L - R	1
11	K-094729	BUSH - "OLITE" #AA-839-7 (.753 x .878 x 1.50)	1
12	K-094730	MAGNET - "BLUNTING" #CU-610	2
13	A-138883	BLOCK - MAGNET ENTRY CONVEYOR	2

UNLESS SHOWN OTHERWISE TO BE MADE IN THE U.S.A. CONVEYOR SYSTEMS INTERNATIONAL GROUP INC. ALL RIGHTS RESERVED. THIS DOCUMENT IS THE PROPERTY OF CONVEYOR SYSTEMS INTERNATIONAL GROUP INC. AND IS TO BE KEPT IN CONFIDENCE. IT IS TO BE RETURNED TO THE OFFICE OF ORIGIN UPON REQUEST. NO REPRODUCTION OR TRANSMISSION IN ANY FORM OR BY ANY MEANS, ELECTRONIC OR MECHANICAL, INCLUDING PHOTOCOPYING, RECORDING, OR BY ANY INFORMATION STORAGE AND RETRIEVAL SYSTEM, IS PERMITTED WITHOUT THE WRITTEN PERMISSION OF CONVEYOR SYSTEMS INTERNATIONAL GROUP INC.

125 WOODLAWN AVENUE
 WASHINGTON, D.C. 20004
 (202) 462-8800

CONV. # 2-280
 DATE 8-21-85
 DESIGNED BY JVG
 DRAWN BY JVG
 CHECKED BY JVG
 DATE 8-21-85
 SCALE 1/8" = 1'-0"

LITTELL
 CONVEYOR SYSTEMS INTERNATIONAL GROUP INC.

PROJECT NO. D-229674
 SHEET NO. 1 OF 1