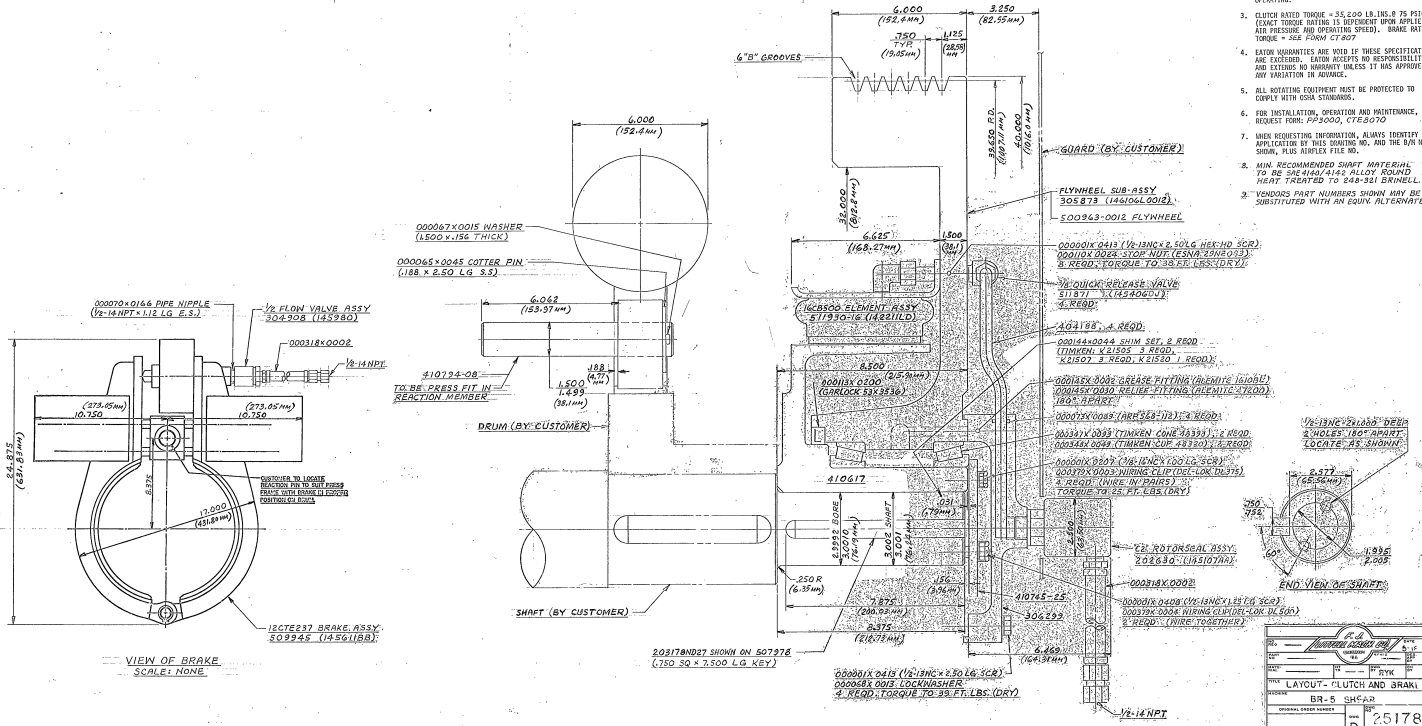


1. TIMBER BEARING CORES MAY BE HEATED IN OIL TO SOFTEN. MAX. TO EDGE ASSEMBLY.
2. TIMBER BEARINGS IN FLYWHEEL TO BE SHIM ADJUSTED TO ALLOW FOR .005 TO .007 AXIAL MOVEMENT WHILE OPERATING.
3. CLUTCH RATED TORQUE = 35,200 LB. IN. @ 75 PSI (EXACT TORQUE RATING IS DEPENDENT UPON APPLIED AIR PRESSURE AND OPERATING SPEED). BRAKE RATED TORQUE = 348 FPM @ CT 807.
4. LUBRICATION POINTS ARE MADE TO THESE SPECIFICATIONS AND EXCEEDED. EXHAUST ACCEPTS NO RESPONSIBILITY FOR EXCESSIVE WEAR UNLESS IT HAS APPROVED ANY VARIATION IN ADVANCE.
5. ALL MOUNTING EQUIPMENT MUST BE PROTECTED TO COMPAT WITH COAR STORAGE.
6. FOR INSTALLATION, OPERATION AND MAINTENANCE, REQUEST FORM: PPS3000, CTR8070.
7. WHEN REQUESTING INFORMATION, ALWAYS IDENTIFY THE APPLICATION BY THIS DRAWING NO. AND THE BUY NO. SHOWN, PLUS AIRPLEX FILE NO.
8. MIN. RECOMMENDED SHIM MATERIAL TO BE 304L/316L ALLOY BRASS THAT TREATED TO 240-351 BRINELL.
9. DIMENSIONS PART NUMBERS SHOWN MAY BE SUBSTITUTED WITH AN EQUIV. ALTERNATE.



REV	DATE	BY	CHK	APP	DESCRIPTION
1					LAYOUT, CLUTCH AND BRAKE
BR-5 SHEAR					
ORIGINAL ORDER NUMBER					
89210-88					251780

DO NOT SCALE THIS DRAWING

THIS DRAWING IS THE PROPERTY OF AIRPLEX PRODUCTION CO. IT IS TO BE USED ONLY FOR THE PURPOSES SPECIFIED HEREIN. IT IS TO BE KEPT IN THE ORIGINAL UNALTERED FORM AND IS TO BE RETURNED TO AIRPLEX PRODUCTION CO. UPON REQUEST. ANY REPRODUCTION OR ALTERATION OF THIS DRAWING WITHOUT THE WRITTEN PERMISSION OF AIRPLEX PRODUCTION CO. IS PROHIBITED. THE USER ASSUMES ALL LIABILITY FOR THE USE OF THIS DRAWING. THE USER SHALL BE RESPONSIBLE FOR OBTAINING ALL NECESSARY PERMITS AND APPROVALS FOR THE USE OF THIS DRAWING. THE USER SHALL BE RESPONSIBLE FOR OBTAINING ALL NECESSARY PERMITS AND APPROVALS FOR THE USE OF THIS DRAWING. THE USER SHALL BE RESPONSIBLE FOR OBTAINING ALL NECESSARY PERMITS AND APPROVALS FOR THE USE OF THIS DRAWING.

89210-88

251780

16C800 CLUTCH & 12CT237 BRAKE FOR LM-1 SHEAR (REF: PSPA 6)

830207

10207

16C800

12CT237

10207

16C800

12CT237

10207