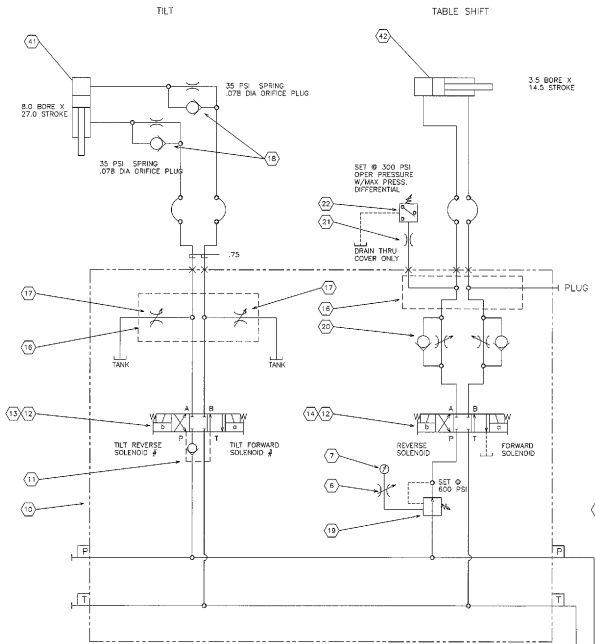
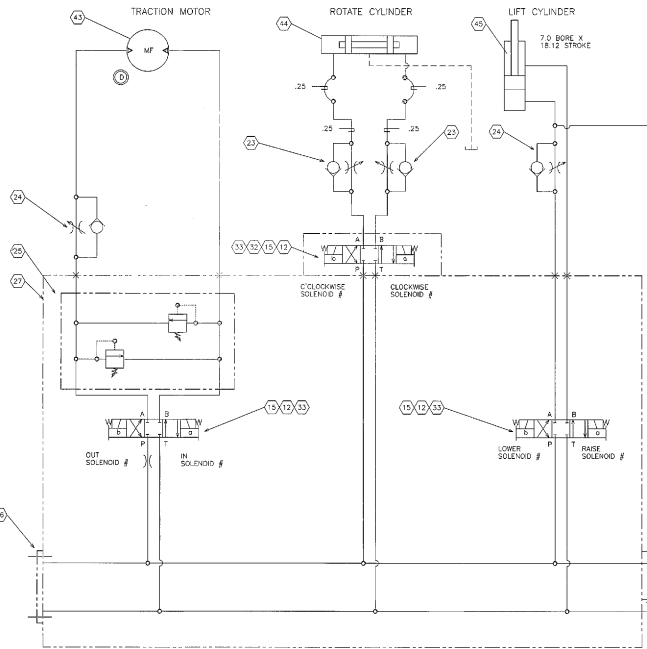


ITEM		DESCRIPTION		QUANTITY	
NO.	REV.	BY	DATE	QTY	UNIT
1	1
2	1
3	1
4	1
5	1
6	1
7	1
8	1
9	1
10	1
11	1
12	1
13	1
14	1
15	1
16	1
17	1
18	1
19	1
20	1
21	1
22	1
23	1
24	1
25	1
26	1
27	1
28	1
29	1
30	1
31	1
32	1
33	1
34	1
35	1
36	1
37	1
38	1
39	1
40	1
41	1
42	1
43	1
44	1
45	1
46	1
47	1
48	1
49	1
50	1
51	1
52	1
53	1
54	1
55	1
56	1
57	1
58	1
59	1
60	1
61	1
62	1
63	1
64	1
65	1
66	1
67	1
68	1
69	1
70	1
71	1
72	1
73	1
74	1
75	1
76	1
77	1
78	1
79	1
80	1
81	1
82	1
83	1
84	1
85	1
86	1
87	1
88	1
89	1
90	1
91	1
92	1
93	1
94	1
95	1
96	1
97	1
98	1
99	1
100	1

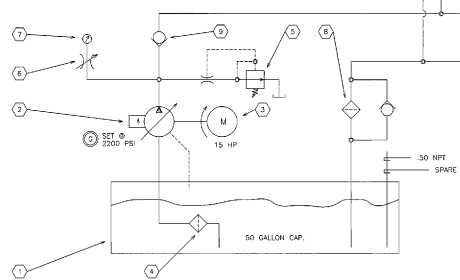
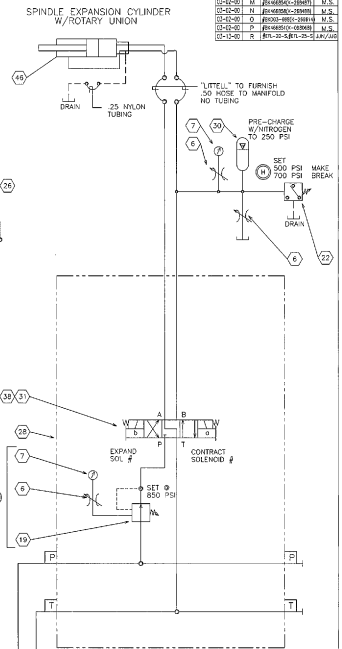
COIL DOWNENDER



#S250 COIL CAR W/ROTATING SADDLE



#S250 AC REEL



NOTE:
WHEN SOLENOID "A" IS ENERGIZED, FLOW IS ALWAYS P → A.
WHEN SOLENOID "B" IS ENERGIZED, FLOW IS ALWAYS P → B.

VALVES RATED 24 V.D.C.

REPRODUCED BY PERMITS, REGION INTERNATIONAL, CORP AND ALL RIGHTS RESERVED. THIS DOCUMENT CONTAINS CONFIDENTIAL AND PROPRIETARY INFORMATION OF LITTELL. ANY REPRODUCTION, STORAGE, TRANSMISSION OR DISTRIBUTION OF THIS DOCUMENT WITHOUT THE WRITTEN PERMISSION OF LITTELL IS STRICTLY PROHIBITED. CONTACT LITTELL FOR PERMISSIONS.

DATE: 02/25/91
DRAWN BY: [Name]
CHECKED BY: [Name]
DESIGN: [Name]

LITTELL

TITLE: POWER UNIT - HYDRAULIC
PART NO.: D-264411
MACHINE: SELF-22 SCHOOL SHEETING LINE
DATE: [Date]
SCALE: [Scale]