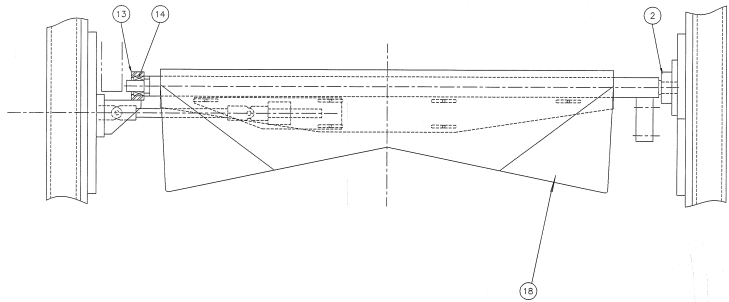
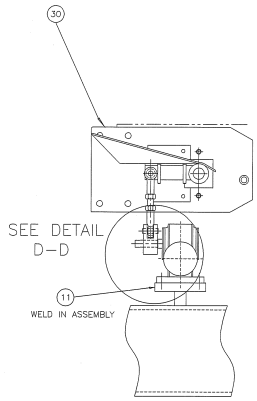
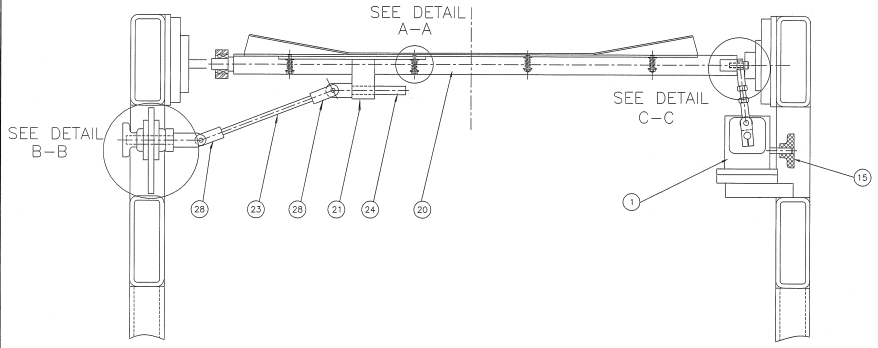


DATE	SYM	WAS	BY
		D-166924	

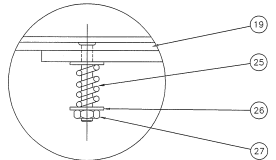


REAR SIDE FRAME

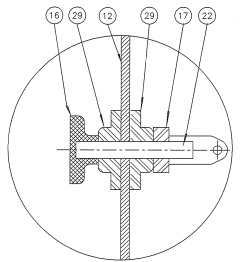
FRONT SIDE FRAME



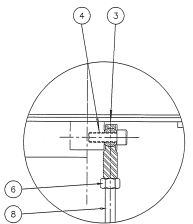
ITEM	PART #	DESCRIPTION	(DWG #)	TOTAL QUANTITY
1	K-064749	REDUCER "BOSTON GEAR WORK" #2134 50:1		1
2	K-093278	BEARING "SEAMASTER" #8FT-16 (1.00 DIA)		1
3	K-094751	ROD END "SPHEROD" #FTL-TH (438-20 LH) FEMALE		1
4	K-227234	SCREW SOCKET HEAD CAP (438-14 X 1.25 LG.)		1
5	K-093179	ROD END "SPHEROD" #FTB-TN (438-20 RH) FEMALE		1
6	K-232255	NUT (438-20 LH)		1
7	K-232306	NUT (438-20 RH)		1
8	B-136630	ROD CONNECTING (438-20 X 5.25 LG.)		1
9	B-288634	CLERIS PIVOT		1
10	X-158631	ROD PIVOT (438 X 1.35 LG.)	B-010569	1
11	B-288655	BRACKET - REDUCER MOUNTING		1
12	B-288640	PLATE - BEARING		1
13	B-136633	BRACKET - BEARING PIVOT		1
14	K-094750	BEARING "SPHEROD" #COM-16		1
15	K-094752	KNOB "BALCRANK" #H2306 (.500 DIA BORE)		1
16	K-097255	KNOB "BALCRANK" #H2306 (1.750 DIA BORE)		1
17	K-090162	COLLAR "HALLOWELL" (750 BORE)		1
18	C-158484	PLATE LAPPING		1
19	A-279483	STRAP TIE		1
20	C-158944	SHFT LAPPING PLATE PIVOT		1
21	B-156948	BRACKET SLIDE ADJUSTMENT		1
22	X-085101	SHFT HANDLEHEL (750 DIA X 7.50 LG)	B-032116	1
23	X-051509	SHFT CONNECTING (750 DIA X 9.00 LG)	B-032116	1
24	K-158646	ROD ADJUSTING	B-019942	1
25	K-092432	SPRING "OMALY" #9-0804-11 (.261 ID X 50 OD X 1.00 LG)		6
26	K-302854	FLAT WASHER (.250 ID)		12
27	K-097243	NUT "HYLOX" TORQ-PATCH #P8954202		6
28	K-097254	UNIVERSAL JOINT "LOVEJOY" #LJO-1-10 (1.750 DIA BORES)		2
29	K-094713	BEARING "LUBE ALLOY" #LT-1224-16 (1.750 DIA)		2
30	B-288654	PLATE - TIE		2



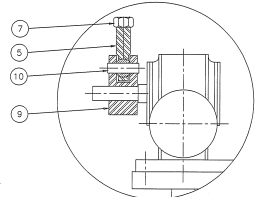
DETAIL A-A



DETAIL B-B



DETAIL C-C



DETAIL D-D

COMPANY: VERNON INTERNATIONAL GROUP INC. ALL RIGHTS RESERVED. THIS DOCUMENT CONTAINS PROPRIETARY INFORMATION AND IS THE PROPERTY OF VERNON INTERNATIONAL GROUP INC. NO PORTION OF THIS OR ANY PORTIONS HEREOF SHALL BE REPRODUCED OR TRANSMITTED IN ANY FORM OR BY ANY MEANS WITHOUT THE WRITTEN CONSENT OF VERNON INTERNATIONAL GROUP INC.

DWG NO: D-287414
 DATE: 12-2-92
 SIZE: 11 X 17
 SCALE: 1:1
 DRAWN BY: J. LITTLE
 CHECKED BY: J. LITTLE
 APPROVED BY: J. LITTLE
 DATE: 12-2-92
 SCALE: 1:1
 SHEET: 1 OF 1

LITTELL
 VERNON INTERNATIONAL GROUP INC.
 287414