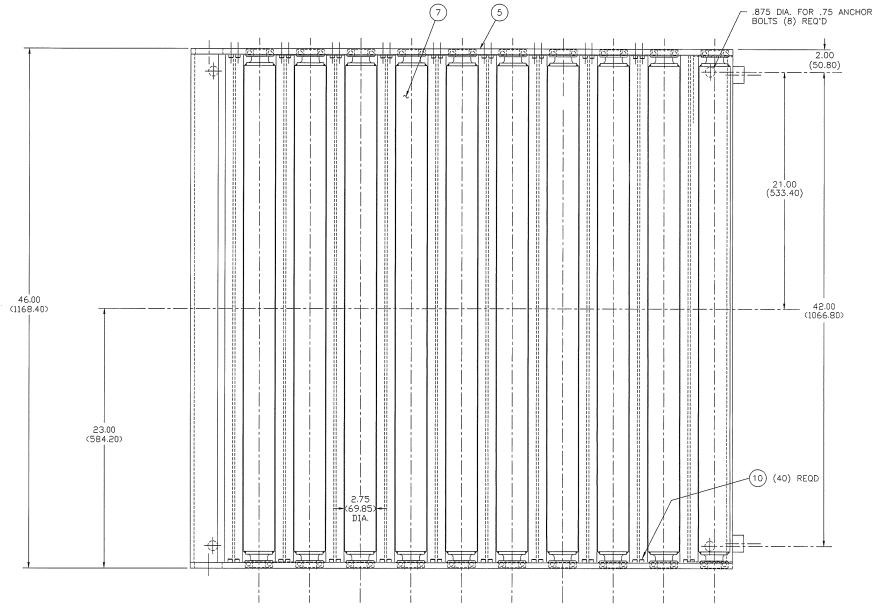
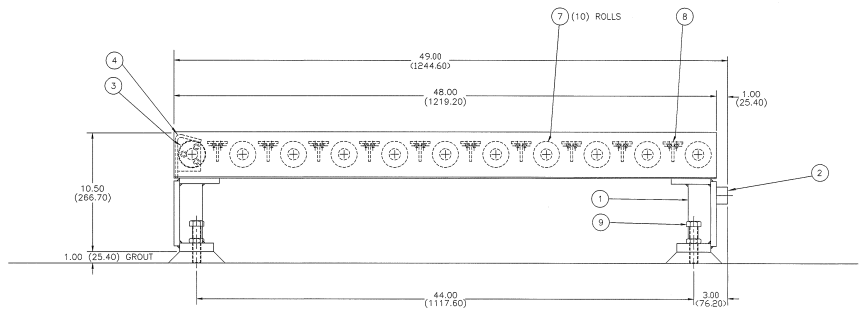


DATE	SYM	BY
02/01/98	S-0101	JA



10	K-61358	SCREW, SHC, M6 x 1.0 x 10MM LG	40	80
9	K-006100	SET SCREW .750"-10 x 3.25 LG	4	8
8	B-140039	BAR-TEE #M1020 1/8 x 1.75 x 1.75 x 44.88 LG	10	20
7	C-128000	ASSEMBLY-CONVEYOR ROLL	10	20
6	K-093731	BEARING-"N.D." #Z-499506	20	40
5	B-288661	FRAME-SIDE DISCHARGE CONV.	2	4
4	C-288662	BRACKET-CONV. STOP	1	2
3	A-297204	PLUG-CONV. STOP BRACKET	2	4
2	A-297206	SPACER-CONV. TO STACKER 1.00 THK.	2	4
1	C-299978	BEAM-SUPPORT DISCHARGE CONV.	2	4
REV	PART NO.	DESCRIPTION	NO TOTAL	REQ'D/STOCK



FOR INCH THD. SEE D-131671

CONTRACT: VISION INTERNATIONAL GROUP INC. ALL RIGHTS RESERVED. THIS DOCUMENT CONTAINS CONFIDENTIAL INFORMATION. THIS DOCUMENT IS THE PROPERTY OF VISION INTERNATIONAL GROUP INC. AND IS TO BE USED ONLY FOR THE PROJECT AND LOCATION SPECIFICALLY IDENTIFIED HEREIN. WITHOUT THE EXPRESS WRITTEN CONSENT OF VISION INTERNATIONAL GROUP INC.

CHG: 02-09-98 MS
 DATE: 02/09/98 JK
 DEL: VISION INTERNATIONAL GROUP INC.
 TITLE: ASSEMBLY - PALLET CONVEYOR - ROLLER
 WORKING: STACKER
 SHEET NO. D-299979
 ISSUE NO. 83248-77 1 SET 1 OF 1 SCALE: 3/8"=1'-0"

DIMENSIONS IN (MM) OR IN (IN)