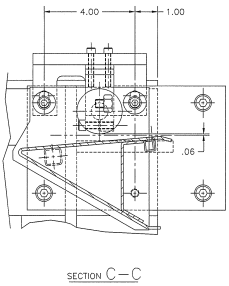
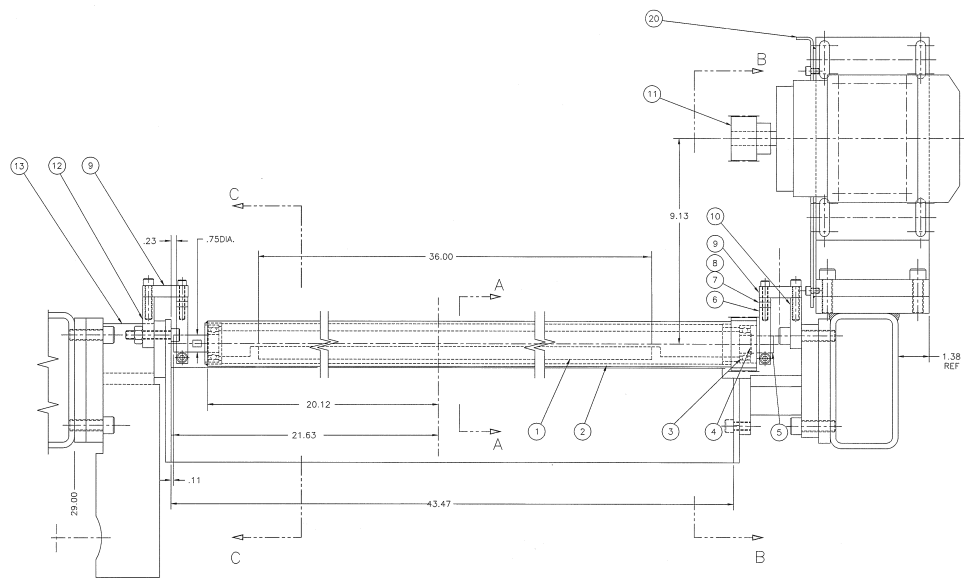
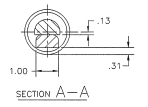
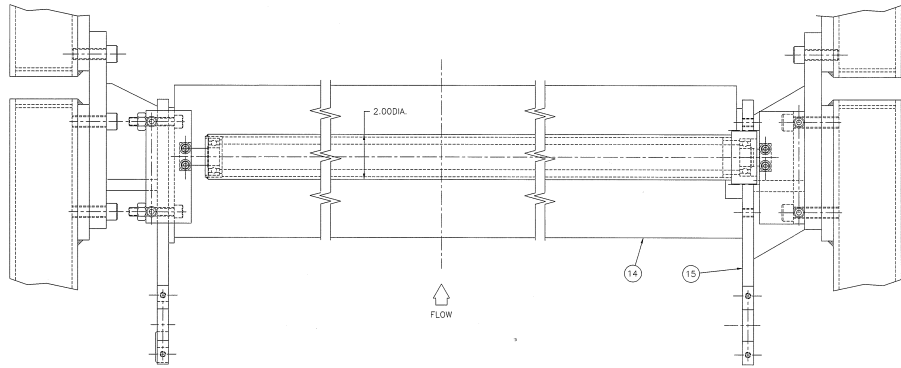


FORM D-308185			
DATE	BY	ISS	REV
		A-20000	



20	1	309443	GUARD - DRIVE MAGNETIC ROLL	B-309443
19	1	084257	BELT - "UNIROVAL" TIMING HTD #720-BM-20	
18	1	309448	PLATE - TAPPING	B-286052
17	1	309447	BRACKET - MOTOR MTC.	B-309447
16	1	309446	PLATE - MOTOR MTC.	B-309446
15	1	309445	BRACKET - TIE (REAR)	C-309445
14	1	309093	BRIDGE - STATIONARY	D-309093
13	1	302387	BRACKET - TIE (FRONT)	C-302387
12	1	309444	PLATE - SUPPORT	A-309444
11	1	309442	PULLEY - "MARTIN" #P20-BM-20-MPB .625DIA. BORE	
10	1	309441	PLATE - SUPPORT	A-309441
9	2	309096	PLATE - ADJUSTMENT	B-309096
8	2	307072	SPACER	B-293449
7	2	307071	SPACER	B-293449
6	2	307070	BLOCK - CLAMP	A-307070
5	1	309095	SHAFT - ROLL	B-307068
4	2	092438	RING - RETAINING "WALDES" #5100-78	
3	2	092443	BRG. - "ND" #Z993L04 .787 I.D. x 1.653 O.D. x .472WD.	
2	1	307067	ROLL	B-307067
1	1	307069	MAGNET - "BM" #BM4923-36 1"x.56x.36" LG.	

PARTS LIST		DESCRIPTION	DWG No
QTY	PART No		
<small> COPYRIGHT VERNON INTERNATIONAL GROUP INC. ALL RIGHTS RESERVED. THIS DOCUMENT CONTAINS PROPRIETARY INFORMATION AND IS THE PROPERTY OF VERNON INTERNATIONAL GROUP INC. NO PART OF THIS DOCUMENT IS TO BE REPRODUCED OR TRANSMITTED IN ANY FORM OR BY ANY MEANS, ELECTRONIC OR MECHANICAL, INCLUDING PHOTOCOPYING, RECORDING, OR BY ANY INFORMATION STORAGE AND RETRIEVAL SYSTEM. </small>			
DATE	ISS		
DATE	ISS		
TITLE	DATE	NAME	VERNON INTERNATIONAL GROUP INC.
TITLE	DATE	NAME	VERNON INTERNATIONAL GROUP INC.
WORKING	DATE	NAME	VERNON INTERNATIONAL GROUP INC.
DATE	ISS	NAME	VERNON INTERNATIONAL GROUP INC.
DATE	ISS	NAME	VERNON INTERNATIONAL GROUP INC.