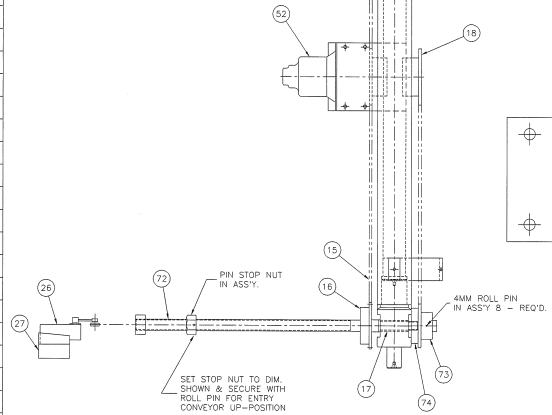
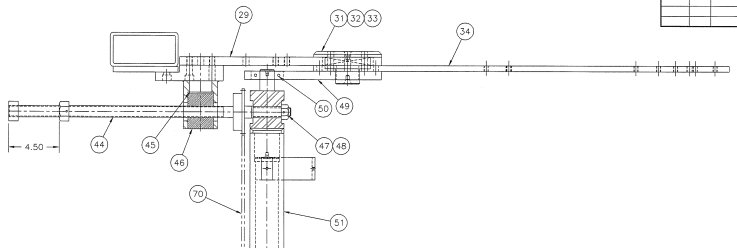


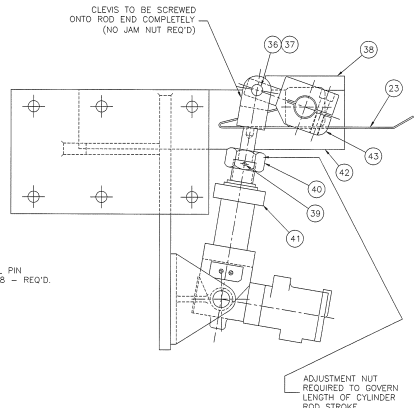
DATE	BY	REV	BY

44	1	SCREW-ADJ. ENTRY CONV.	X-141999	B-126710
43	4	ARM - GATE		B-302473
42	4	BRACKET - TIE (FRONT)		C-302387
41	1	CYL. "BELLOWS VALVAR" #B8011-5027	K-095054	
40	1	NUT-HEX. ADJUSTMENT		A-302476
39	1	PLUG - BRASS		A-137067
38	8	BAR-TIE BRG.		A-126718
37	8	RING-RET-"WALDES" #5100-50	K-090922	
36	4	PIN-CYL-CLEVIS-GATE	X-082202	B-022939
35	1	GUARD-ENTRY CONV.	X-308925	D-237277
34	2	PLATE-ENTRY CONV. SIDE SUPP.		D-302490
33	2	RETAINER - PIVOT		B-126705
32	4	WASHER-BRASS-1/2" X 4" X 6"	X-126712	B-023202
31	2	BUSHING-"OLITE" #AA-4500(CUT)		A-207428
30	2	BRG.-THRUST "AETNA" #E-5	K-090110	
29	2	PLATE-ENTRY CONV. SUPPORT		C-302489
28	2	BLOCK-STOP-ENTRY CONV.		A-302493
27	1	PLATE - TAPPING-L.S.		B-288637
26	1	SW-LIM-"SO. Y" #007-#B482-CA1	K-093805	
25	2	SCREW-HEX. HD. CAP "500-13 X 3.50"	K-000000	
24	2	BAR-CHUTE SUPPORT		A-131274
23	4	GATE-DEFLECTOR-INCLINE	C-298709	
22	1	GUIDE-STATIONARY-ENTRY CONV.		C-302475
21	1	ASS'Y - ENTRY CONV. ROLL	D-299734	
20	1	SUPPORT-CONVEYOR-ENTRY	D-308431	
19	4	PIN DOWEL 12MM DIA. X 22MM LG		
18	1	SPROCKET-"MFGR'S. STD. #41830-1	K-253314	
17	4	BUSHING-"OLITE" #FF-1011-4	K-090164	
16	2	SPROCKET-"MFGR'S. STD. #41824-B	K-094328	
15	164	CHAIN-ROLLER-"MFGR'S. STD. #41	K-091589	
14	4	BAR-STOCK GUIDE	B-126720	
13	4	SUPPORT-SIDE GUIDE BAR	A-302498	
12	4	SHAFT - GATE PIVOT	C-126770	
11	8	BEARING - BALL - "SEALMASTER" ER - 15	K-090234	
10	2	SPACER - .62" X 5" X 5"	B-126716	
9	4	POINTER - STACK GUIDE	A-126722	
8	2	SCALE - REAR	A-263209	
7	2	SCALE - FRONT	A-263208	
6	4	BUSHING-THRUST-"OLITE" TT-210-2	K-094259	
5	4	STUD-HAND KNOB	A-306730	
4	4	KNOB-HAND-"SIEWEK" #10332	K-093085	
3	4	PIN DOWEL 12MM DIA. X 32MM LG		
2	1	BRACKET - PROX. GATE & REJECT	K-254490	A-206271
1	1	SW-"TORIC" PROX. #B120-047-A23X	K-098455	
ITEM	QTY	DESCRIPTION	PART NO.	DRAWING NO.

75	1	GUARD - CHAIN		C-254538
74	1	SPACER-STL. .75 I.D. X 1.50 O.D. X .38 THK.	K-034598	
73	1	SPROCKET-"MFGR. STD." #41B18	K-253315	
72	1	SCREW - ADJ. - ENTRY CONV.	X-253316	B-126710
71	2	RING-RET."WALDES" #5000-281	K-092323	
70	2	LINK - "MFGR. STD." #41	K-222237	
69	4	SPACER-CONVEYOR ROLL	X-126761	B-123715
68	2	BRG.-BALL "ND" #Z99507	K-091472	
67	2	HOUSING - BEARING	B-227367	
66	1	ASS'Y-IDLER ROLL-LOWER	X-299729	C-230934
65	1	ROLL-IDLER-CONVEYOR	D-299039	
64	4	BRG.-BALL "ND" #Z499507	K-092506	
63	2	BUSH-THRUST "OLITE" #TT-1002-1	K-091441	
62	1	PLATE-BELT SUPPORT	C-308432	
61	2	RING-RET."TRIARC" #5100-62	K-090923	
60	2	SCREW-TAKE UP (IDLER ROLL)		A-230938
59	2	RING-RET."SPIROLOX" #RST-195	K-092459	
58	2	BRG.-BALL "ND" #Z99510	K-090272	
57	1	SHAFT - IDLER (CONV. ROLL)	B-299731	
56	1	ROLL - IDLER	X-299730	B-111644
55	1	BELT-"TON-TEX" (60.00 WIDE X 96.00 LG.)	X-308429	B-145057
54	1	GUIDE-ENTRY-REAR W/DE CLAMPS	C-302469	
53	1	GUIDE-ENTRY-FRONT W/DE CLAMPS	C-302499	
52	1	MOTOR-AIR "GAST" #MAM-INV-75-CR20	K-251829	
51	1	SHAFT-ADJ.-SCREW ENTRY CONV.	C-302496	
50	2	BEARING "SM" #ER-20	X-090498	
49	2	ARM-ENTRY CONV. BRKT.	B-302491	
48	1	NUT-CASTLE-HEX. FULL "MFGS. STD." 750-16	X-092073	
47	1	WASHER-STEEL .75 I.D. X 1.50" O.D. X .12"	X-034594	B-034600
46	2	BRACKET - INSERT	B-141978	
45	2	INSERT-BRZ. ADJ. SCREW	A-302492	
ITEM	QTY	DESCRIPTION	PART NO.	DRAWING NO.



VIEW C-C



VIEW A-A

SCALE: 50=1.00

METRIC WITHOUT VACUUM SEE D-307681

Copyright © 1999, Littell, Inc. All rights reserved. The drawings contain information that is confidential and proprietary to Littell, Inc. and its subsidiaries. No part of this drawing may be reproduced or transmitted in any form or by any means, electronic or mechanical, including photocopying, recording, or by any information storage and retrieval system, without the express written consent of Littell, Inc.

CHG  
 DIM  
 DATE  
 FILE  
 HARDEN  
 DRG

04/11/2001 AT 4:00  
 DATE: 04/11/2001  
 TIME: 04:00:00  
 USER: 10-26 STUCKER/AVIC

LITTELL  
 VERSION INFORMATION GROUP INC.  
 PART NO. D-308433