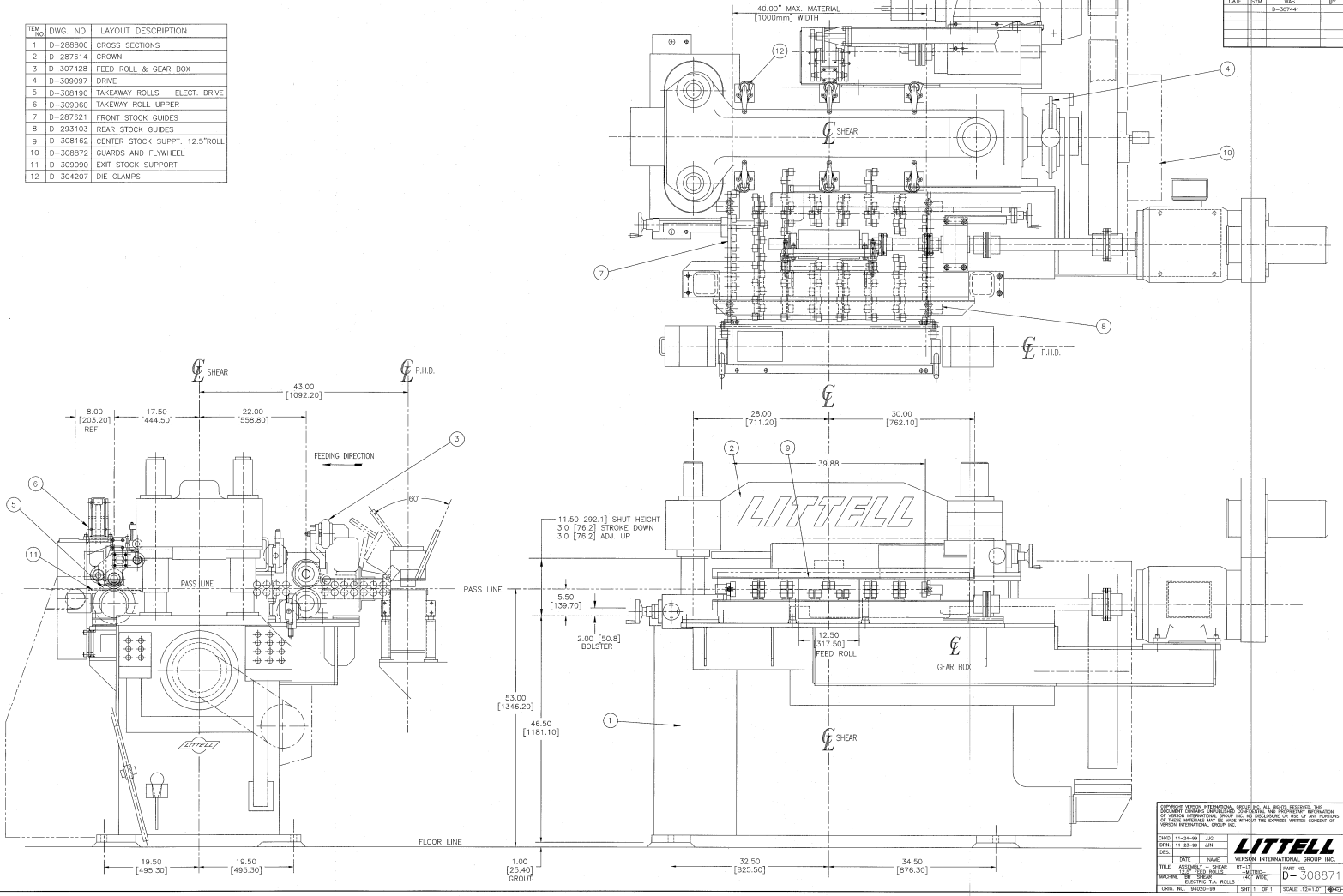


ITEM NO.	DWG. NO.	LAYOUT DESCRIPTION
1	D-288800	CROSS SECTIONS
2	D-287614	CROWN
3	D-307428	FEED ROLL & GEAR BOX
4	D-309097	DRIVE
5	D-308190	TAKEAWAY ROLLS - ELECT. DRIVE
6	D-309690	TAKEAWAY ROLL UPPER
7	D-287021	FRONT STOCK GUIDES
8	D-293103	REAR STOCK GUIDES
9	D-308162	CENTER STOCK SUPPT. 12.5" ROLL
10	D-308872	GUARDS AND FLYWHEEL
11	D-309090	EXIT STOCK SUPPORT
12	D-304207	DIE CLAMPS



Copyright Litell International Group Inc. All Rights Reserved. The design and construction of this machine is the property of Litell International Group Inc. No part of this machine may be made without the express written consent of Litell International Group Inc.

CAD: 11-24-99 JSD  
 DATE: 11-23-99 JSD  
 DES: \_\_\_\_\_  
 DRW: \_\_\_\_\_  
 MILE ASSEMBLY - SEAS ID-17  
 MACHINE - 12" FEED ROLL - 30" ROLL  
 ELECTRIC TA BOLLS CR7 WED  
 OHS: MS 9420-99

**LITTELL**  
 VIKING INTERNATIONAL GROUP INC.  
 PART NO. D-308871  
 SCALE: 1/2"=1'-0"