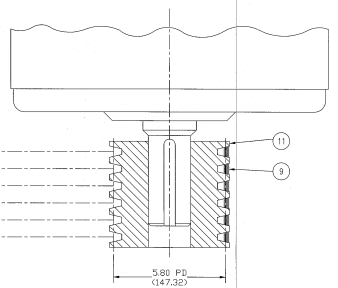
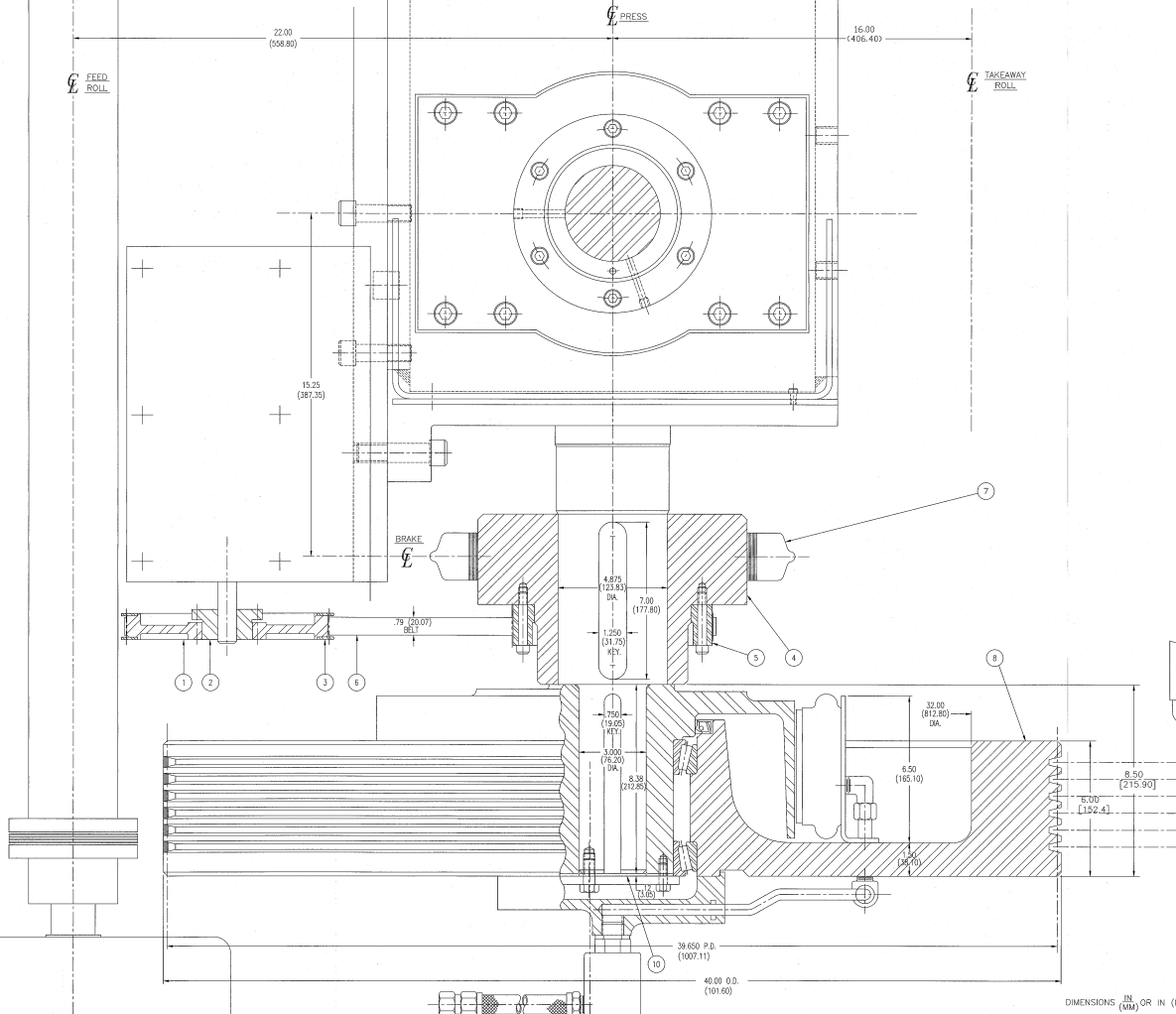


DATE	REV	WAS	BY
		R-30350	

ENG. CROSS REF:
FOR LEFT TO RIGHT DRIVE LAYOUT SEE LAYOUT DWG D-316061

ITEM REV'D	PART NO.	DESCRIPTION
1 1	K-095404	SPROCKET-"UNIROYAL" #P90-BM-20
2 1	K-201251	BUSHING-"UNIROYAL" TYPE "OD" STYLE SDS 750 DISE, 158 X1 034 KW.
3 2	X-233746	FLANGE-SPROCKET B-223390
4 1	B-302765	HUB-BRAKE AND SPROCKET
5 1	B-230904	SPROCKET-CAM SWITCH DRIVER
6 1	K-097141	BELT-"UNIROYAL" #1760-BM-20
7 1	K-094450	BRAKE-"EATON-FAWCO" #12C1237
8 1	K-251780	CLUTCH-"EATON-FAWCO" #1625000 WITH CLUTCH ELEMENT, DRUM, OD BRGS, SEALS & PIPING. MOUNTED TO A 40" DIA X 32" RIM-6" FACE FLYWHEEL W/6 "B" BELT GROOVES
9 6	K-248481	BELT-"GATES" #B-144 V-TYPE
10 1	A-146720	SHIM-PRESS CLUTCH
11 1	SEE PARTS LIST	SHEAVE



DIMENSIONS IN (MM) OR IN (MM)

UNLESS OTHERWISE SPECIFIED FINISH SURFACE SHALL BE:

FINISH	TOLERANCE ±
2 AND 1 X	0.015"
3 X X	0.010"
4 X X X	0.0075"
5 X X X X	0.0050"

ANGLE ± 30°

UNLESS OTHERWISE SPECIFIED: DRUM SHAFT CROSS-SECTION UNLESS OTHERWISE SPECIFIED

Copyright © 1999, LITTELL INTERNATIONAL GROUP INC. ALL RIGHTS RESERVED. THE COMPANY, COMPANY LOGO, COMPANY NAME, AND PRODUCT OF THE COMPANY OR TRADE NAME SHALL BE THE PROPERTY OF LITTELL INTERNATIONAL GROUP INC. NO REPRODUCTION OR USE OF ANY PORTION OF THIS DRAWING WITHOUT THE WRITTEN CONSENT OF LITTELL INTERNATIONAL GROUP INC.

DATE: 10/18/99
DESIGNER: J. J. JONES
CHECKER: J. J. JONES
TITLE: LAYOUT
SCALE: 3/4"=1"
MATERIAL: 304 SS
WORKING: 10/28/99

LITTELL
LITTELL INTERNATIONAL GROUP INC.
D-309097

FORM D-309097