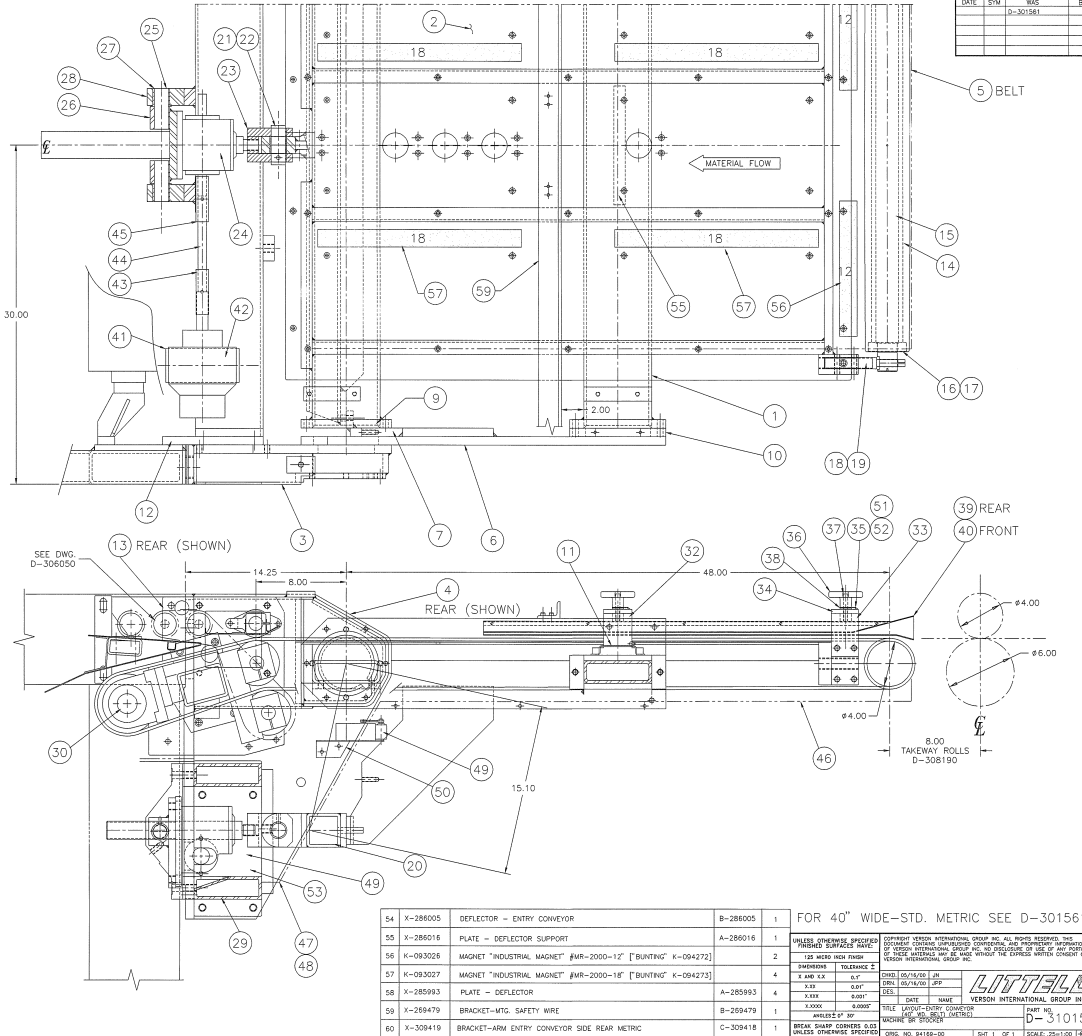


ITEM	PART No.	DESCRIPTION	DWG. No.	TOTAL
1	X-309422	SUPPORT - BELT ENTRY CONVEYOR	D-309422	1
2	X-309423	PLATE FULL - WITH BELT SUPPORT	D-309423	2
3	X-286026	HOUSING - PIVOT - FRONT	D-286026	1
4	X-286027	HOUSING - PIVOT - REAR	D-286027	1
5	X-309968	BELT - "TON-TEX CORP." 3/8" WD X 150' LG.	B-257424	1
6	X-309418	BRACKET-ARM ENTRY CONVEYOR SIDE FRONT METRIC	C-309418	2
7	X-136246	RING - PIVOT GUIDE	B-136246	2
8				
9	K-064715	BUSHING "OUTLET" #AA-5700-1 [5.004 ID X 5.755 OD X 2.00 WD]		2
10	X-286034	SPACER - SUPPORT TUBE	B-286034	2
11	X-151507	HANDLE - SPACER	A-151507	2
12	X-286038	PLATE - TIE (FRONT)	C-286038	1
13	X-286039	PLATE - TIE (REAR)	C-286039	1
14	X-307553	ROLL - IDLER - CONVEYOR 4" DIA. CROWNED	B-307553	1
15	X-307552	SHAFT - IDLER - 4" O.D. CONVEYOR ROLL	B-307552	1
16	K-090271	BEARING "N.D." #299559 [1.7717 ID X 3.3445 OD X .7480 WD]		80
17	K-082458	RING - RETAINER "SPRINGLOK" #RSF-177		60
18	K-091441	BUSHING "OUTLET" #TT-1002-1 [.62 ID X 1.00 OD X .06 WD]		54
19	X-151137	SCREW - ADJUSTMENT	A-151137	4
20	X-308421	BAR ARM PIVOT CONNECTOR	B-309421	1
21	K-094710	BUSHING "OUTLET" #M-1512-2 [1.25 ID X 1.500 OD X 1.50 WD]		1
22	X-047396	SHAFT-SOLID BAR-CRS [1.25 DIA X 3.50 LG]	B-035561	1
23	X-137191	CLEVIS - JACTUATOR STAND OFF	B-137191	1
24	X-145641	ACTUATOR [MODIFIED "DUFF NORTH" #1805 (K-094711)]	A-145641	1
25	X-011079	PIN - JACTUATOR [1.25 DIA X 3.81 LG]	B-035561	2
26	X-286030	PLATE - JACTUATOR MOUNTING	C-286030	1
27	X-094709	BUSHING "OUTLET" #FF-1506-3 [1.252 ID X 1.503 OD X 1.75 WD]		2
28	X-286029	BRACKET - PIVOT - JACTUATOR MOUNTING	B-286029	2
29	X-286028	BRACKET - CROSS MOUNTING	B-286028	1
30	X-307554	ROLL - CONVEYOR [DRIVEN]	C-307554	1
31	X-286032	PLATE TAPPING (ENTRY CONV. STOP)	B-286025	1
32	B-286047	BRACKET - MTG-CROSS BAR -OUTSIDING	B-286047	2
33	B-286048	BRACKET - MTG-CROSS BAR -INSIDING	B-286048	2
34	X-289502	BAR - STOCK GUIDES	B-287316	4
35	X-287317	PIONTER	A-287317	4
36	K-064717	KNOB "SIEWEK" #10353		4
37	X-287318	ROD - THREADED	B-054299	4
38	K-094259	BUSHING "OUTLET" #TT-710-2		4
39	X-286050	GUIDE - ENTRY CONVEYOR (R.H.)	C-286050	1
40	X-286049	GUIDE - ENTRY CONVEYOR (L.H.)	C-286049	1
41	X-286052	PLATE - AIR MOTOR MOUNTING	B-286052	1
42	K-251289	MOTOR AIR "GAST" #AM-75-GR-20D (10:1 RATIO) W/ MUFFLER		1
43	X-253377	UNIVERSAL JOINT "LOVEJOY" #D-89 [BORE #1: 0.750, BORE #2: 1.000]		1
44	X-102182	SHAFT (750 DIA X 6.12 LG)	B-032116	1
45	X-253378	UNIVERSAL JOINT "LOVEJOY" #D-88 [BORE #1: 0.750, BORE #2: 0.750]		1
46	X-286053	GUARD	C-286053	1
47	X-141319	GUARD L.H.	B-141319	1
48	X-141321	GUARD R.H.	B-141321	1
49	K-090267	LIMIT SWITCH "SQUARE D" CLASS 9007 #M12-CA1		2
50	X-286051	BRACKET - LIMIT SWITCH (R to L) USE A-30159 FOR (L to R)	A-286051	1
51	X-116056	SCALE-PRUGUIDE-REAR [24" to 40"] / [600 mm to 1000 mm]	A-116056	2
52	X-116055	SCALE-PRUGUIDE-FRONT [40" to 24"] / [1000 mm to 600 mm]	A-116055	2
53	X-286837	BRACKET - LIMIT SWITCH	B-286837	1



54	X-286005	DEFLECTOR - ENTRY CONVEYOR	B-286005	1	FOR 40" WIDE-STD. METRIC SEE D-301561
55	X-286016	PLATE - DEFLECTOR SUPPORT	A-286016	1	
56	K-093026	MAGNET "INDUSTRIAL MAGNET" #MR-2000-12 [BUNTING K-094272]		2	
57	X-093027	MAGNET "INDUSTRIAL MAGNET" #MR-2000-12 [BUNTING K-094273]		4	
58	X-285993	PLATE - DEFLECTOR	A-285993	4	
59	X-269479	BRACKET-MTG. SAFETY WIRE	B-269479	1	
60	X-309419	BRACKET-ARM ENTRY CONVEYOR SIDE REAR METRIC	C-309419	1	