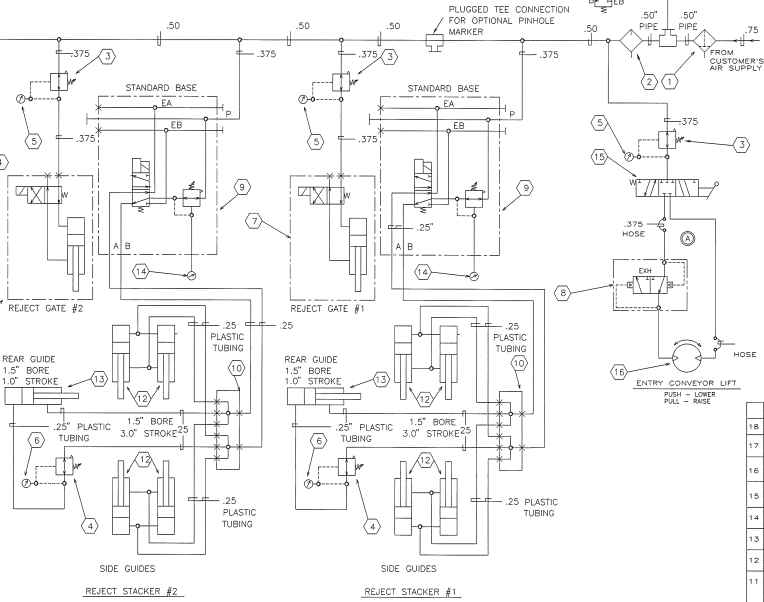


REJECT BRIDGE & CHUTE #2
 REJECT AIR IN GATE #2
 REJECT AIR IN GATE #1
 REJECT BRIDGE & CHUTE #1

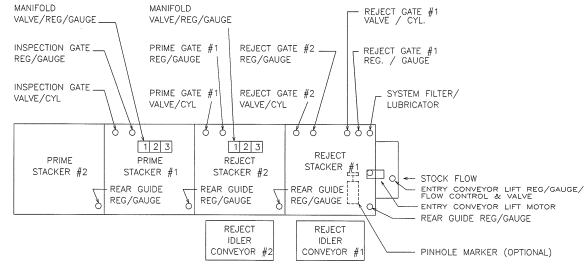


REJECT STACKER #2
 REJECT STACKER #1

SEQUENCE OF OPERATION

- | | |
|---|--|
| <p> INSPECTION GATE
 PRIME GATE #1
 REJECT GATE #1
 REJECT GATE #2
 REJECT AIR IN GATE #1
 REJECT AIR IN GATE #2
 PRIME AIR IN GATE #1
 PRIME AIR IN GATE #2 </p> | <p> CONTROLLED BY 2 POSITION 4 WAY SINGLE SOLENOID OPERATED VALVE. SOLENOID IS ENERGIZED TO OPEN THE GATES.

 CONTROLLED BY 2 POSITION 4 WAY DOUBLE SOLENOID OPERATED VALVE. SOLENOID IS ENERGIZED TO OPEN THE AIR IN GATES. </p> |
| <p> PRIME STACKER 1 & 2
 REJECT STACKER 1 & 2
 SIDE & REAR GUIDES </p> | <p> CONTROLLED BY 2 POSITION 4 WAY SINGLE SOLENOID OPERATED VALVE. SOLENOID IS ENERGIZED TO OPEN THE SIDE GUIDES AND REAR GUIDES. </p> |
| <p> ENTRY CONVEYOR LIFT </p> | <p> CONTROLLED BY 3 POSITION, 4 WAY SPRING CENTERED HAND LEVER VALVE. LIFT & DESCENT OF ENTRY CONVEYOR THROUGH HAND LEVER POSITION. </p> |



NOTES:

- USE "BARBER-HANNIFIN" COMPRESS-ALIGN FITTINGS
- ALL TUBINGS TO BE AS NOTED
- 25" = 375" TUBING - .035" WALL
- 15" TUBING = .042" WALL
- 25" PLASTIC TUBING ~ .040" WALL
- "IMPERIAL EASTMAN" POLY-FLO #44-P (NATURAL COLOR)

18	4	MUFFLER - "QUIETAR" #M5003A, 38 NPT	287087
17	4	VALVE - "DIRECTIONAL" MAC3 4 WAY, 2 POS DOUBLE SOLENOID #R22-DA-CM-TU-2DAP-1DA-8-PRB2-ASBB-9	302049
16	1	MOTOR - "CASE" #44M-INV-75-SRD 10-D1 GEAR REDUCTION REVERSIBLE ROTATION 1/4-VALES W/HAUSLER	251829
15	1	VALVE - "AIR" #K313L3 3 POSITION, SPRING CENTERED, 4 WAY SIDE PORTED W/HAND LEVER - 38 NPT	251833
14	4	GAUGE - "NORGREN" -AIR PRESS, #F8-013-208 0-60 PSI, 25" BACK CONN.	093946
13	4	CYLINDER - "BIMBA" -NON CUSH, 1.5" BORE, 1.0" STROKE, #B-10622-AA-1	094134
12	16	CYLINDER - "BIMBA" CUSH, BOTH ENDS 1.5" BORE, 3" STROKE, #173-DP	094277
11	1	VALVE - "NUMATIC" 4 WAY SOL. DOUBLE RETURN - SP40 MOD #34SP48B 24 V - DC 50" I.J.C.	264234
10	4	BOOK - MANIFOLD - AIR	B-134986
9	4	VALVE - "NUMATIC" SOL. SOL./SINGLE REG. MARK 7 #1184D48 24 V DC #8229-AS2A REGULATOR (3-50 PSI)	264235
8	1	VALVE - AIR QUICK EXHAUST "PNEUTROL" MODEL #EV-258	083735
7	4	CYLINDER - "BELLOW AIR MOTOR" MODEL #8B011-522 1.25" BORE WITH 1 STROKE #4 V - DC SINGLE SOL OPERATED AIR + PILOT VALVE WITH PILOT MFG.	264236
6	8	GAUGE - "NORGREN" -AIR DUAL SCALE 0-30 PSI #18-013-207 WITH PULSE DAMPER	093945
5	8	GAUGE - "NORGREN" -AIR PRESS 0-160 PSI #18-013-209 2" DUAL SCALE DIAL 25" BACK CONN.	093948
4	8	REGULATOR - "NORGREN" -AIR RELIEVING TYPE 0 - 50 PSI #R11-200-RNE .25" NPT	093933
3	5	REGULATOR - "NORGREN" - DESIGNER SERIES #R11-300-RNL 2 TO 125 PSI-REL - 375 PSI	093936
2	1	LUBRICATOR - "NORGREN" - DESIGNER SERIES #L12-400-MLA .50" NPT - 1 / 2" PINT	093941
1	1	FILTER - "NORGREN" - 50 MICRON DESIGNER SERIES #F12-400-M3TA-50 50" N.P.T. - 1 / 2" PINT	093931
SYMGT		DESCRIPTION	PART NO.
PARTS LIST			
<small> COPYRIGHT © LITTELL INTERNATIONAL, INC. ALL RIGHTS RESERVED. THIS DOCUMENT CONTAINS UNPUBLISHED, CONFIDENTIAL AND PROPRIETARY INFORMATION OF LITTELL INTERNATIONAL, INC. NO DISCLOSURE OR USE OF ANY PORTION OF THESE MATERIALS MAY BE MADE WITHOUT THE EXPRESS WRITTEN CONSENT OF LITTELL INTERNATIONAL, INC. </small>			
DATE	DESIGNER	GRAPHICAL	PART NO.
11/78	DRM	11/78	D-313450
DATE	BY	REV	
11/78	DRM	1	