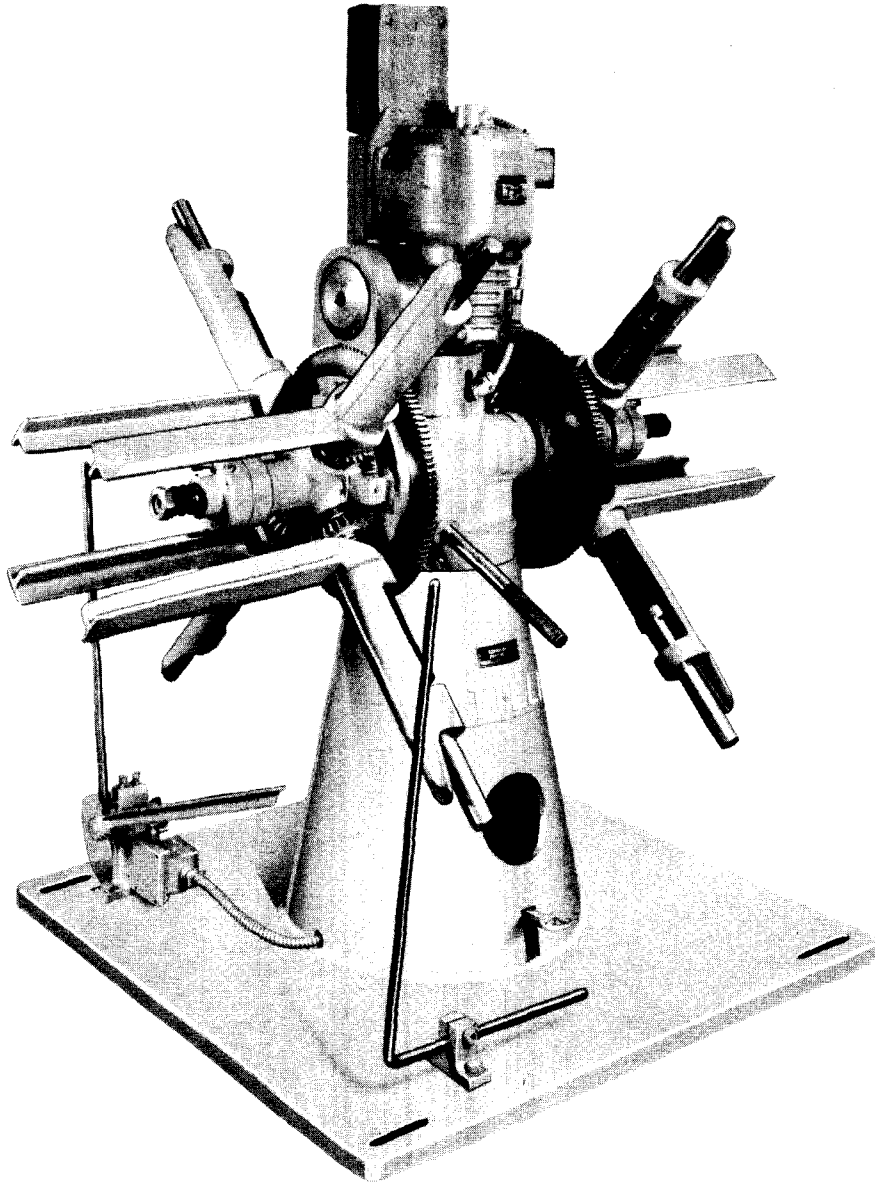


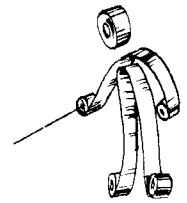
PARTS LIST AND OPERATING INSTRUCTIONS FOR NUMBER 10 DOUBLE MOTOR DRIVEN AUTOMATIC CENTERING REEL



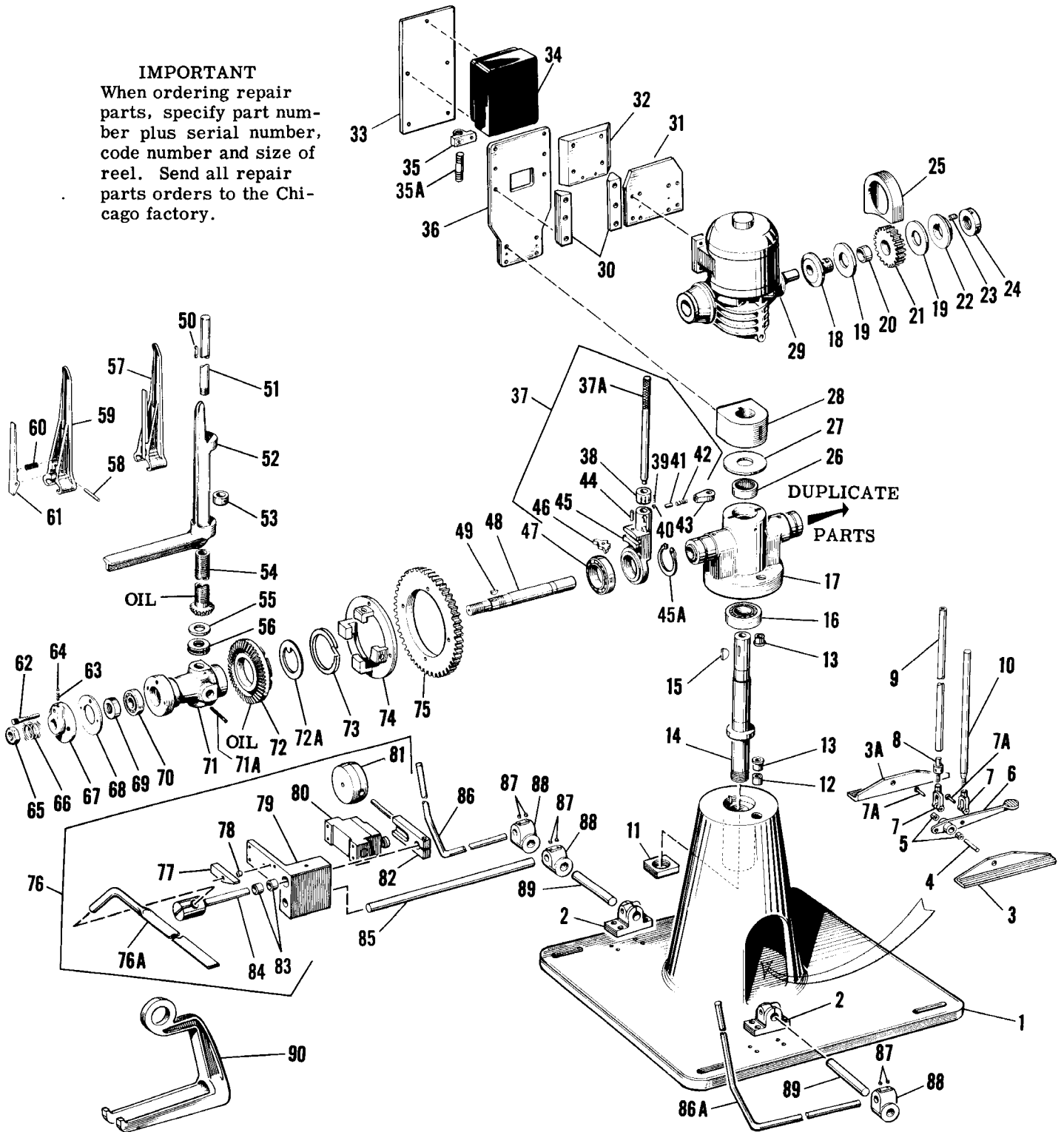
CAPACITIES

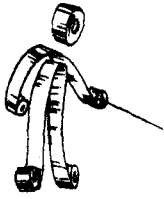
MAX. WEIGHT OF COIL	INSIDE DIA.	MAX. OUTSIDE DIA.	MAX. WIDTH
1000 lbs. each side	12" - 21"	48"	13"

F. J. LITTELL MACHINE CO.



IMPORTANT
When ordering repair parts, specify part number plus serial number, code number and size of reel. Send all repair parts orders to the Chicago factory.





No. 10 DOUBLE MOTOR DRIVEN AUTOMATIC CENTERING REEL

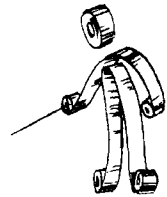


PARTS LIST

INDEX NO.	DESCRIPTION	PART NUMBER	INDEX NO.	DESCRIPTION	PART NUMBER
1	Base	44B 35430	43	Latch, Ratchet	
2	Lug, Base	45A 35711		Spring	44A 35528
3	Bracket, Foot Lever, R. H.	44A 35444	44	Pin, Roll	5/16" x 1-1/8" Lg.
3A	Bracket, Foot Lever, L. H.	44 28388	45	Head, Ratchet	44C 35529
4	Pin, Pivot	44A 35485	45A	Ring, Retaining (Truarc #5100-350)	44 90073
5	Bushing (Oilite #AA-921-4)	44 91127	46	Pawl, Ratchet	44A 12197
6	Lever, Foot	44A 35445	47	Bearing, Rear (Timken #432-438)	41 90146
7	Clevis	24 91700	48	Shaft, Spindle	44A 35488
7A	Pin, Clevis, 1/2" Dia. x 1-3/8" Long	24 90466	49	Key, Woodruff	#25
8	Screw, Adjusting	44A 35448	50	Key, Straight Arm	44A 35410
9	Rod, Push	44A 35443	51	Arm, Straight	44B 35408
10	Rod, Locking	44A 35447	52	Arm	44B 35508
11	Nut, Pivot Column	44A 35446	53	Collar, 1-3/8" I. D. (Hallowell)	14 90443
12	Bushing (Bunting #E-431 N. O. G.)	44 91116	54	Screw & Pinion	44B 35507
13	Bushing, Shoulder (Acme Type "S" Group 12)	44 91033	55	Bushing, Thrust (Oilite #TT-1900)	41 90379
14	Column, Pivot	44B 35437	56	Bearing, Thrust (Aetna #E-15)	41 90114
15	Key, Woodruff	#V	57	Assembly, Keeper	44B 19893
16	Bearing, Roller (Timken #78250-78551)	41 90156	58	Consisting of: Pin, Roll (Esna #59- 048-250-1500)	43 91145
17	Head, Swivel	44B 35526	59	Keeper	44 19892
18	Hub, Friction Drive	44A 35441	60	Spring, Keeper	41 90029
19	Washer, Friction	44A 35486	61	Catch, Keeper	44A 19891
20	Bushing (Oilite #A-2203-5)	44 91128	62	Pin, Locking	44A 35413
21	Gear, Drive	44A 35440	63	Spring, Ball Detent	13 31778
22	Plate, Friction	44A 35442	64	Ball, Steel Detent	1/4" Dia.
23	Spring, Friction	12A 31590	65	Nut, Hex, Jam	1-1/4" - 12
24	Collar, Lock	44A 35487	66	Spring, Friction	13A 31772
25	Guard, Gear	Sheet Steel	67	Cap, Friction	44A 35506
26	Bearing, (McGill #MR-44)	44 91544	68	Washer, Friction	44A 35405
27	Washer, Brass	44 24101	69	Nut, Bearing	44A 35420
28	Block, Motor Support	44A 35431	70	Bearing, Front (Timken #2729-2788)	41 90154
29	Motor, Right Angle, Geared Head, 220/440 volts	91 90658	71	Hub	44B 15957
30	Gib, Slide	44A 35435	71A	Pin, Roll	43 91144
31	Plate, Motor Slide	44A 35433	72	Gear, Bevel	44A 35504
32	Slide, Motor	44A 35434	72A	Washer, Thrust	44 37627
33	Plate, Starter	43A 51398	73	Ring, Retaining (Spirolox #RST-500)	41 90088
34	Starter, Magnetic, 220 volts (A-B Bull. #709)	92 91611	74	Adapter, Gear	44B 35439
	Starter, Magnetic, 440 volts (A-B Bull. #709)	92 91612	75	Gear, Driven	44A 35438
35	Lug, Stop	44A 35436	76	Assembly, Control Paddle Consisting of: Paddle, Control	44B 35533
35A	Stud, Motor Plate	44A 18796	76A	Latch, Control Arm	44A 35458
36	Plate, Motor Support	44A 35432	77	Sleeve, Latch	44A 35457
37	Assembly, Ratchet	44B 35534	78	Bracket, Switch	44A 35456
	Consisting of: Handle, Ratchet	44A 35494	79	Switch, Limit (Square "D")	44B 35454
37A	Collar, Ratchet	44A 35493	80	Counterweight	93 90567
38	Spring, Detent (Gardner #8C20C)	13 90053	81	Lever, Switch	44A 35451
39	Ball, Steel	5/16" Dia.	82	Bushing (Bunting #C345-N. O. G.)	44B 35453
40	Plunger, Detent	44A 10532	83	Pin, Pivot	44A 35452
41	Spring, Ratchet (Gardner #8C20C)	13 90053	84	Shaft, Support	44A 35455
42			85	Arm, Confining, L. H.	41B 35490
			86A	Arm, Confining, R. H.	41 35491
			87	Button, Brass	42 35141
			88	Knuckle	44B 35583
			89	Arm, Short, Support	44A 35561
			90	Hook, Loading	64A 35515



No. 10 DOUBLE MOTOR DRIVEN AUTOMATIC CENTERING REEL



OPERATING INSTRUCTIONS

- A. **REMOVE KEEPERS.** Release keeper catch (61) and remove keepers (57) from arms.
- B. **COLLAPSE ARMS.**
- (1) Position spider so that one of the reel arms (52) is in a vertical (12:00 o'clock) position.
 - (2) Push locking pin (62) inward to prevent spider from turning.
 - (3) Turn ratchet handle (37A), on the side of the reel being loaded, to "Contract" position.
 - (4) Move ratchet handle in an up and down motion until the reel arms (52) are contracted to at least 1 to 2 inches smaller than the inside diameter of the coil to be loaded.
- C. **DEPRESS PADDLE.** To facilitate loading of coil, push down on control paddle (76A) until it is held in the down position by control paddle latch (77).
- D. **LOAD COIL.**
- (1) Suspend loading hook (90) from hoist and insert into coil.
 - (2) Raise coil to proper height.
 - (3) Move coil onto the arms.
- E. **ATTACH KEEPERS.** Snap keepers (57) into position on the arms so that the coil is tight against the back portion of the arms.
- F. **EXPAND ARMS.**
- (1) Turn ratchet handle (37A) to "Expand" position.
 - (2) Move ratchet handle in an up and down motion until the coil is held firmly by all four of the arms. Remove hook.
 - (3) Turn ratchet handle to the "Neutral" position.
 - (4) Pull outward on locking pin (62) to release spider.
- G. **ADJUST GUIDE ARMS.** Place confining arms (86) and (86A) in proper position against the coil.
- H. **RELEASE PADDLE.** Place control paddle (76A) in center of coil and release control paddle latch (77).
- I. **PLACE COIL IN PAY-OFF POSITION.**
- (1) Press foot lever (6) down to release locking rod (10) from hole in swivel head (17) and to disengage drive gear (21) from driven gear (75).
 - (2) Pivot the spider heads on the base until the full coil is moved into the pay-off position. At a position of 180°, release the foot lever carefully to engage drive gear with driven gear and to lock swivel head with the locking rod.
- J. **ADJUST SPIDER TENSION.** The friction cap (67) can be adjusted to maintain desired tension on the spider by loosening or tightening jam nut (65).
- K. **ELECTRICAL OPERATION.**
- (1) Automatic Operation. Place the selector switch, located on the magnetic starter (34), in the "Automatic" position. Stock will be paid-off only when the control paddle (76A) is raised to a position where the motor starts. When there is an excess of stock, the weight of the outside loop will force the paddle to the down position and the motor will not operate or pay-off stock.
 - (2) Hand Operation. Place the selector switch, located on the magnetic starter (34), in the "Hand" position. The motor will operate continuously and pay-off stock until the switch is returned to the "Off" position.
- L. **FRICION DRIVE ADJUSTMENT.** The friction drive can be adjusted for the desired amount of slippage. To increase amount of slippage, loosen lock collar (24); to decrease slippage, tighten the lock collar.

MAINTENANCE INSTRUCTIONS

All Littell Reels are of very rigid construction and, if the capacities are not exceeded, will give years of trouble-free service. Proper lubrication is the only maintenance required. Oil must be applied at the points shown on the exploded view drawing. The proper oil level must be maintained in the electric motor gear head box (29).

F. J. LITTELL MACHINE CO.

4101 N. RAVENSWOOD AVENUE

CHICAGO, ILLINOIS 60613