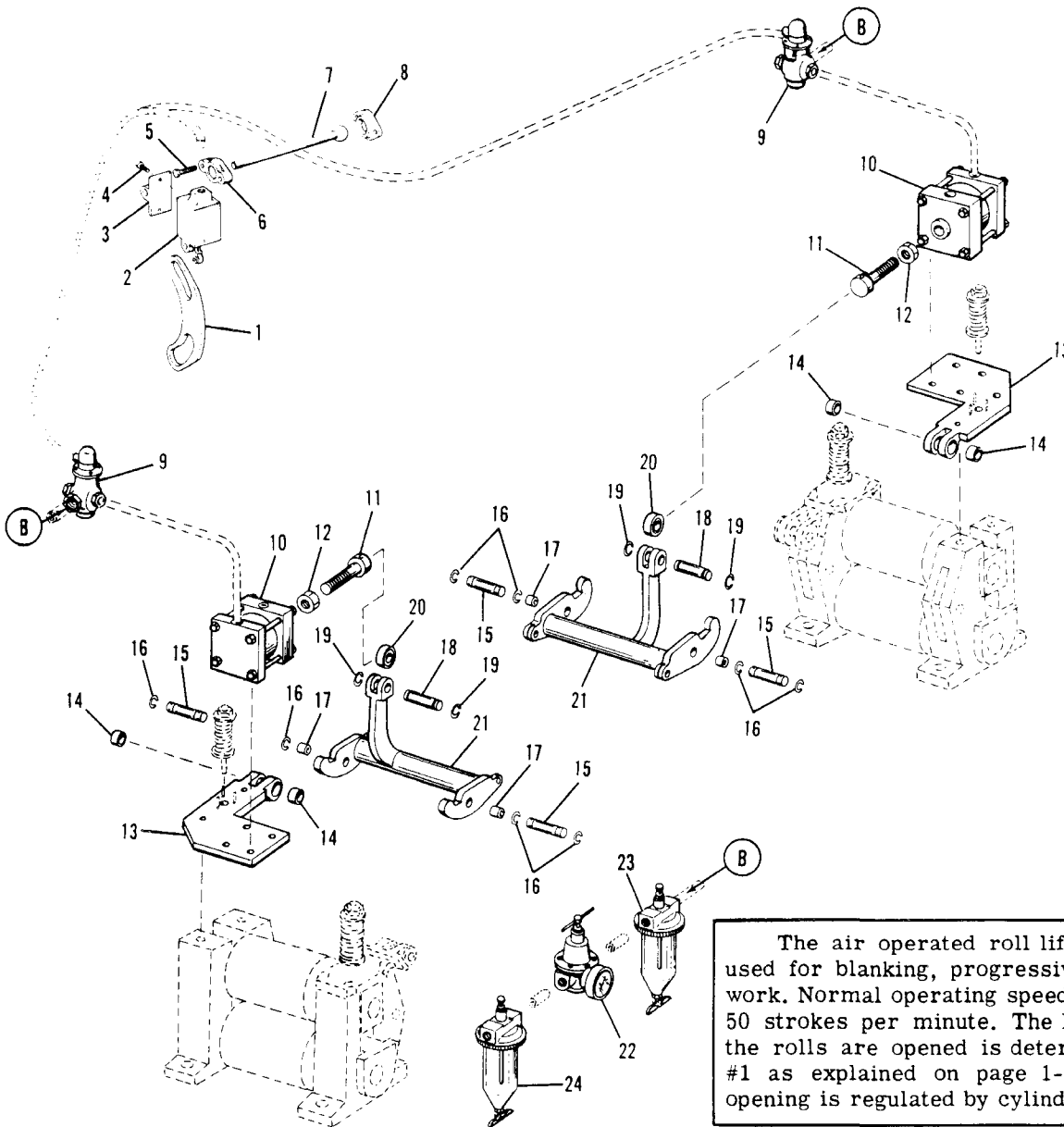


# SECTION IV

## AIR OPERATED ROLL LIFTER



The air operated roll lifters are normally used for blanking, progressive and shallow die work. Normal operating speed should not exceed 50 strokes per minute. The length of time that the rolls are opened is determined by the cam #1 as explained on page 1-7. The amount of opening is regulated by cylinder end 11.

INDEX NO.	DESCRIPTION
1	Cam
2	Switch - Limit, Snap-lock
3	Bracket - Switch
4	Screw - Socket-head, Cap
5	Screw - Hex-head Cap
6	Plate - Ball Clamp
7	Post - Large Ball Head
8	Plate - Ball Base
9	Valve - Air
10	Cylinder - Air
11	End - Air Cylinder
12	Nut - Jam

INDEX NO.	DESCRIPTION
13	Bracket - Air Cylinder
14	Bushing - Air Cylinder Bracket
15	Pin - Fulcrum
16	Ring - Retainer
17	Bushing - Fulcrum Pin
18	Pin - Fulcrum
19	Ring - Retainer
20	Roller - Air Cylinder End Follower
21	Lever - Lifter
22	Regulator - Pressure
23	Lubricator
24	Filter - Manual Drain