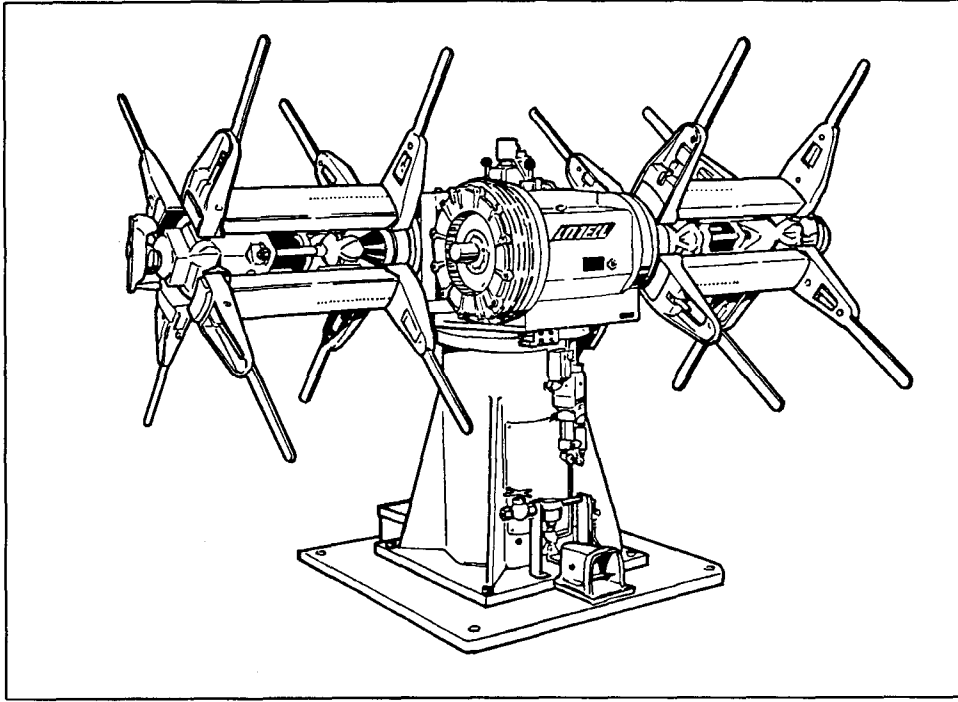


No. 60 Double Reel: Automatic Centering

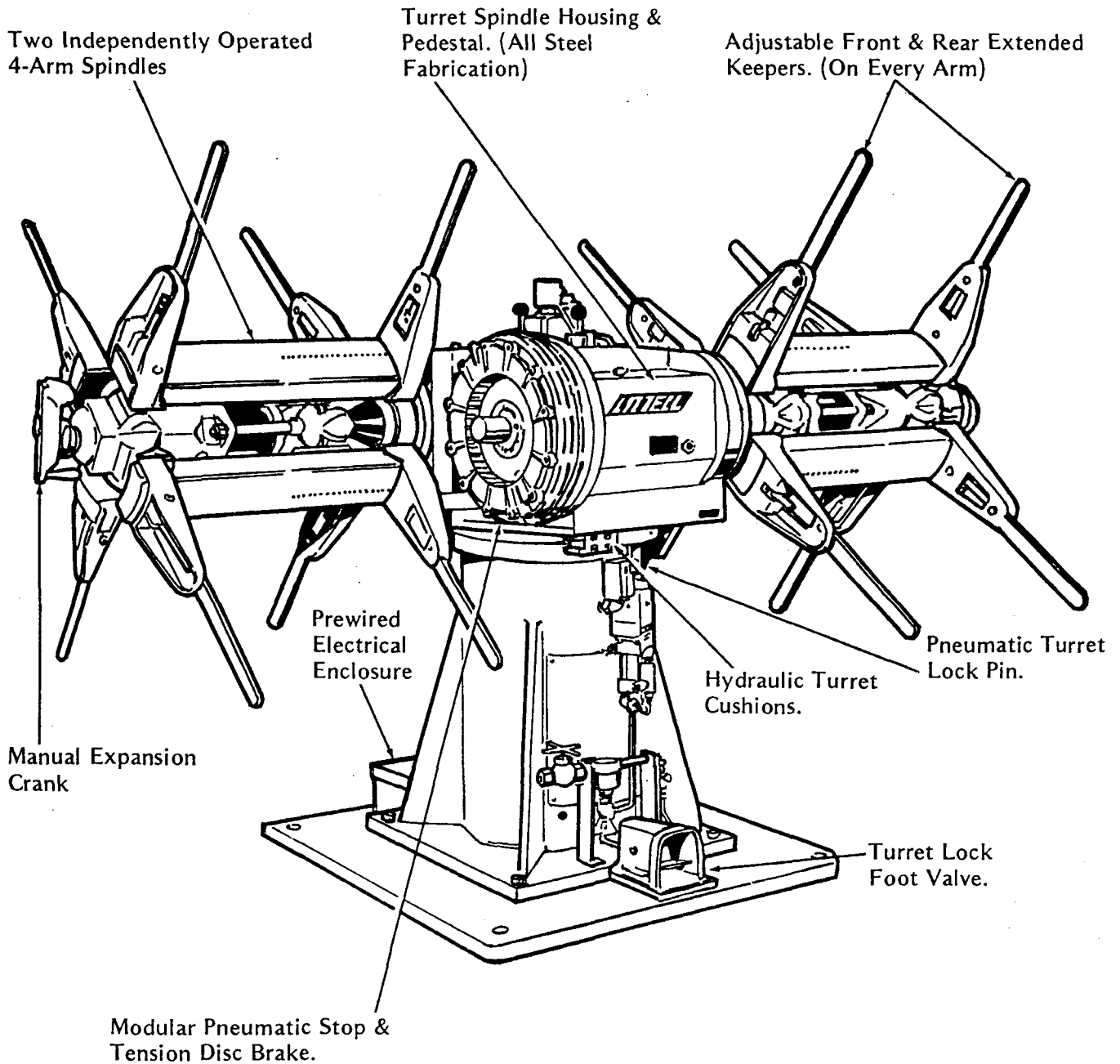
SERVICE BULLETIN NUMBER SD-124



<u>INDEX TO EXPLODED VIEWS AND PARTS LISTS</u>	<u>Page(s)</u>
Description General	2
Spindle Assembly & Parts List	3-4
Pneumatic Tube Assembly, Bearing Case, Assembly & Parts List	5-6
Base & Turret Assembly & Parts List	7-8
Modular Pneumatic Unit, Pneumatic Diagram & Parts List	9
Wiring Diagram	10
Lubrication System	11

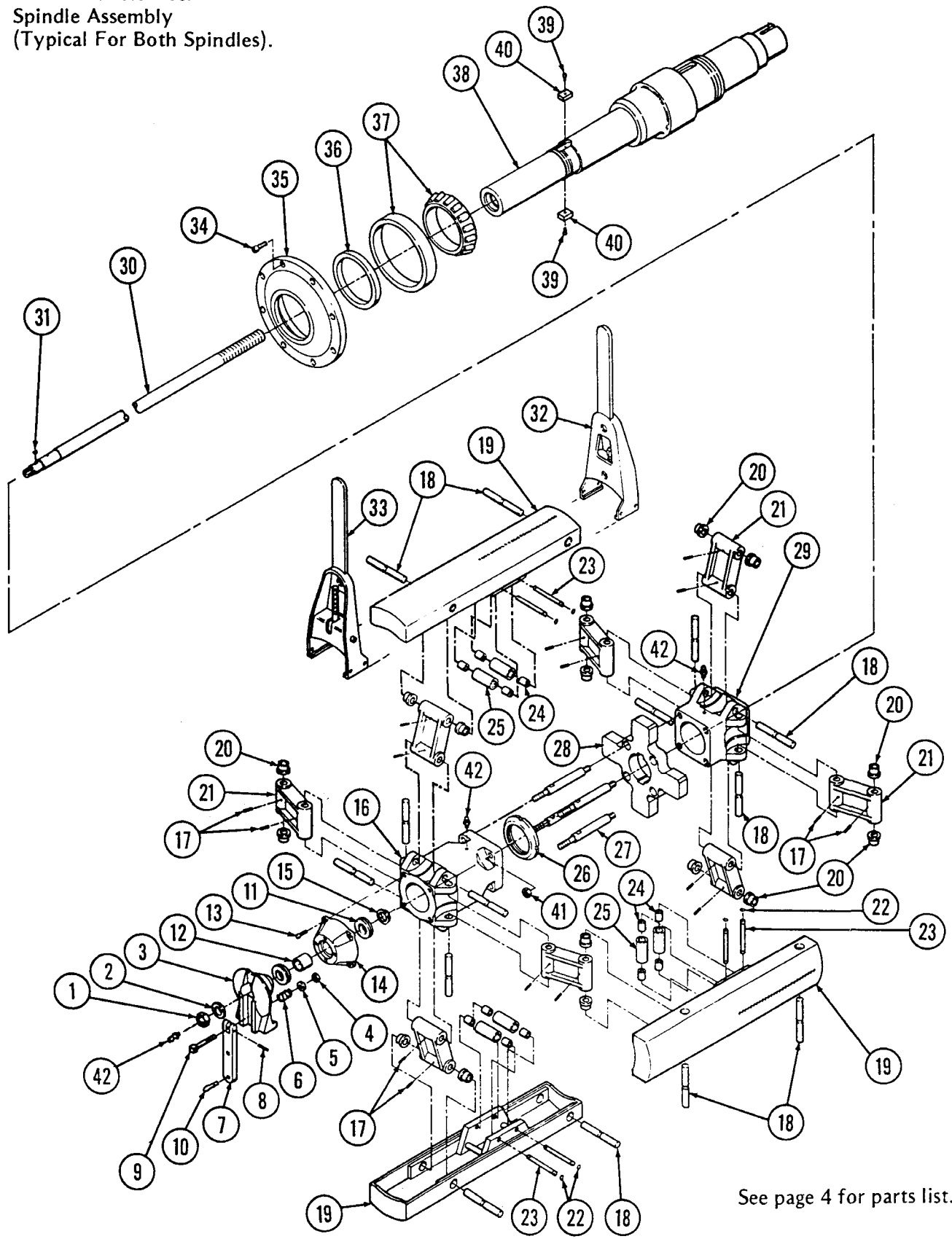
LITTELL INTERNATIONAL, INC.
145 SWIFT ROAD, ADDISON, ILLINOIS 60101-1407, U.S.A.
AREA CODE: (630) 916-6662 LITTELL TELEFAX: (630) 916-6663
SERVICE DEPARTMENT TELEFAX: (630) 916-6664

No. 60 Double Reel:
Description - General



180° Manual Indexing Turret

No. 60 Double Reel:
Spindle Assembly
(Typical For Both Spindles).



See page 4 for parts list.

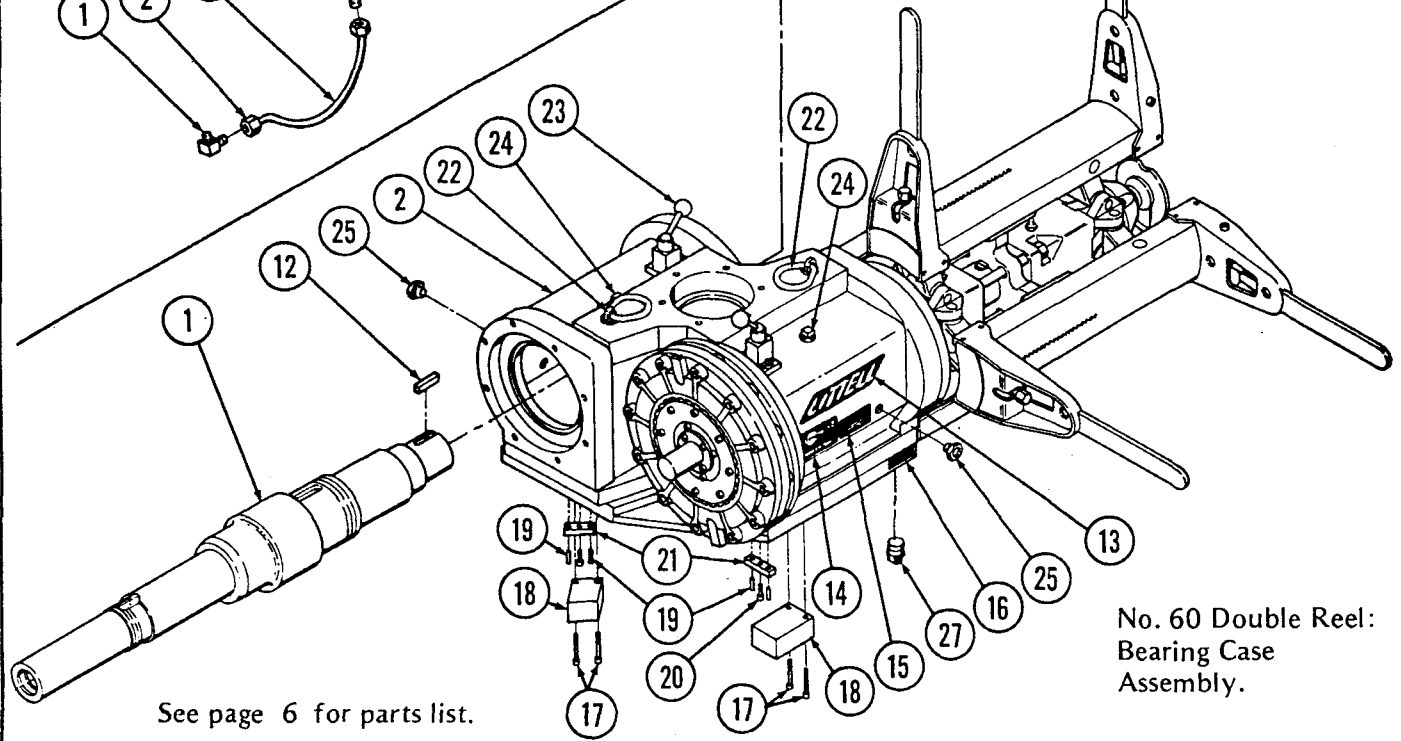
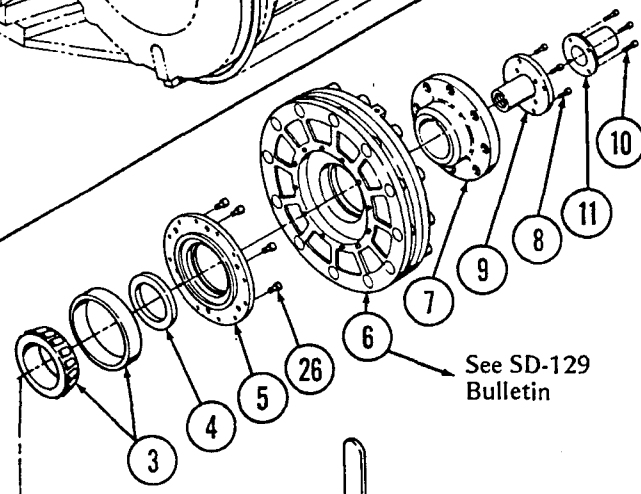
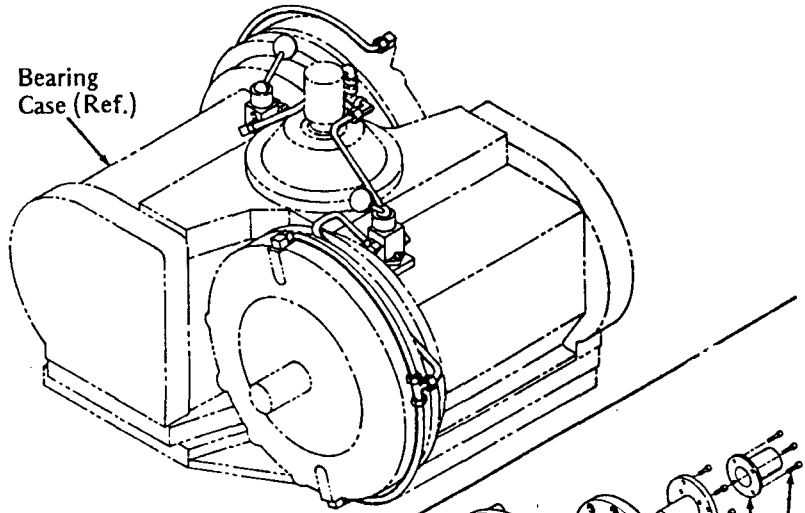
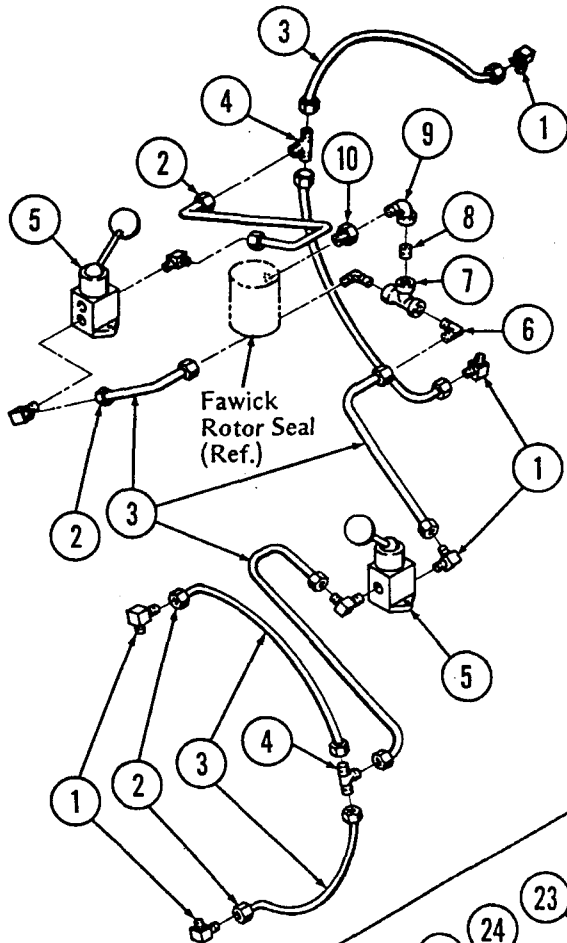
No. 60 Double Reel:
Spindle Assembly Parts List.

Note: See page 3 for exploded view of parts.

ITEM NO.	DESCRIPTION	QTY. REQ.
1.	Nut - Hex - Finished Jam (1"-14 R.H. Th'd.)	2
2.	Washer - Steel (1" I.D. x 3/16" Thk.)	2
3.	Handwheel - Oblong	2
4.	Nut - ("Elastic Stop" .50"-20)	2
5.	Washer - Steel (.50" I.D. x 1/8" Thk.)	2
6.	Spring ("Danly" No. 9-1608-11)	2
7.	Bar - Handle	2
8.	Pin - Roll ("Esna" No. 59-062-312-1500)	2
9.	Pin - Handle Spring	2
10.	Handle - Machine ("Cinn. Balcrank" No. 4-H-29427)	2
11.	Bearing - Thrust ("Aetna" No. E-15)	4
12.	Bearing - Needle ("RBC" No. SJ7255)	2
13.	Screw - ("Nylok" Soc. Hd. Cap 3/8"-16 x 1-1/8" Lg.)	8
14.	Retainer - Hdw. Bearing	2
15.	Collar - Bearing	2
16.	Sleeve - Spindle Front	2
17.	Pin - Roll ("Esna" No. 59-048-250-1750)	32
18.	Pin - Link - Sleeve	32
19.	Sub-Ass'y. - Arm Reinforced	8
20.	Bushing ("Super Oilite" Flange .88" x 1.12 x .93)	32
21.	Link (5.250 Centers)	16
22.	Ring - Retaining ("Waldes" Tru-Arc No. 5100-62)	32
23.	Pin - Roller - Lower (.62" x 4.78" Lg.)	16
24.	Bushing ("Oilite" No. AA-832-1 .62" x .88" x 1.0")	32
25.	Roller	16
26.	Locknut ("Mfgs. Std." No. AN21)	2
27.	Rod - Connecting	8
28.	Spider	2
29.	Sleeve - Spindle Rear	2
30.	Screw - Adjusting	2
31.	Key - Woodruff (No. C)	2
32.	Extension - Keeper Lock	8
33.	Extension - Keeper Adjusting	8
34.	Screw - ("Nylok" Soc. Hd. Cap 1/2"-13 x 1-1/2" Lg.)	16
35.	Retainer - Bearing - Front	2
36.	Seal - Oil ("C.R." No. 6008 6.0" x 7.5" x .75")	2
37.	Bearing - Roller ("Timken" No. 81600 Cone, No. 81962 Cup)	2
38.	Shaft - Spindle	2
39.	Screw - ("Nylok" Soc. Hd. Cap 1/4"-20 x 3/4" Lg.)	4
40.	Key - Spider	4
41.	Nut - Hex - Finished Jam (3/4"-16 R.H. Th'd.)	8
42.	Fitting - Grease	6

No. 60 Double Reel:
Pneumatic Tube Assembly,

Bearing Case (Ref.)



See page 6 for parts list.

No. 60 Double Reel:
Bearing Case
Assembly.

No. 60 Double Reel:
Pneumatic Tube Assembly
Parts List.

Note: See page 5 for exploded view of parts.

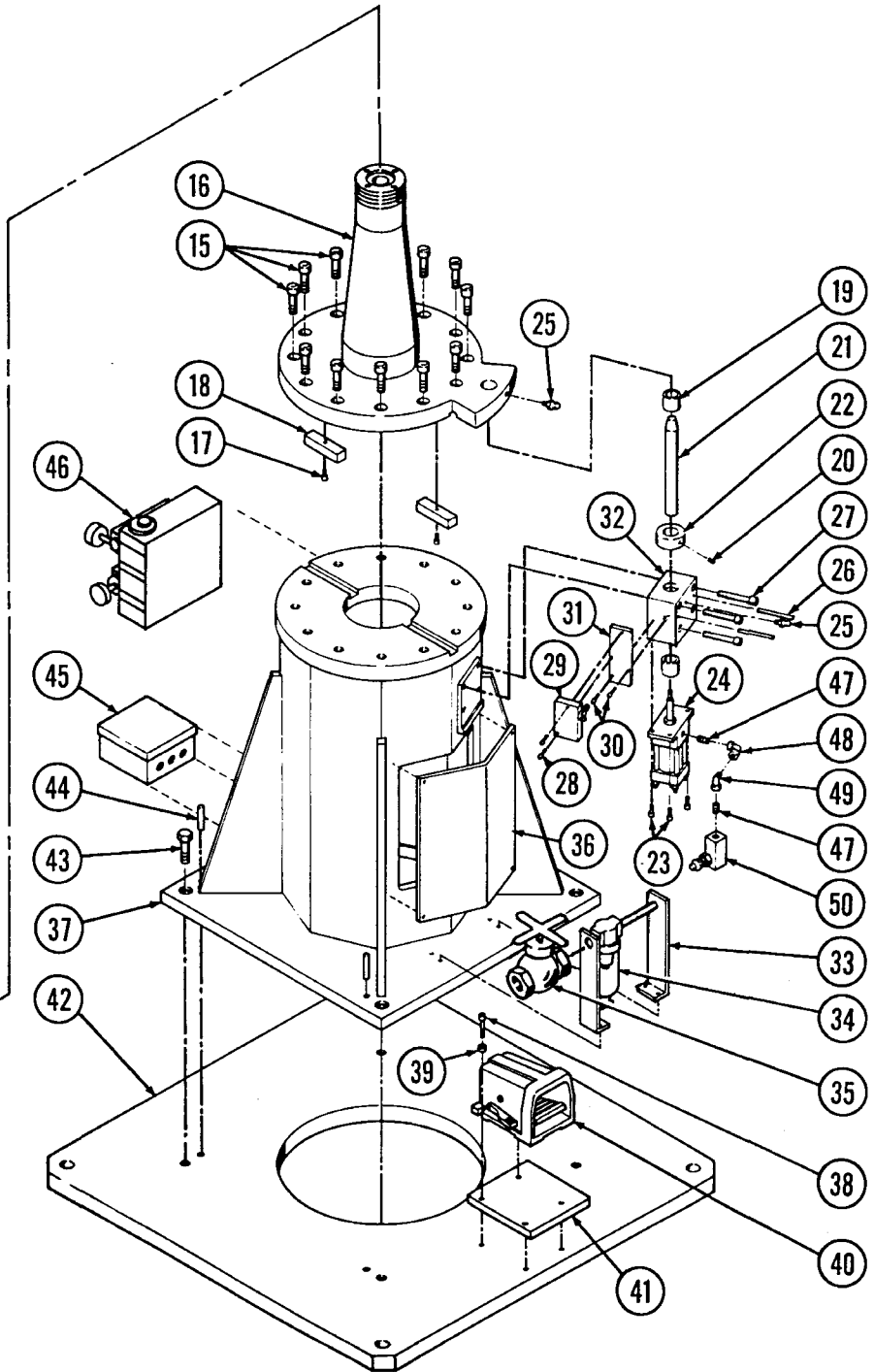
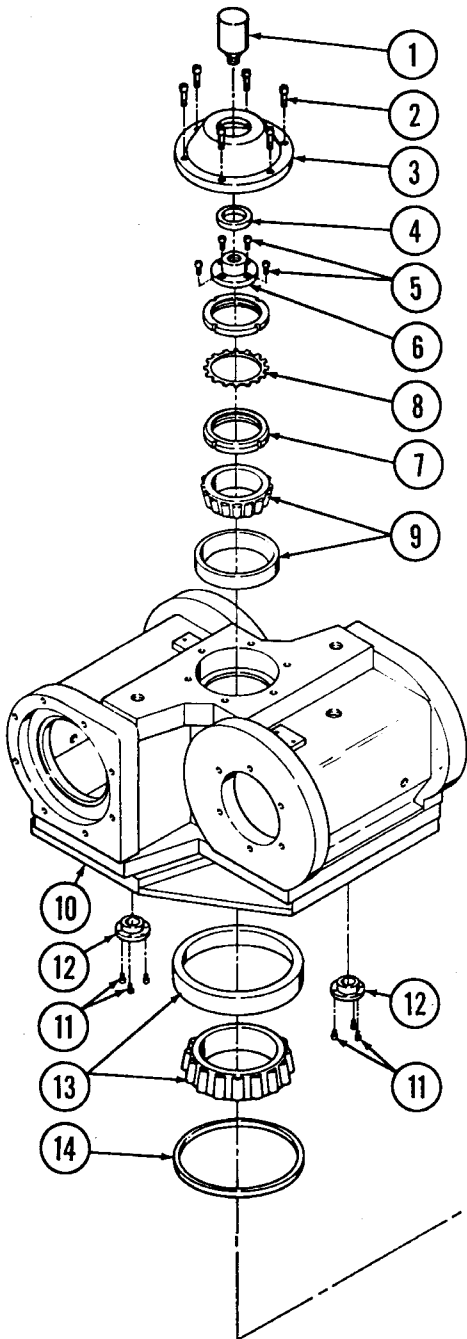
ITEM NO.	DESCRIPTION	QTY. REQ.
1.	Elbow - (90%, 1/4" Male)	8
2.	Fitting - Hose (1/4" Tubing x 1/4" Female)	16
3.	Tubing - (1/4" Copper) cut and bend to suit.	1
4.	Tee - (1/4" Male)	2
5.	Valve - 3 Way Hand (See item 8. Page 9, Pneumatic Diagram)	2
6.	Elbow - (90%, 1/4" Male)	2
7.	Tee - (1/4" Female)	1
8.	Nipple - (1/4" Male)	1
9.	Elbow - (90% Street, 1/4")	1
10.	Reducer - (1/2" Male to 1/4" Female)	1

Bearing Case
and Brake Assembly
Parts List.

ITEM NO.	DESCRIPTION	QTY. REQ.
1.	Shaft - Spindle (Reference)	2
2.	Case - Bearing	1
3.	Bearing - Roller ("Timken" No. 71450 Cone, No. 71750 Cup)	2
4.	Seal - Oil ("C.R." No. 38696 3.88" x 5" x .4531")	2
5.	Retainer - Rear Bearing	2
6.	Brake - Air - Single Disc ("I.C.C." No. RB115) (For Optional Double Disc Brake, Order I.C.C. No. RB215) (See SD-129)	2
7.	Hub - Brake	2
8.	Screw - ("Nylok" Soc. Hd. Cap .375"-16 x 1-1/4" Lg.)	8
9.	Nut - Adjusting Screw	2
10.	Screw - ("Nylok" Soc. Hd. Cap 3/8"-16 x 1-3/8" Lg.)	8
11.	Guard - Adj. Screw	2
12.	Key - Rectangular - Plain	2
13.	Plate - Name ("Littell")	2
14.	Plate - Name ("Reel Capacity")	1
15.	Plate - Name ("Reservoir")	2
16.	Plate - Name ("Drain")	2
17.	Screw - ("Nylok" Soc. Hd. Cap .375"-16 x 2-3/4" Lg.)	4
18.	Absorber - Shock ("Efdyn" No. ASB 1-1-PS-99)	2
19.	Pin - Dowel (.375" x 1-1/4" Lg.)	4
20.	Screw - ("Nylok" Soc. Hd. Cap .375"-16 x 1-1/4" Lg.)	2
21.	Key - Shock Absorber	2
22.	Ring - Lift ("Puritas")	2
23.	Valve - 3 Way Hand (See Item 8. Page 9. Pneumatic Diagram)	2
24.	Plug - Pipe - Vented (1-1/4" NPT)	2
25.	Gauge - Oil ("Gits" No. 4053, Style BW20)	2
26.	Screw - ("Nylok" Soc. Hd. Cap 1/2"-13 x 1-1/4" Lg.)	12
27.	Plug - Oil (For manual fill and drain 3/4" NPT.)	2

No. 60 Double Reel:
Base & Turret Assembly.

IMPORTANT
When ordering repair parts, specify item number plus serial number, and size of machine. Send all repair part orders to the Addison factory. Area code: (630) 916-6662, Repair Dep't.



See page 8 for parts list.

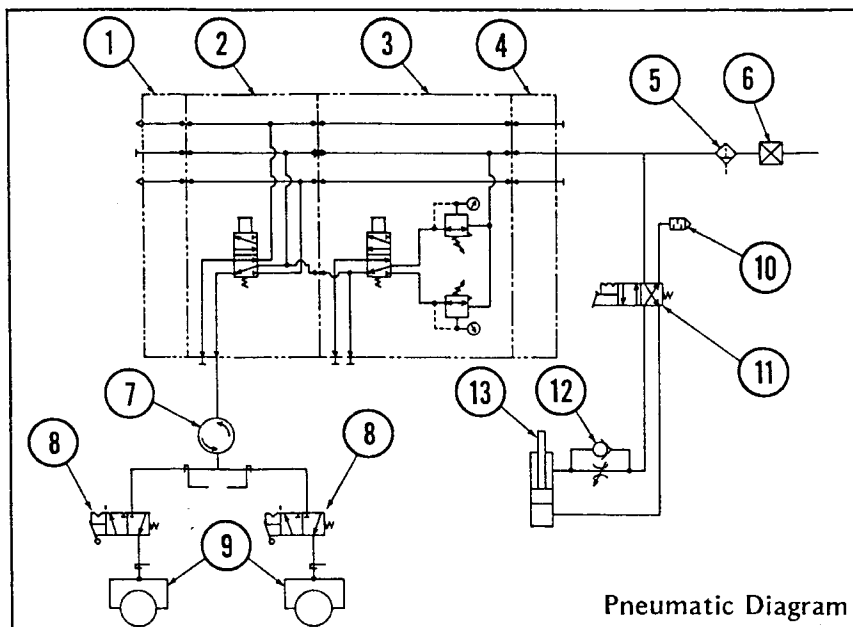
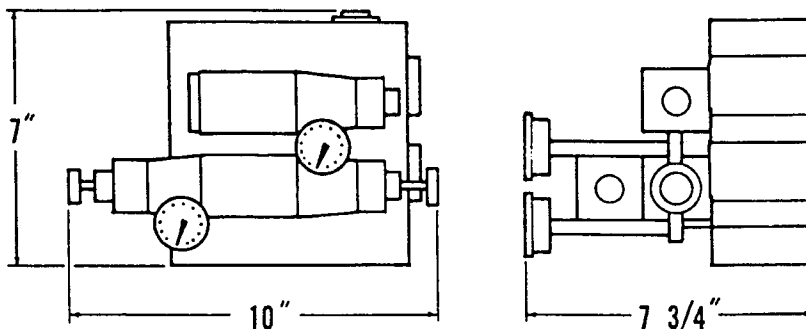
No. 60 Double Reel:
Base & Turret Assembly
Parts List.

Note: See page 7 for exploded view of parts.

ITEM NO.	DESCRIPTION	QTY. REQ.	ITEM NO.	DESCRIPTION	QTY. REQ.
1.	Rotor Seal ("Fawick" No. C-2)	1	26.	Pin - Dowel (.359" x 3-1/4" Lg.)	2
2.	Screw - ("Nylok" Soc. Hd. Cap .500"-13 x 1-1/2" Lg.)	6	27.	Screw - ("Nylok" Soc. Hd. Cap .500"-13 x 3-1/4" Lg.)	4
3.	Cap - Pivot Post	1	28.	Screw - ("Nylok" Soc. Hd. Cap No. 10-32 x 1-5/8" Lg.)	2
4.	Seal - Oil ("C.R." No. 19969)	1	29.	Switch - Limit ("Sq. D" No. 9007 Type AW-18-CA1)	1
5.	Screw - ("Nylok" Soc. Hd. Cap .375"-16 x 1" Lg.)	4	30.	Screw - ("Nylok" Soc. Hd. Cap .250"-20 x 3/4" Lg.)	2
6.	Mounting - Rotorseal	1	31.	Bracket - Limit Switch	1
7.	Locknut ("Mfgs. Std." No. AN22)	2	32.	Block - Cylinder Mounting	1
8.	Lockwasher ("Mfgs. Std." No. W22)	1	33.	Bracket - Filter	2
9.	Bearing - Roller ("Timken" No. 71450 Cone, No. 71750 Cup)	1	34.	Filter ("Norgren" Designer Series No. F12-300-M3TA - .375" Pipe Size)	1
10.	Case - Bearing (Reference)	1	35.	Valve ("Globe" - Customer to Supply - .5")	1
11.	Screw - ("Nylok" Soc. Hd. Cap .250"-20 x 5/8" Lg.)	3	36.	Plate - Cover	1
12.	Bushing - Index Pin	2	37.	Base - Reel	1
13.	Bearing - Roller ("Timken" No. 94700 Cone, No. 94113 Cup)	1	38.	Screw - ("Nylok" Soc. Hd. Cap .375"-16 x 1" Lg.)	4
14.	Wicking - Felt Strip ("Metric" .38 x .62 x 34.56 Lg. Firm With Sizing Added)	1	39.	Washer - Steel (.375" I.D.)	2
15.	Screw - ("Nylok" Soc. Hd. Cap .750"-10 x 2" Lg.)	12	40.	Valve ("Numatics" Air Foot Operated Spring Return Detented 4-Way No. 33FSD4440)	1
16.	Post - Bearing	1	41.	Block - Foot Valve Spacer	1
17.	Screw - ("Nylok" Soc. Hd. Cap .312"-18 x 1-1/4" Lg.)	2	42.	Sub-Plate - Reel Base	1
18.	Key - Post - Base	2	43.	Screw - ("Nylok" Soc. Hd. Cap .750"-10 x 2-1/2" Lg.)	4
19.	Bushing ("Bunting" No. E-838 With No. 2 Oil Groove)	2	44.	Pin - Dowel (.500" x 2-1/2" Lg.)	2
20.	Screw - Set (.375"-16)	1	45.	Box ("Hoffman" J.I.C. Oiltight with Std. Lift Off Hinge No. A606LP 6 x 6 x 4)	1
21.	Pin - Index	1	46.	Manifold - "Numatics" Brake Control (See Page 9)	1
22.	Collar - Index Pin	1	47.	Fitting - Male Pipe (3/8" NPTF)	2
23.	Screw - ("Nylok" Soc. Hd. Cap .312"-18 x 1" Lg.)	4	48.	Pipe - Elbow Joint - Female (3/8" NPTF)	1
24.	Cylinder ("Hannifin" Air Series - 2A, Style J - 2.0" Bore, 2.0" Stroke Rod No. 1 - Style No. 4 - .4375"-20 Th'd.)	1	49.	Pipe - Street Elbow (3/8" NPTF)	1
25.	Fitting - Grease	2	50.	Valve ("Pneutrol" No. EFL25-S- .375" Pipe Size)	1

No. 60 Double Reel:
Modular Pneumatic Unit and
Pneumatic Diagram

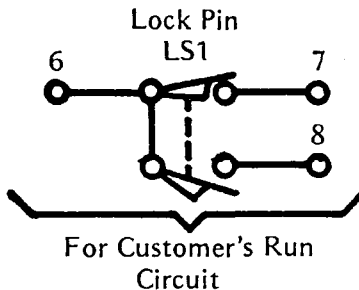
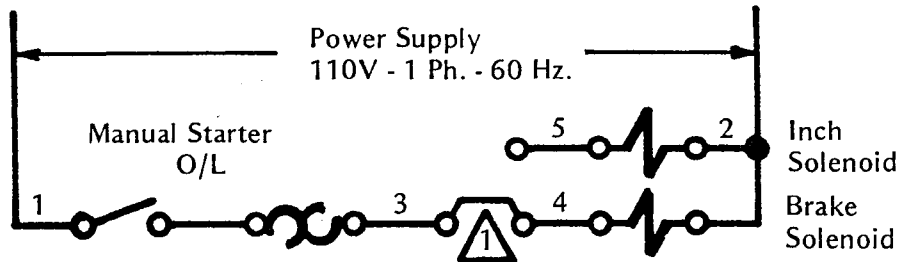
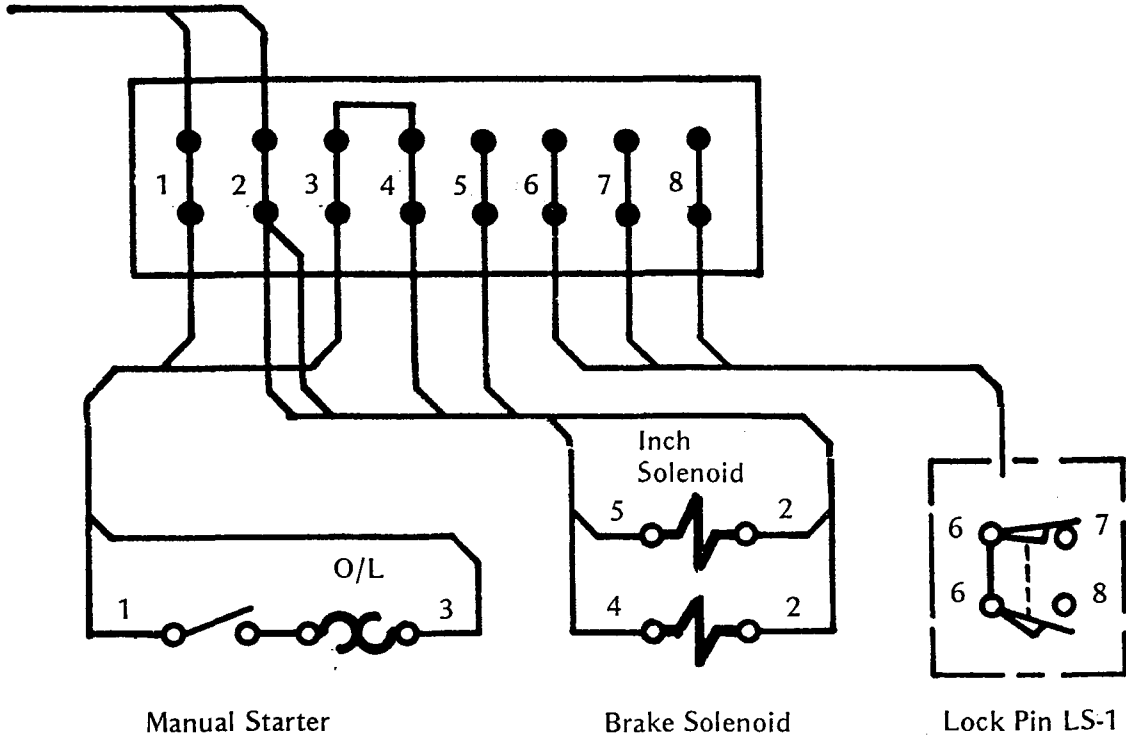
Overall dimensions
of pneumatic unit.
(Power Pack)



ITEM NO.	DESCRIPTION	QTY. REQ.	ITEM NO.	DESCRIPTION	QTY. REQ.
1.	Left end plate assembly "Numatics-Flexiblock" MK 15 Line #104-218B	1	7.	Rotor - Seal - "Fawick" Air #C2	1
2.	Valve block assembly "Numatics-Flexiblock" MK 15 Line #153SA416K, 110- 120 V., 60 HZ	1	8.	Valve - Air "Hannifin" 3 way locking type #C5 lever operated .25 NPT	2
3.	Valve block assembly (2 STA) "Numatics-Flexiblock" MK 15 Line #152SA400K & #152RT11BJ 1 Low 3-30 PSI & HIGH 10-130 PSI Regulator & Gage, 110-120 V., 60HZ.	1	9.	Brake - Air "I.C.C."	2
4.	Right end plate assembly "Numatics-Flexiblock" MK 15 Line #104-217B	1	10.	Muffler - Exhaust "Hannifin" #EM37 .375 NPT	1
5.	Filter - "Norgren" - Air #F12-300-M3TA .375 NPT	1	11.	Valve "Numatics" Air foot oper. #33FSD4440 .375 NPT	1
6.	Valve - Globe - Customer to supply	1	12.	Valve "Pneutrol" flow control #EFL-25-S .375 NPT	1
			13.	Cyl. - Air "Hannifin" Style "J" 2" bore X 2" stroke	1

No. 60 Double Reel:
Wiring Diagram.

Power Supply
110V - 1 Ph. - 60 Hz.



Note:  Customer's Contact To Apply
Full Brake For Stopping If Required.

**No. 60 Double Reel:
Lubrication System**

**Section Thru
Bearing Case**

①
Vented Pipe Plug
For Manual Oil
Fill (2 Req.)

Oil Sight Gauge
(For Visual Check
of Oil Level
Non-Circulating
System).

Fill to this
level with
"Mobil" Vacra
extra heavy
oil S.A.E. 40
or Equivalent
700 SUS @ 100° F.

Drain and filter
through 25 micron
element annually
for reuse.

②
Manual Sump
Drain Plug
(2 Req.)

Grease pack main
post bearing with
No. 1 EP N.L.G.I.
Grease at initial
assembly and major
overhaul only.

Lubricate
Monthly 2 Points
With N.L.G.I. No. 1
EP Grease

**Note: Lubricate 3 Points on Spindles
Monthly With N.L.G.I. No. 1
EP Grease. (For Location
Of Fittings See Page 3,
Item 42.) Typical for Each Spindle.**

Fitting Sizes	
①	- 1-1/4" N.P.T. Plug
②	- 3/4" N.P.T. Plug

