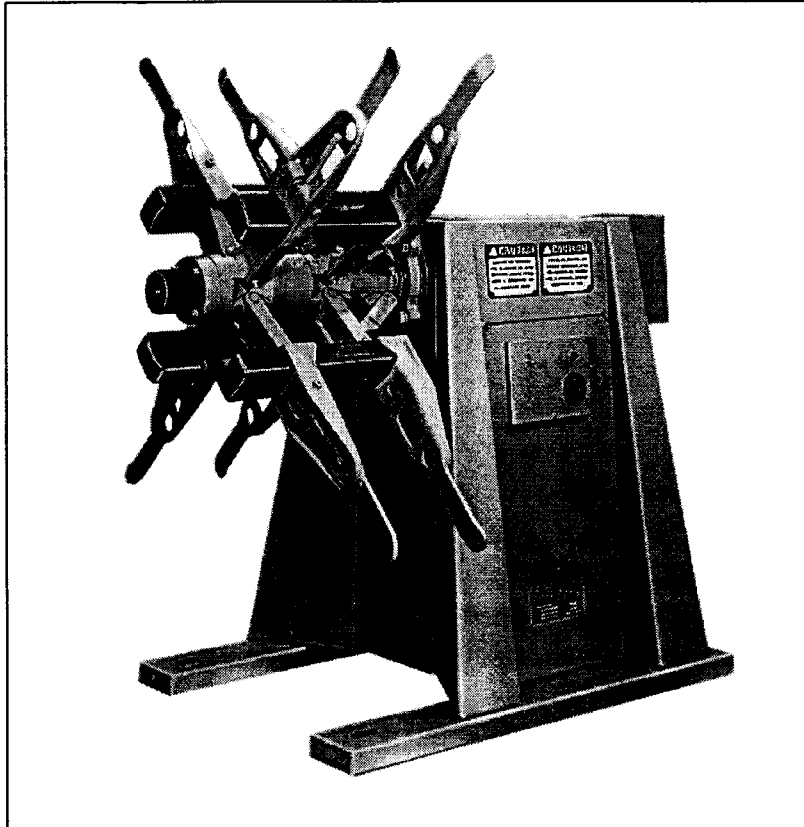


No. 20 Non-Motor Driven Reel: Automatic Centering

SERVICE BULLETIN
NUMBER SD-150



The following pages contain an exploded view
of the No. 20 Non-Motor Driven, Automatic
Centering Reel.

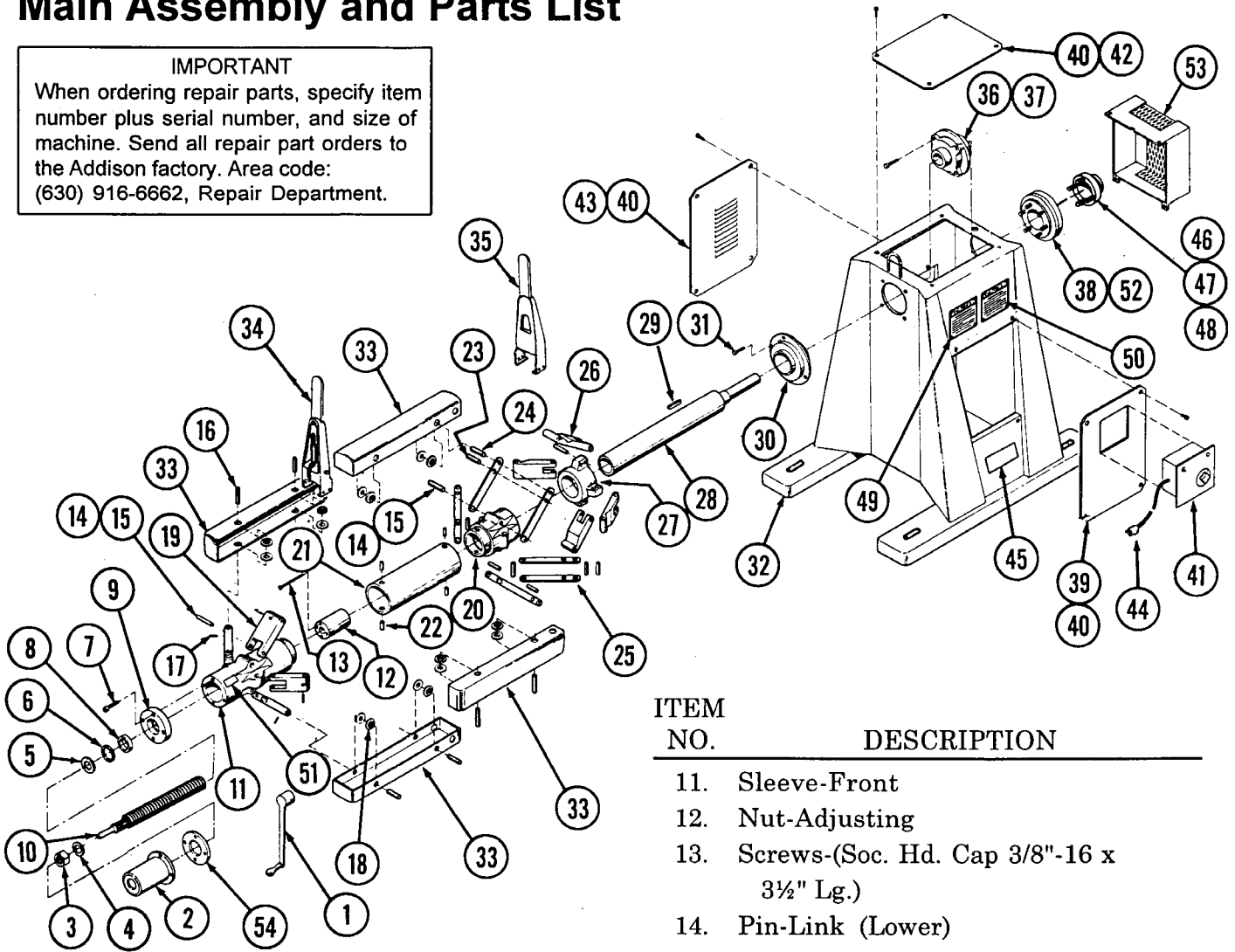
<u>INDEX</u>	<u>PAGE</u>
EXPLODED VIEW, MAIN ASSEMBLY	2
PARTS LIST FOR MAIN ASSEMBLY	2 - 3
WIRING DIAGRAM	4

LITTELL INTERNATIONAL, INC.
145 SWIFT ROAD, ADDISON, ILLINOIS 60101-1407, U.S.A.
AREA CODE: (630) 916-6662 LITTELL TELEFAX: (630) 916-6663
SERVICE DEPARTMENT TELEFAX: (630) 916-6664

No. 20 Non-Motor Driven Reel-Automatic Centering: Main Assembly and Parts List

IMPORTANT

When ordering repair parts, specify item number plus serial number, and size of machine. Send all repair part orders to the Addison factory. Area code: (630) 916-6662, Repair Department.



ITEM
NO.

DESCRIPTION

ITEM
NO.

DESCRIPTION

1. Wrench
2. Guard-Expansion Shaft
3. Nut-Jam (1"-14 Hex. R.H. Thread)
4. Washer-Steel (1.00" I.D.)
5. Washer-Bearing Thrust
6. Ring-Retaining ("WALDES" Tru-Arc #N5000-244)
7. Screws-(Soc. Hd. Cap. 3/8"-16 x 1" Lg.)
8. Bearing-Ball ("FAFNIR" #1206W)
9. Retainer-Bearing Adjusting Screw
10. Screw-Adjusting

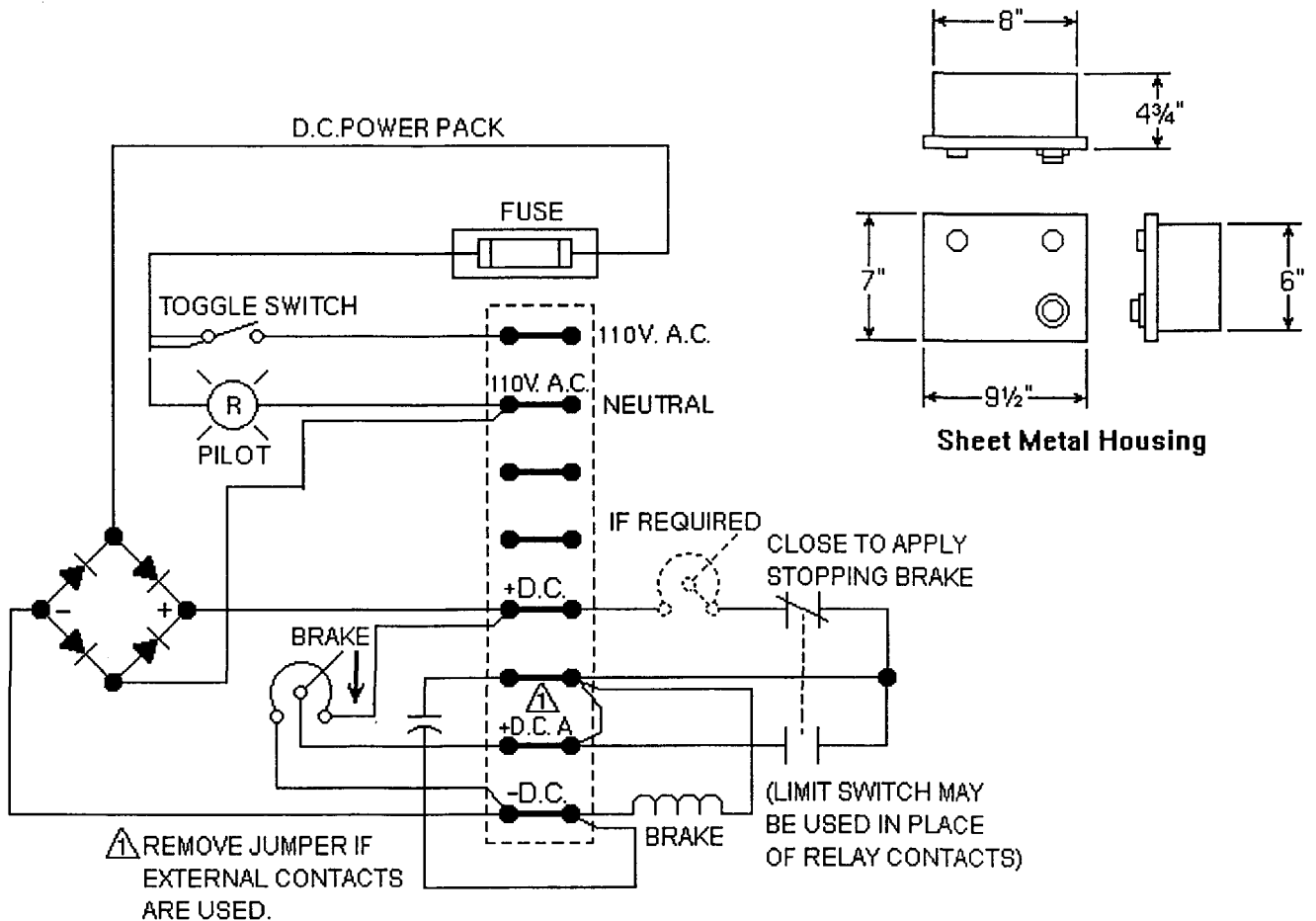
11. Sleeve-Front
12. Nut-Adjusting
13. Screws-(Soc. Hd. Cap 3/8"-16 x 3½" Lg.)
14. Pin-Link (Lower)
15. Ring-Retaining ("WALDES" Tru-Arc #5100-75)
16. Pin-Link
17. Pin-Roll ("ESNA" #59-048-250-1500)
18. Bushing-Arm
19. Link
20. Sleeve-Rear
21. Tube-Spacer
22. Pin-Roll ("ESNA" #59-062-312-750)
23. Pin-Link (Center)
24. Pin-Link (Upper)
25. Link
26. Link
27. Shoulder-Spindle
28. Shaft-Spindle

Cont'd on page 3.

No. 20 Non-Motor Driven Reel-Automatic Centering: Parts List (Cont'd)

ITEM NO.	DESCRIPTION
29.	Key-Feather (7/8" x 7/8" x 4" Lg.)
30.	Bearing-Ball ("SEALMASTER" #MFC-56)
31.	Screws (Soc. Hd. Cap 3/4"-10 x 1 1/2" Lg.)
32.	Base-Main
33.	Arm-Reel
34.	Extension-Front-Keeper
35.	Extension-Rear Keeper
36.	Bearing-Ball ("SEALMASTER" #MFC-28)
37.	Screws (Soc. Hd. Cap. 3/8"-16 x 3/8" Lg.)
38.	Brake-Electric ("WARNER" TB-1000)
39.	Plate-Cover Front
40.	Screws (Soc. Hd. Cap 1/4"-20 x 1/2" Lg.)
41.	Panel-Power Pack
42.	Plate-Cover Top
43.	Plate-Cover Rear
44.	Cord-Power ("PHALO" Plastic)
45.	Plate-Name-Reel and Coil Capacity
46.	Hub-Brake
47.	Pin-Drive
48.	Ring-Retaining ("WALDES" Tru-Arc #5100-62)
49.	Name Plate-Caution
50.	Name Plate-Caution
51.	Name Plate-Lub.-Spindle
52.	Box-Electric Conduit ("WARNER ELECTRIC")
53.	Guard-Electric Brake
54.	Plate-Retainer

No. 20 Non-Motor Driven Reel-Automatic Centering: Wiring Diagram



DEVICE	DESCRIPTION	LITTELL PART NO.	QTY.
TOGGLE SWITCH	"CARLING" CAT. AMP. SPST. 600C 20 AMP	245280	1
FUSE HOLDER	"LITTLEFUSE" NO. 357001	232035	1
FUSE	"BUSS" TYPE MDA 1 AMP 250 VOLT	096684	1
PILOT LIGHT	"MFG-STD" ELEC. (150V) NO. 1050AI-65	245269	1
SELENIUM RECTIFIER	SARKES TARZIAN (115V A.C. to 90 V D.C. 45 AMP) 3T26-5B1-AS	091643	1
CAPACITOR	"SPRAGUE" 6TM-P25 or "CORNELL-DUBI" PKM6P25 (.25MFD 600V. D.C.)	239653	1
RHEOSTAT and KNOB	"OHMITE" (50 WATTS 1000 OHMS) NO. 37399 and NO. 5150	090577	1
TERMINAL STRIP	"CINCH JONES" NO. 8-140 (8 TERMINALS)	229419	1
POWER PACK ENCLOSURE	"HUSSMAN" ENCLOSURE CORP. (8" W x 6" H x 4.50")	090587	1