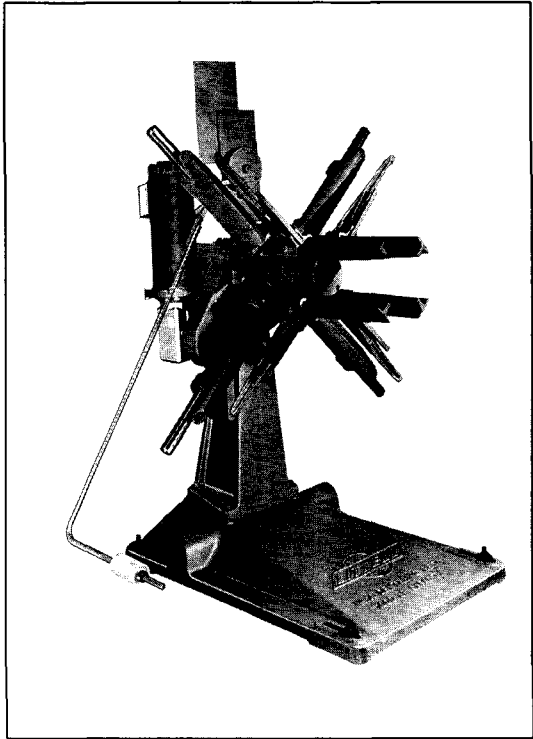
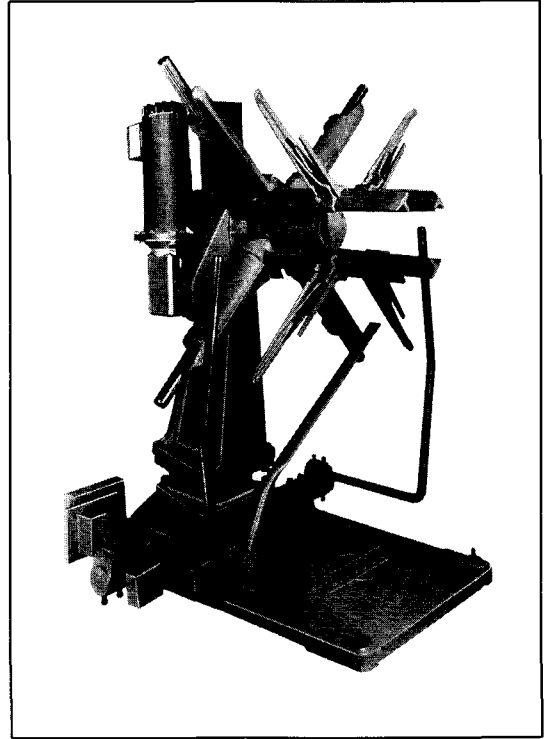


No. 10 MOTOR DRIVEN AUTOMATIC CENTERING REEL With arm control. With paddle control.

SERVICE BULLETIN
NUMBER SD-191



With arm control.



With paddle control.

INDEX	PAGE
Capacities	2
Operating and Maintenance Instructions	2
Parts List	3 & 4
Exploded View of No. 10 Reel with Arm Control	5
Exploded View of No. 10 Reel with Paddle Control	6
Electrical Schematic Diagram	7

CAPACITIES; OPERATING and MAINTENANCE INSTRUCTIONS

CAPACITIES

MAX. WEIGHT OF COIL	1,000 Lbs.
INSIDE DIAMETER	12" - 21"
MAX. OUTSIDE DIAMETER	48"
MAX. WIDTH	13"

OPERATING and MAINTENANCE INSTRUCTIONS

OPERATING INSTRUCTIONS

A. REMOVE KEEPERS.

Release keeper catch (1) and remove keepers (3) from arms. Place keepers in slots provided in keeper plate (56) while loading coil.

B. COLLAPSE ARMS.

- (1) Turn off motor.
- (2) Push inward thumb collar/plunger (31) & (33) and turn ratchet handle (30) to "Contract" and then release thumb collar/plunger.
- (3) Move ratchet handle in an up and down motion until the arms (5) are contracted to at least 1 to 2 inches smaller than the inside diameter of the coil to be loaded.

C. LOAD COIL.

- (1) Suspend coil hook from hoist and insert into coil.
- (2) Raise coil to proper height.
- (3) Move coil onto the arms.

D. ATTACH KEEPERS.

Snap keepers (3) into position on the arms so that the coil is tight against the back portion of the arms.

E. EXPAND ARMS.

- (1) Push inward thumb collar/plunger (31) & (33) and turn ratchet handle (30) to "Expand" position and then release thumb collar/plunger.
- (2) Move ratchet handle in an up and down motion until the coil is held firmly by all four of the arms. Remove hook.
- (3) Turn ratchet handle to the "Neutral" position.

F. ADJUST ROLLERS.

(For arm control only.) Position nylon rollers (74) above and in center of coil strip.

G. OPERATION.

(For arm control only.) To operate, place the toggle switch, located on the control arm bracket (82), in

the "On" position. Stock will be paid-off only when the control arm (75) is raised to a position where the motor starts. When there is an excess of stock, the arm will drop to a lower position and the motor will not operate or pay-off stock.

H. ADJUST CONFINING ARMS.

(For paddle control only.) Place confining arms (102) & (105) in proper position against the coil.

I. RELEASE PADDLE.

(Paddle control only.) Place control paddle (84) in center of coil strip and release control paddle latch (87).

J. OPERATION.

(Paddle control only.) To operate, place the toggle switch, located on the motor mounting bracket (54), in the "On" position. Stock will be paid-off only when the control paddle (84) is raised to a position where the motor starts. When there is an excess of stock, the weight of the outside loop will force the paddle to the down position and the motor will not operate or pay-off stock.

K. "V" BELT ADJUSTMENT.

The position of the electric motor (51) can be altered to obtain the proper "V"-belt (47) tension. This is accomplished by raising or lowering the motor on the motor mounting bracket (54).

MAINTENANCE INSTRUCTIONS

All Littell Reels are of very rigid construction and, if the capacities are not exceeded, will give years of trouble-free service. Proper lubrication is the only maintenance required. Oil and grease must be applied at the points shown on the exploded view drawing. The proper oil level must be maintained in the electric motor gear head box (51).

PARTS LIST

ITEM NO.	DESCRIPTION	ITEM NO.	DESCRIPTION
1	Catch Keeper	45	Pin, Roll
2	Spring - 1½", "DANLY" No. 9-1206-11	46	Guard, Belt
3	Keeper	47	Belt V, "BROWNING" No. B42 (Matched)
4	Pin, Roll - No. 59-048-250-1500	48	Bushing, "BROWNING" No. P1, 1.000" Bore
5	Arms, Standard Reel	49	Sheave, "BROWNING" No. 2TB54
6	Keys, Straight Arm	50	Key .250"
7	Arms, Straight	51	MOT - ½ - GH - DR: "GRAHAM TRANSMISSION" ½ H.P. DC Motor, Model No. 520502145-0616518 1800 R.P.M. With "WINSMITH" Reducer
8	Collar, Steel "HALLOWELL", 1.38" I.D.	52	Adaptor, Motor Mounting
9	Bushing, Thrust Washer	53	Bolt, Sq. Hd. Mach. 1.12"-7 x 7" Lg.
10	Screw and Pinion	54	Bracket, Motor Mounting
11	Bearing, Thrust "AETNA" No. E-15	55	Nut, Hex. Full 1.125"-7
12	Pin, Roll "ESNA", No. 59-062-312-2375	56	Bracket, Keeper Plate
13	Cap, Spindle	57	Column, Base
14	Nut, Lock "MFGRS STD", No. N-07, 1.376" - 18 Th'ds	58	Base
15	Washer, Lock "MFGRS STD." No. W- 07	59	Cover, Box, Potentiometer
16	Bearing, Roller "TIMKEN" No. 2729 - 2788	60	Screw
17	Fitting, Straight Hyd. Drive Type "ALEMITE" No. 1743-B (With Ball Check)	61	Rheostat, Bourns "MFGRS." Type 66575-1-502-5K OHM-RES 1 Watt, "ALLIED" Stock No. 46D7654C
18	Hub	62	Bracket, Reactor
19	Pulley, Driven	63	Set Screw, Brass
20	Gear, Bevel	64	Shaft, Reactor
21	Washer, Thrust	65	Bearing "NICE" No. 1604 D.C.
22	Ring, Retainer "SPIROLOX" No. RST-5000, Series "T"	66	Retainer, Bearing
23	Shaft, Spindle	67	Washer "B.G.W." Hardened Steel Thrust Bearing
24	Key, Feather .187" x .094"	68	Pin, Roll
25	Bearing, Roller "TIMKEN", No. 432-438	69	Gear, Spur "B.G.W." H2412, .250"/.251" Bore No. K.W.
26	Ring, Retaining "WALDES" Tru-Arc No. 5100-350	70	Switch, Toggle "ALLEN-BRADLEY" Bulletin No. 600
27	Pin, Cotter	71	Plate, Caution Instruction
28	Pin, Clevis "DORMAN" No. 120-003 .31" x 1.25"	72	Plate, Caution Safety
29	Pawl, Ratchet		
30	Ratchet handle		
31	Thumb Collar		
32	Collar, Ratchet		
33	Plunger		
34	Pin, Lock		
35	Spring, Ratchet		
36	Pin, Dowel		
37	Plate, Name, Warning		
38	Spacer		
39	Screw, Set .31" x .5" Lg.		
40	Ratchet Spring Latch		
41	Ball, Steel .25"		
42	Detent Plunger		
43	Head, Ratchet		
44	Knuckle, Female		

**Parts List Continued For No. 10 Reel with
ARM CONTROL ONLY**

ITEM NO.	DESCRIPTION
73	Collar, Steel, "HALLOWELL"
74	Roller, Nylon
75	Arm, Control
76	Support, Control Arm
77	Bolt
78	Bushing, "OILITE" No. FF-723-5

PARTS LIST (Cont'd)

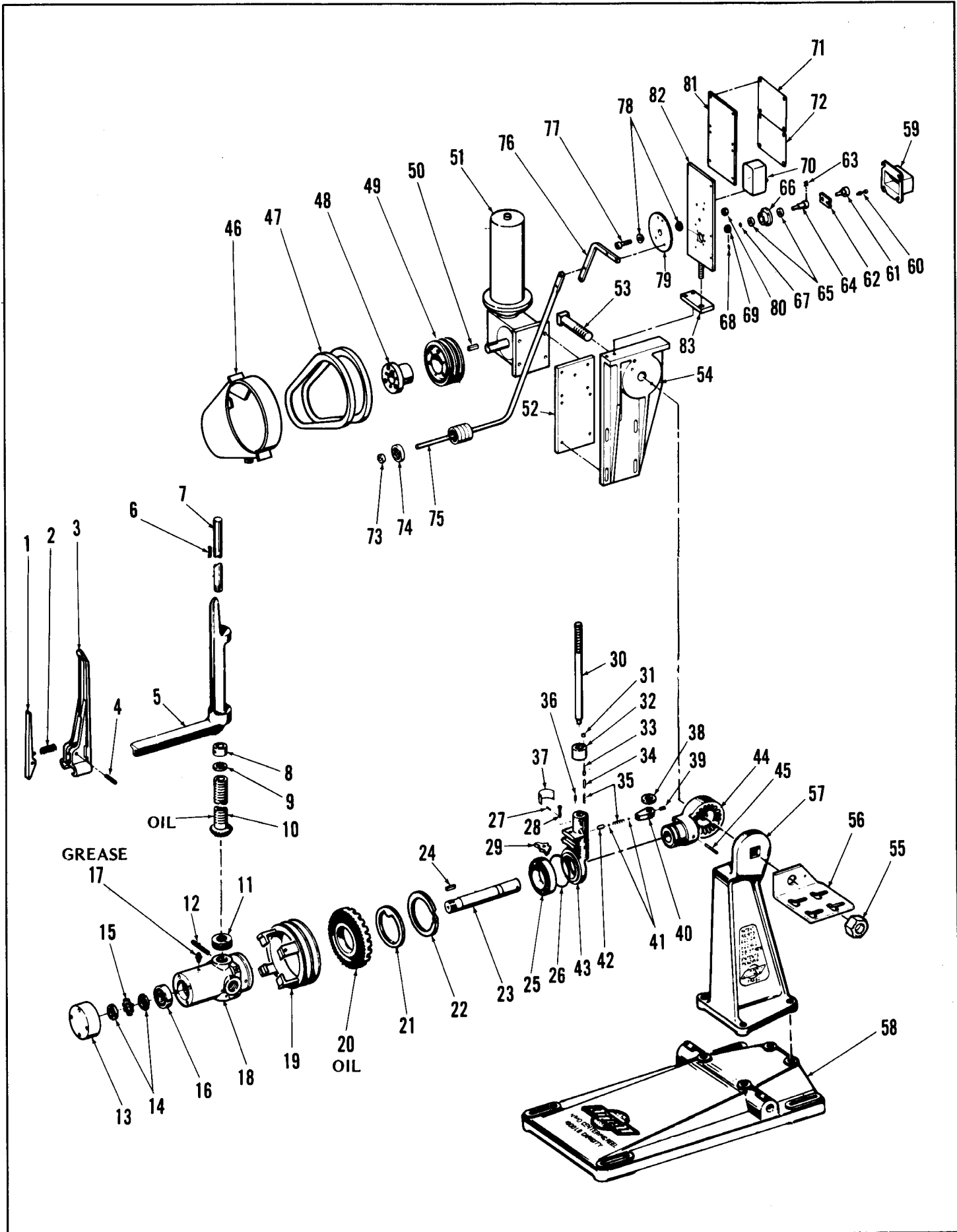
ITEM NO.	DESCRIPTION
79	Gear, Control Arm
80	Nut, hex
81	Bracket, Caution Plates
82	Bracket, Control Arm
83	Plate, Mounting

**Parts List Continued For No. 10 Reel with
PADDLE CONTROL ONLY**

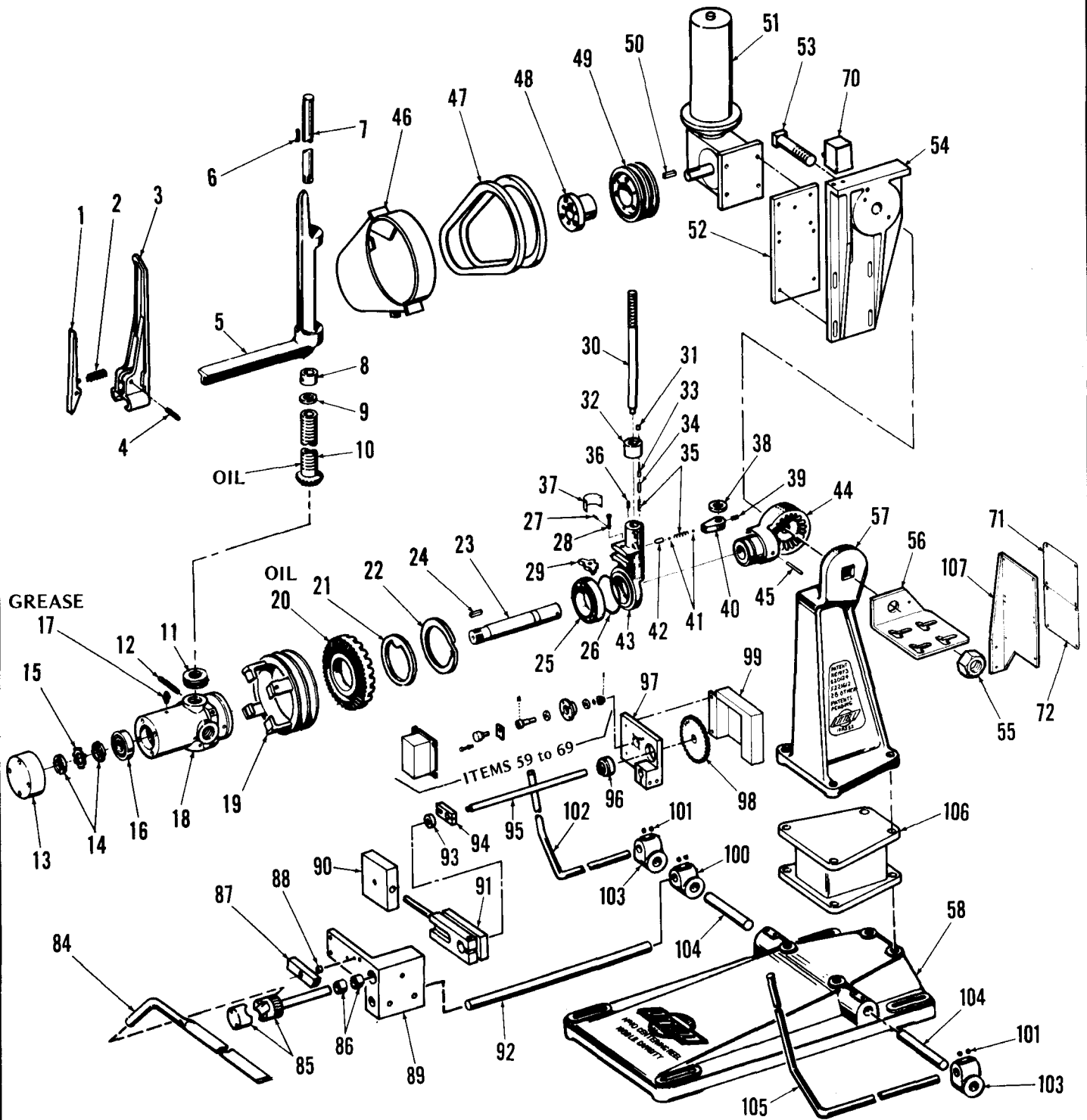
ITEM NO.	DESCRIPTION
84	Paddle, Control
85	Pivot Pin
86	Bushing, Bunting No. C-345, .875" I.D., N.O.G.
87	Control Arm Latch
88	Latch Sleeve
89	Bracket, Switch

ITEM NO.	DESCRIPTION
90	Counter Weight
91	Lever, Switch
92	Shaft Lifter
93	Bearing, "NEW DEPARTURE" No. Z99500
94	Guide, Lever
95	Pin, Guide Roll
96	Bearing, "NICE" No. 7608 - DLG
97	Bracket, Potentiometer
98	Gear, Paddle Control
99	Guard, Potentiometer
100	Knuckle, Shaft, Lifter
101	Button, Brass
102	Arm, Confining, L.H.
103	Knuckles, Confining Arm
104	Arm, Support, Short
105	Arm, Confining, R.H.
106	Spacer, Base, 6" High
107	Bracket, Caution Plates

EXPLODED VIEW OF NO. 10 REEL with ARM CONTROL



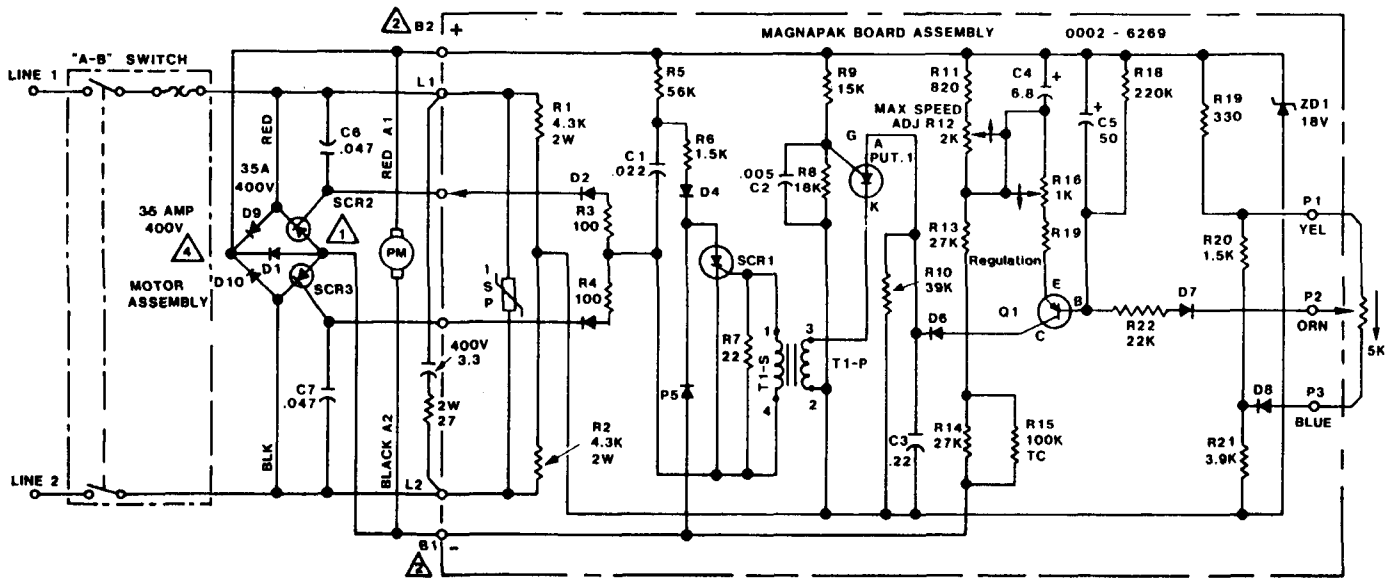
EXPLODED VIEW OF NO. 10 REEL with PADDLE CONTROL



IMPORTANT

When ordering repair parts, specify item number plus serial number, and size of machine. Send all repair part orders to the Addison factory. Area code: (630) 916-6662, Repair Dep't.

GRAHAM DRIVE



NOTES:

- 1 - RESISTORS 10% ½ W. EXCEPT AS NOTED.
- 2 - CAPACITORS IN MFD SEE DWGS. FOR RATINGS.
- 3 - DIODES 1 AMP. EXCEPT AS NOTED.

- 1 POWER SCRS ½ H.P. AND OVER ARE 35 AMP. 500 VOLT UNDER ½ H.P. ARE 16 AMP. 400 VOLT.
- 2 TO REVERSE ROTATION INTERCHANGE B1 & B2.
- 3 FOR FASTER RESPONSE DECREASE C5 TO 6.8 MFD AND JUMPER R22.
- 4 CLAMPING DIODE IS 35 AMPS. WHEN MOUNTED ON HEAT SINK & 3 AMPS. WHEN MOUNTED ON P.C. BOARD.

LITTELL INTERNATIONAL, INC.

145 SWIFT ROAD, ADDISON, ILLINOIS 60101-1407, U.S.A.
 AREA CODE: (630) 916-6662 LITTELL TELEFAX: (630) 916-6663
 SERVICE DEPARTMENT TELEFAX: (630) 916-6664