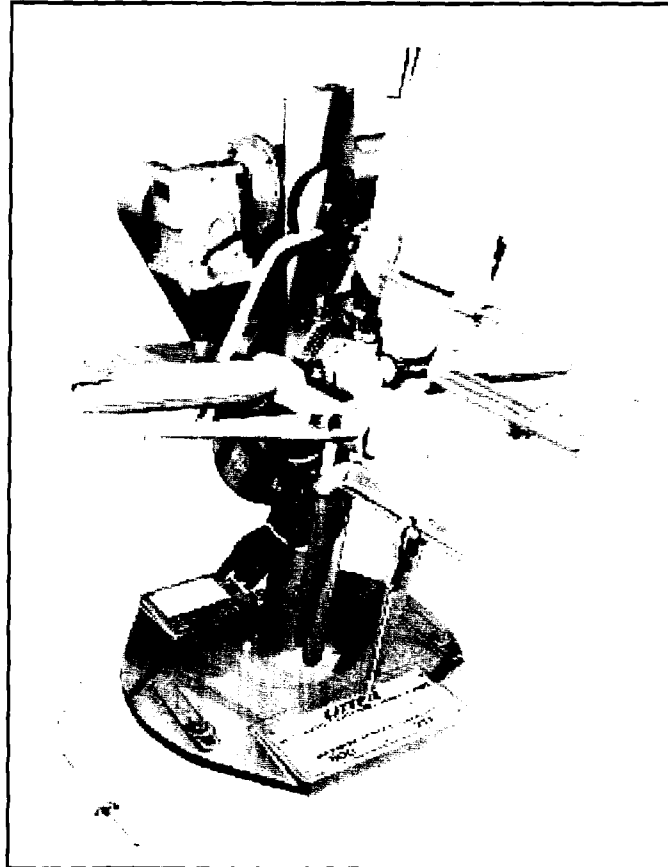


Number 5G Motor Driven Automatic Centering Reel

SERVICE BULLETIN
NUMBER SD-217



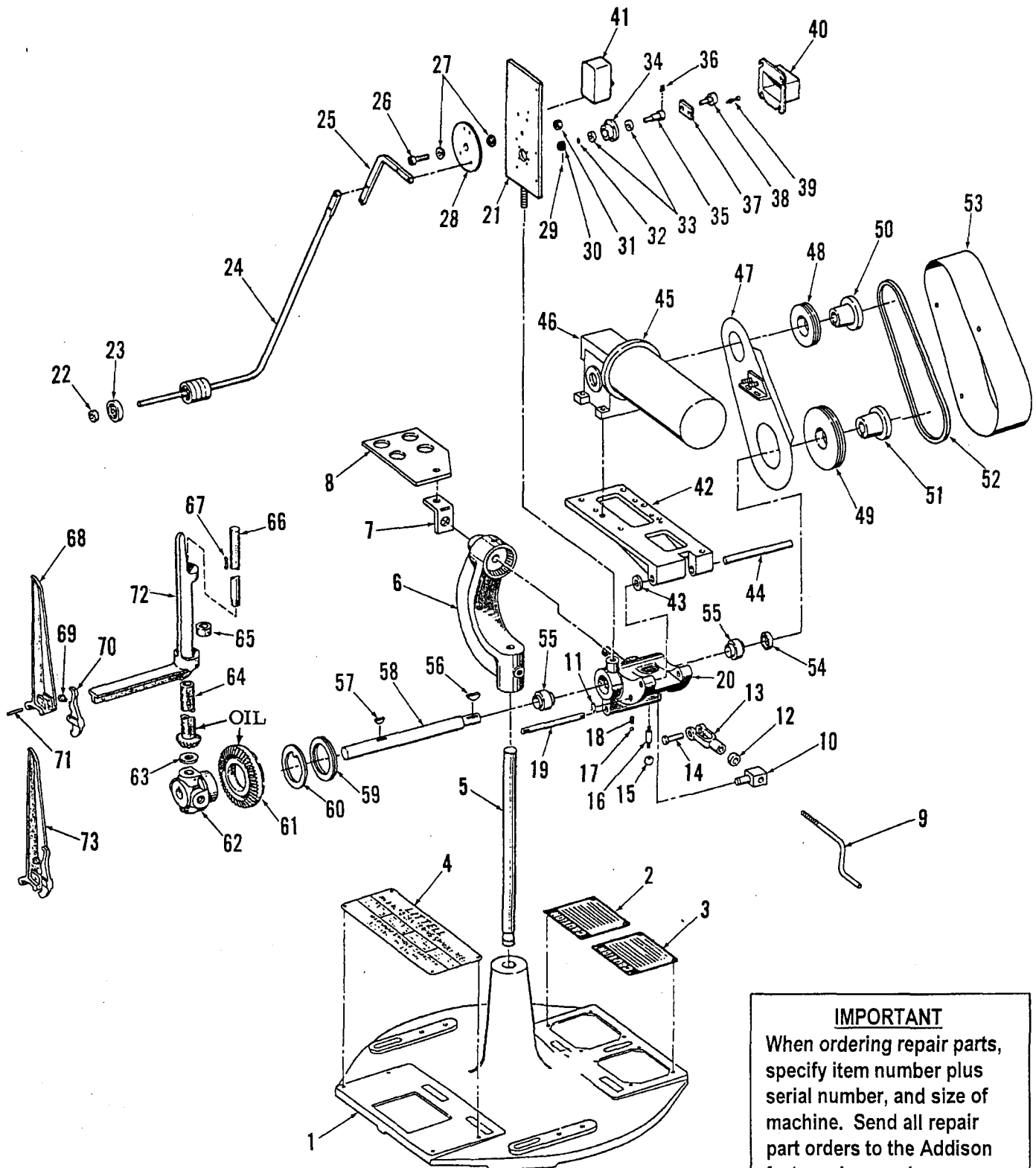
CAPACITIES

MAX.WEIGHT OF COIL	INSIDE DIA.	MAX. OUTSIDE DIA.	MAX. WIDTH
600 lbs.	10" - 20"	46"	10"

<u>INDEX</u>	<u>PAGE</u>
Exploded View Main Assembly	2
Parts List	3
Operating Instructions	4

LITTELL INTERNATIONAL, INC.
145 SWIFT ROAD, ADDISON, ILLINOIS 60101-1407, U.S.A.
AREA CODE: (630) 916-6662 LITTELL TELEFAX: (630) 916-6663
SERVICE DEPARTMENT TELEFAX: (630) 916-6664

EXPLODED VIEW MAIN ASSEMBLY



IMPORTANT
 When ordering repair parts, specify item number plus serial number, and size of machine. Send all repair part orders to the Addison factory. Area code: (630) 916-6662, Repair Dep't.

PARTS LIST

ITEM NO.	DESCRIPTION	ITEM NO.	DESCRIPTION
1	Base	38	Rheostat, Bourns
2	Plate, Caution Safety	39	Screw
3	Plate, Caution Instruction	40	Cover, Box, Potentiometer
4	Plate, Name Capacity	41	Switch, Toggle
5	Post	42	Platform, Motor
6	Female Knuckle	43	Washer, Spacer
7	Bracket, Keeper Plate	44	Shaft, Platform, Motor
8	Plate, Keeper	45	Motor, (Graham) Transmission
9	Adjusting Screw	46	Reducer, (Winsmith)
10	Pivot, Adjusting Screw	47	Guard, Sheave, Rear
11	Retaining Ring	48	Sheave, Drive
12	Collar, Adjusting Screw	49	Sheave, Driven
13	Clevis	50	Bushing, Split Taper, Drive
14	Pin, Clevis	51	Bushing, Split Taper, Driven
15	Knob, Shifter Pin	52	Belt, "V" Type
16	Shifter Pin	53	Guard, Sheave, Front
17	Steel Ball Detent	54	Collar
18	Spring, Ball Detent	55	Bearing, Ball (Sealmaster)
19	Lock Pin	56	Key, #25 Woodruff
20	Swivel Body	57	Key, #15 Woodruff
21	Bracket, Control Arm	58	Shaft, Spindle
22	Collar, Steel	59	Ring, Retaining
23	Roller, Nylon	60	Washer, Thrust
24	Arm Control	61	Gear, Bevel
25	Support, Arm Control	62	Hub, Spindle
26	Bolt	63	Bearing, Thrust
27	Bushing, (Oilite) No. FF-723-5	64	Screw and Pinion
28	Gear, Control Arm	65	Collar
29	Pin, Roll	66	Arm, Straight
30	Gear, Spur	67	Key, Straight Arm
31	Nut, Hex	68	Keeper
32	Washer, Steel Thrust Bearing	69	Keeper Spring
33	Bearing, Ball (Nice)	70	Keeper Catch
34	Retainer, Bearing	71	Roll Pin
35	Shaft, Reactor	72	Arm
36	Set Screw, Brass	73	Keeper Assembly
37	Bracket, Reactor		

OPERATING INSTRUCTIONS

OPERATING INSTRUCTIONS

A. REMOVE KEEPERS. Release keeper catch (70) and remove keepers (73) from arms. Place keepers in slots provided in keeper plate (8) while loading coil.

B. COLLAPSE ARMS.

(1) Slide shifter pin (16) forward so that lock pin (19) engages slot in bevel gear (61) to prevent gear from turning.

(2) Rotate spider in a clockwise direction until the arms (72) are contracted to at least 1 to 2 inches smaller than the inside diameter of the coil to be loaded.

C. ATTACH KEEPERS. Snap keepers (73) into position on the arms so that the coil is tight against the back portion of the arms.

D. EXPAND ARMS.

(1) Slide shifter pin (16) forward so that lock pin (19) engages slot in bevel gear (61) to prevent gear from turning.

(2) Rotate spider in a counterclockwise direction until the coil is held firmly by all four of the arms.

(3) Disengage lock pin (19) from bevel gear (61) by sliding shifter pin (16) rearward to its central position in swivel body (20).

E. ELECTRICAL OPERATION.

(1) Automatic Operation. Place the motor switch in the "Automatic" position. Stock will be paid-off only when the arm loop control is raised to a position where the motor starts. When there is an excess of stock or when the control is in the down position the motor will not operate or payoff stock.

(2) Hand Operation. Place the motor switch in the "Hand" position. The motor will operate continuously and payoff stock until the switch is returned to the "Off" position.

NOTE

The No. 5G Motor Driven Reel supplied with 110 volt motors is equipped with an On-Off toggle switch only. The above instructions apply only to reels supplied with 220/440 volt, 60 cycle motors.

F. "V" - BELT ADJUSTMENT. The position of the electric motor (34) can be changed to tighten or loosen "V" - belt (52) to obtain the proper tension. On the No. 5G Motor Driven Reel this is accomplished by turning the adjusting crank screw (9).

MAINTENANCE INSTRUCTIONS

All Littell Reels are of very rigid construction and, if the capacities are not exceeded, will give years of trouble-free service. Proper lubrication is the only maintenance required. Oil must be supplied at the points shown on the exploded view drawing. The proper oil level must be maintained in the electric motor gear head box (45).

LITTELL INTERNATIONAL, INC.

145 SWIFT ROAD, ADDISON, ILLINOIS 60101-1407, U.S.A.
AREA CODE: (630) 916-6662 LITTELL TELEFAX: (630) 916-6663
SERVICE DEPARTMENT TELEFAX: (630) 916-6664