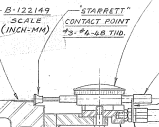
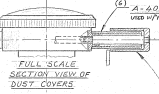
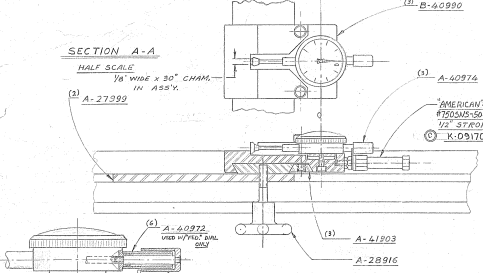


DATE	BY	CHKD	APP'D
12-22-75	W. J.
12-23-75
12-24-75
12-25-75
12-26-75
12-27-75
12-28-75
12-29-75
12-30-75

SECTION A-A

HALF SCALE
 1/8" WIDE x 30" CHAMF
 IN 1500"



SECTION B-B

HALF SCALE

- (1) A-40978
- (2) A-40997
- (3) 1/8" - 18 SEC. NO. CAP SCREW - 1 1/2"
- (4) 1/4" - 20 SEC. NO. CAP SCREW - 7/8"
- (5) NUT - "T" S&T - "METRIMM" #70462 WITH 5/8" B TWD. K-052477

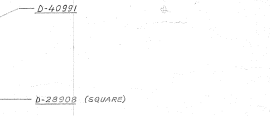
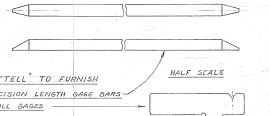
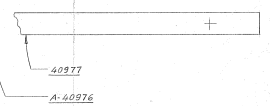
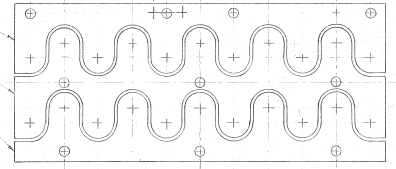
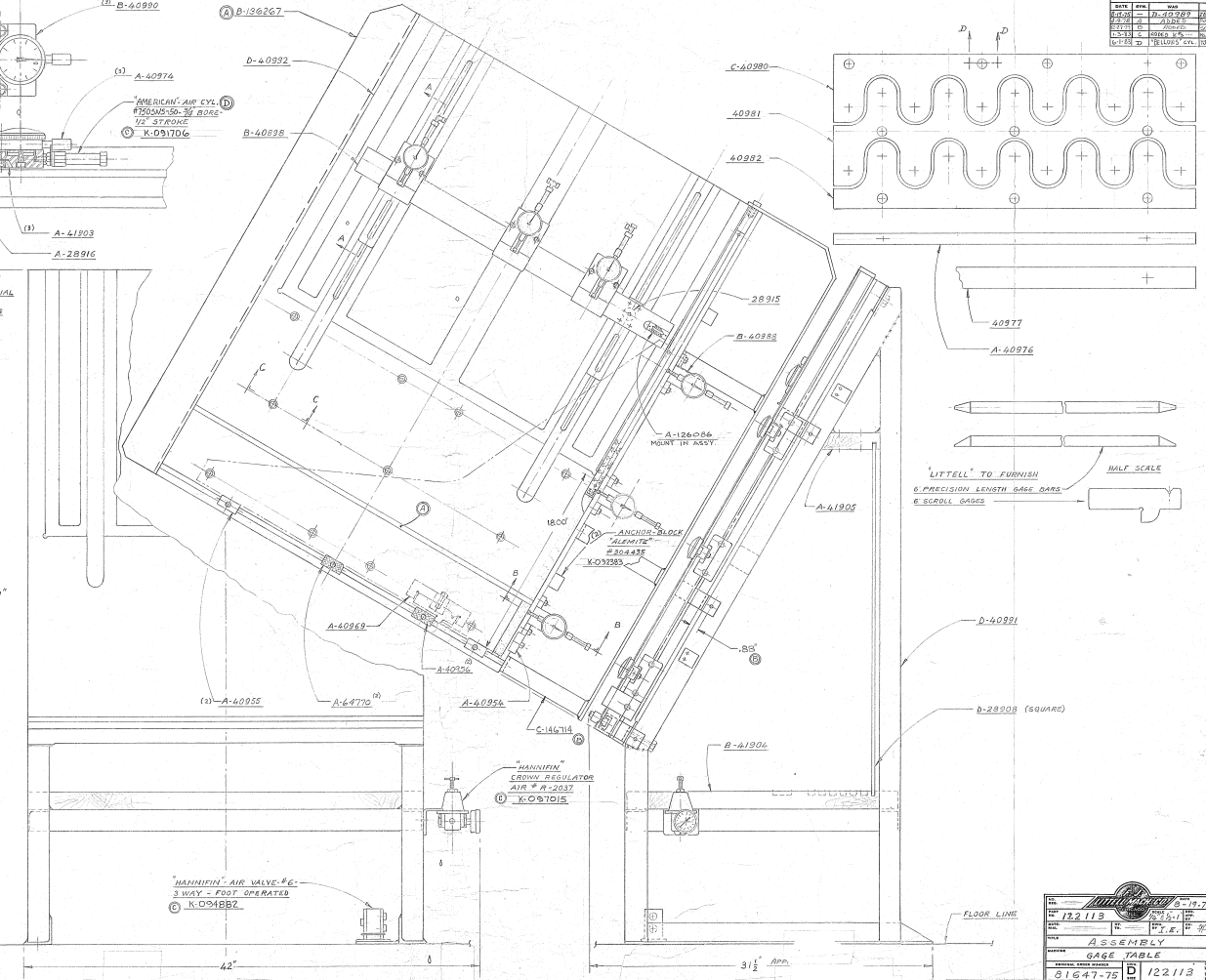
SECTION C-C

FULL SCALE



SECTION D-D

FULL SCALE



NO.	REV.	DATE	BY	CHKD.	APP'D.
122113	1	12-22-75	W. J.
122113	2	12-23-75
122113	3	12-24-75
122113	4	12-25-75
122113	5	12-26-75
122113	6	12-27-75
122113	7	12-28-75
122113	8	12-29-75
122113	9	12-30-75