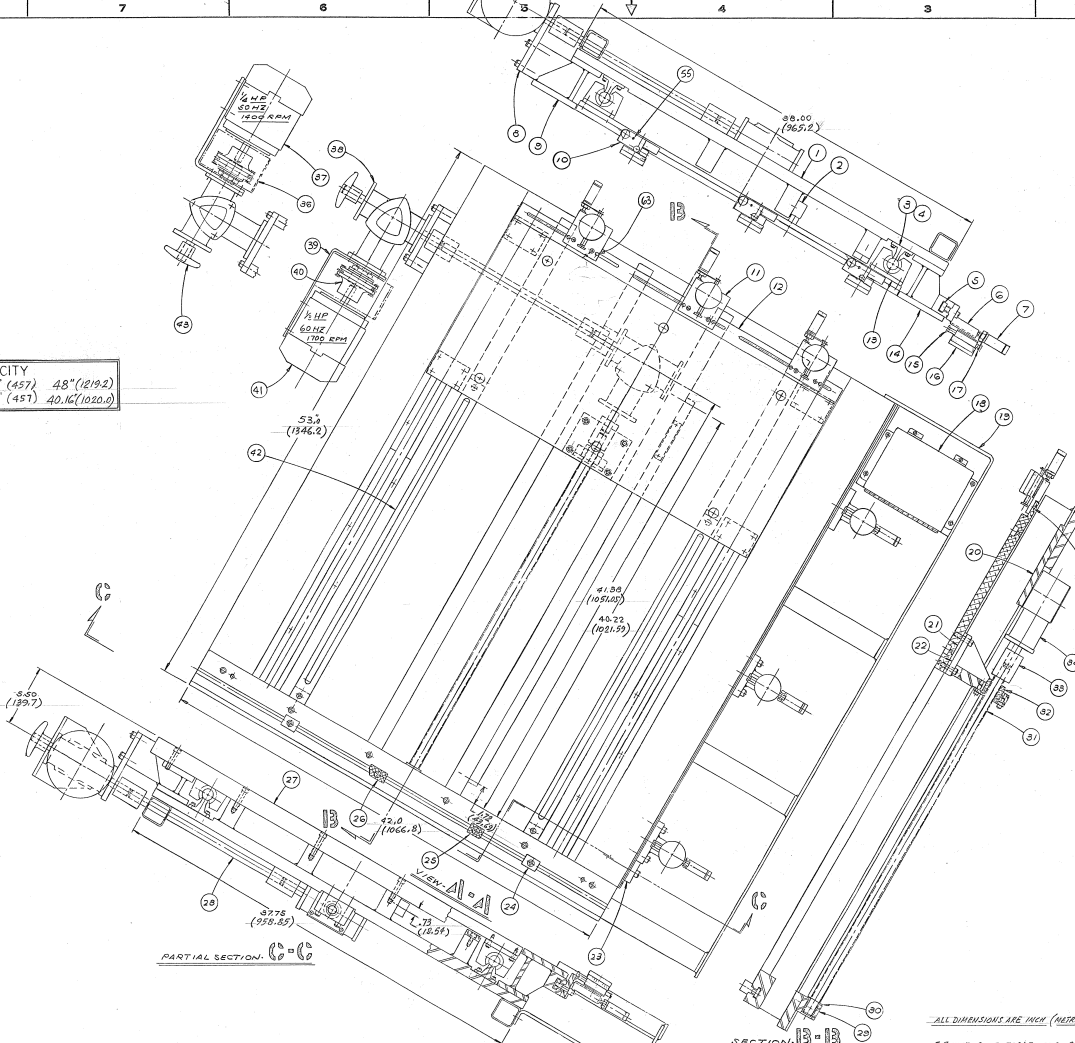
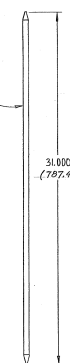


SHEET CAPACITY
 LENGTH = 18" (457) 48" (1219.2)
 WIDTH = 18" (457) 40.16" (1020.0)



PARTIAL SECTION $\phi = \phi$

SECTION - $\frac{1}{2}$ - $\frac{1}{2}$

ALL DIMENSIONS ARE INCH (METRIC)
 FOR INCH GAGE TABLE SEE D-264200

ITEM NO.	QTY	PART NO.	DESCRIPTION	DRWG NO.
63	4	K-251743	DRWEL PIN 3/16" Ø 1.50" L6	
62	18	K-034878	MAGNET-BLINDING "RM-2802-T"	
61	1	A-040878	BAR-GRID 1"	
60	1	K-040877	BAR-GRID 2"	A-040878
59	1	K-26214	BAR-GRID 3"	A-040878
58	1	C-040868	EXTENSIONS-GRID	
57	6	A-228281	KNOB-HAND	
56	1	K-283363	COUNTDOWN-READOUT	
55	6	K-23498	ROLL PIN 1/16" x 1/16" L4	
54	1	A-040858	HOLDER-SQUARE	
53	2	A-287191	BLOCK-MANIFOLD	
52	1	D-028280	SQUARE-ADJUSTING	
51	1	K-028082	WALVE-AIR 3/16" x 1/16" x 1/16"	
50	1	K-028340	SOLE-AIR-MANIFOLD 1/16" x 1/16" x 1/16"	
49	1	K-033353	REGULATOR-AIR 1/16" x 1/16" x 1/16"	B-040878
48	1	A-040883	HOLDER-SCROLL GAGE	
47	1	C-038080	BAR-LENGTN GAGE 31000"	
46	1	B-264218	HOLDER-AUX-ARMAT	
45	1	D-264216	GAGE-FRAME	
44	1	A-287186	NAMERPLATE-"LITTELL" Ø"	
43	1	A-284139	KNOB-HAND 7/8 BORE	
42	2	B-287196	BAR-CLAMPING	
41	1	K-204715	MONO-SWITCH-120V/150V 50/60HZ	
40	1	K-264816	COUNTDOWN-SWITCH 1/16" x 1/16" x 1/16"	
39	1	B-251755	BRACKET-MOTOR	
38	1	K-238283	DRIVE-GEAR 1/16" x 1/16" x 1/16"	
37	1	K-264716	GUARD-COILWINDING 1/16" x 1/16" x 1/16"	
36	1	K-248232	GUARD-COILWINDING 1/16" x 1/16" x 1/16"	
35	1	A-287192	NUT-CLAMP	D-143025
34	1	K-264217	GEAR-RIGHT-ANGLE 20W/40A/21"	
33	3	K-238285	COILWINDING "BOW" SCC 7/8 x 7/8"	
32	1	A-287185	NUT-ADJUSTING	
31	1	B-264219	SCREW-ADJUSTING 100-12 TWO	
30	1	K-082567	BUSHING-DIAPHRAGM 4"	
29	1	A-287190	BLOCK-BUSHING	
28	1	K-082921	SHART-DRIVE 7500 RPM 1/16" x 1/16" x 1/16"	D-082176
27	1	B-287195	BRACKET-SURFACE-DRIVER	
26	1	A-084770	BLOCK-LOCATOR-80"	
25	1	A-110180	BLOCK-LOCATOR-30"	A-040878
24	2	A-040885	BLOCK-SHEET-SUPPORT	
23	1	B-261580	BLOCK-GAGE	
22	1	B-287193	BRACKET-NUT-ADJUSTING	
21	2	B-287194	CLIM-BRACKET	
20	1	A-287188	PLATE-MOUNTING-ANGLE-DRIVE	
19	1	C-033345	GUARD-INDICATOR	
18	1	A-098446	ENCLOSURE-INDICATOR-BLOCK	
17	1	A-264138	ARM-AIR-CYLINDER-80"	
16	6	K-258326	INDICATOR-"MUTUAL-INDICATOR"	B-040878
15	6	K-264579	PIN-"STANDARD" 1/16" x 1/16" x 1/16"	B-040878
14	1	C-287199	PLATE-SURFACE-RIGHT	
13	4	K-038286	BLOCK-PISTON 1/16" x 1/16" x 1/16"	
12	1	C-287197	TABLE-SHEET-SUPPORT	
11	6	C-266630	BRACKET-INDICATOR-VARER	
10	8	A-264504	FORK-AIR-CYLINDER-TOP	
9	1	C-287197	PLATE-SURFACE-LEFT	
8	1	B-287194	PLATE-MOUNTING-REDUCER	
7	6	K-038708	CYLINDER-AIR 7/8" x 1/16" x 1/16"	
6	3	C-266668	BRACKET-INDICATOR-80"	
5	10	K-288804	NUT-TEE SLOT 1/16" x 1/16" x 1/16"	
4	2	C-289327	SHART-BALL-BUSHING	
3	4	C-289326	SUPPORT-SHART-BOLT	
2	1	K-288803	ENCORE	
1	1	D-264203	FRAME-MOUNTING	

D-264200	
DATE	REV

SCALE: 25:1 (1:1)
 SHEET 1 OF 2